

## Activity Document III

### PROJECT ABSTRACT

**Title** Exploratory assessment on the population distribution and potential uses of Non-*Gonystylus bancanus* species in Indonesia.

#### Summary

Since 2001, all species of *Gonystylus* have been listed in Appendix III of CITES and in 2004, they were transferred to Appendix II. According to their ecological distribution, some species of *Gonystylus* grow naturally in Indonesia. Only one of them - *G. bancanus* grows naturally in peat swamp forest and the others grow in lowland and even in hill forest area. Since the inclusion of *Gonystylus* species to the CITES Appendix, there have not been any exploration and review on their current status of distribution, population and their potential uses for timber, except for *G. bancanus*. Herbarium specimen and ecological data of *Gonystylus* species indicate approximately 6 woody species of *Gonystylus* growing naturally in Indonesia. In trade, these species are speculated to be grouped into Mixed Light Hardwood (MLH) and therefore their trade figures and volume are not recorded and recognized. This project aims to explore the non-*G. bancanus* species in Indonesia as a complement to the current ITTO project PD 426/06 Rev.1 (F). The overall objective is to contribute to the conservation of ramin species, while the specific objective is to explore the current status of *Gonystylus* species (non-*G. bancanus*) in Indonesia. The expected outputs are (i) state-of-the-art review on *Gonystylus* species other than *G. bancanus*, and (ii) the current growing stock, population distribution and habitats of non-*G. bancanus* species.

#### Executing/Implementing Agency

Center for Forest and Nature Conservation Research and Development (CFNCRD),  
Forestry Research and Development Agency (FORDA), Ministry of Forestry,  
Jalan Gunung Batu No. 5, Bogor, INDONESIA.  
Telp./Fax: 0251-633-234, 0251-638-111.

**Duration** 12 months.

**Starting date** Upon receiving funding for the project.

<b>Budget</b>	ITTO	US\$ 128,600
	GOI (in-kind contribution)	US\$ 33,090
	<b>Grand Total</b>	<b>US\$ 161,690</b>

This activity is submitted to ITTO for consideration under its Work Program activity "Ensuring international trade in CITES-listed timber species is consistent with their sustainable management and conservation," with primary funding provided by the European Commission and additional support from the USA, Japan, New Zealand and Norway.

## PART I. CONTEXT

### Origin/Background

The project is as an addition to the current project of ITTO PD 426/06 Rev.1 (F) – *The Prevention of Further Loss and the Promotion of Rehabilitation and Plantation of Gonystylus spp. (Ramin) in Sumatra and Kalimantan*. This project is being implemented by the Forestry Research and Development Agency (FORDA), Ministry of Forestry Indonesia and focuses only on one species of *Gonystylus*, namely *Gonystylus bancanus*. In fact, *G. bancanus* is the only species which has been widely explored and utilized as a source of timber in Indonesia. As ramin has been listed in the CITES Appendix which includes all species within the genus *Gonystylus*, the information on the current status of ramin other than *G. bancanus* is also important in order to strengthen the conservation and management of all the species within the genus. It is suspected that so far the other species of ramin are mixed in the Mixed Light Hardwood (MLH) in domestic and international trade. There has not been any observation and detail study on the inclusion of ramin other than *G. bancanus* in the MLH. Several species of *Gonystylus* have been recorded to be growing naturally in the lowland and highland forests in Indonesia with some of them growing as woody plants or large trees.

## PART II. THE PROJECT

### 1. Project Objective

The objective of this project is to explore and obtain information on the current status of *Gonystylus* species (non-*G. bancanus*) in Indonesia, which specific reference to their growing stock, population distribution and habitats. The habitats are Sumatra, Java, Kalimantan and Sulawesi and may include Irian Jaya. This information will be obtained through literature review, workshop and field exploration in the representative areas.

### 2. Justification

#### 2.1. Problems to be Addressed

Ramin (*Gonystylus* species) as a genus has been listed in CITES Appendix III since 2001 and then transferred to Appendix II in October 2004 at COP 13 in Bangkok, Thailand and became effective in 2005. According to several authors (Airy Shaw 1972, Soerianegara and Lemmens 1994, Sidiyasa *et al* 2005) and official figures from CITES, the number of species within the genus *Gonystylus* is approximately 30 and even more depending on the author's interpretation on the species (Table 1). The number of those species recorded growing naturally in Indonesia is 10 with some of them growing as woody plants or large trees. Among these species, only one species, *G. bancanus*, has been widely explored and exploited as a timber source. The remaining species are not clear with regard to their status of population, growing stock and distribution. This also indicates the unclear status of their conservation as well as utilization.

Current efforts to carry out review and field exploration on these species are still insignificant. This issue was raised in the workshop during the ITTO pre-project PPD 87/03 Rev.2 (F) – *Identification of Gonystylus spp. (Ramin), Potency, Distribution, Conservation and Plantation*

*Barrier* and was recognized as a necessary part for future conservation and management of ramin. However, this issue has not been incorporated into the current ITTO

project PD 426/06 Rev.1 (F) – *The Prevention of Further Loss and the Promotion of Rehabilitation and Plantation of Gonystylus spp. (Ramin) in Sumatra and Kalimantan* that is being carried out by FORDA.

What will happen if no project intervention? The status of the species other than *G. bancanus* will remain unclear and even may face serious threat with the presence of various disturbances in their natural habitats, such as illegal logging, forest fires, forest encroachment and conversion of forests to other uses.

## 2.2. Intended Situation after Project Completion

Expected situation after project completion is the reversal of the current situation, such as, the availability of information regarding population distribution, habitats and growing stocks, as well as information on the potential use of *Gonystylus* species, especially the non-*G. bancanus* species, for future development. The information obtained from this project would also include the bibliography of each species, biological description, ecology and habitat along its geographical and ecological range. This information is currently not available, even though these species as a genus have been listed in the CITES Appendix since 2001.

By obtaining this important information, the status of each species will be clear and appropriate treatment for each species for conservation and utilization could be formulated at national and international level. In addition, by obtaining sufficient scientific information for each species, the decision to include all species in the CITES Appendix will receive stronger justification from both scientific and technical aspects.

Table 1. List of species within the genus *Gonystylus* (Airy Shaw 1972, Sidiyasa *et al* 2005)

No.	Species Name	Size of plants/height	Distribution	Potential value
1	<i>G. augescens</i>	Small tree	Borneo	Unknown
2	<i>G. ariolatus</i>	Shrub/small tree	Malaysia	Unknown
3	<i>G. calphtylus</i>	Shrub/small tree	Malesia (Borneo)	Unknown
4	<i>G. reticulatus</i>	Shrub/small tree	Philippines (Mindanau)	Unknown
5	<i>G. macrophyllus</i>	Tree, up to 45 m	Nicobar Island (Kamorta), Malaysia	Wood for small boxes
6	<i>G. xylocarpus</i>	Tree, up to 36 m,	Borneo Malaysia and Indonesia	Timber for furniture
7	<i>G. stenosephalus</i>	Small tree	Borneo (Sarawak)	Unknown
8	<i>G. borneensis</i>	Shrub/small tree	Borneo	Unknown
9	<i>G. keithii</i>	Shrub/small tree	Borneo	Fish poison
10	<i>G. brunnescens</i>	Tree, 13-18 m	Peninsular Malaysia, Borneo	Used as ramin timber
11	<i>G. acumminatus</i>	Tree, up to 25 m	Borneo, Peninsular Malaysia, Sumatra	Unknown
12	<i>G. confusus</i>	Tree, 15-30 m	Peninsular Malaysia, Sumatra	Used as ramin timber
13	<i>G. affinis</i> Syn: <i>G. beccarianus</i>	Tree, 9-24 m	Peninsular Malaysia, Borneo	House construction

14	<i>G. forbesi</i>	Tree, 20-40 m	Sumatra, Borneo	Wood
15	<i>G. velutinus</i>	Tree, 23-35 m	Sumatra, Bangka, Belitung, Borneo	Timber, furniture
16	<i>G. maingayi</i>	Tree, up to 27 m	Peninsular Malaysia, Sumatra	Wood
17	<i>G. pendulus</i>	Small tree	Borneo	Unknown
18	<i>G. micranthus</i>	Tree, up to 18 m	Borneo	Timber
19	<i>G. bancanus</i>	Tree, 18-42 m	Peninsular Malaysia, Sumatra, Borneo	Timber/wood/general light construction

### 2.3. Target Beneficiaries

The benefit of the project is the production of important information regarding the species within the genus *Gonystylus* other than *G. bancanus*, such as information on the growing stock, population distribution and specific habitat for each species. This information could be in the form of technical reports, workshop proceedings and other materials.

The primary beneficiaries of the project are CITES Management Authority, CITES Scientific Authority, research institutions, universities, companies and local communities. The benefits will be disseminated and delivered through project publications, workshops, consultative meetings and other related public events organized by the Ministry of Forestry (MoF), as well as other institutions.

### 2.4. Risks

The project activities will have minimal risks since the major activities are mostly carried out through *literature search*, workshops and field exploration (survey) in selected areas. For the field survey, the unpredictable weather may influence the schedule but will not cause a complete failure in the achievement of the overall project objective.

## 3. Outputs

The objective of the project is to explore and obtain the current status of *Gonystylus* species (non-*G. bancanus*) in Indonesia.

The expected outputs of the project are:

Output 1.1. State-of-the-Art-Review on *Gonystylus* species other than *G. bancanus*.

Output 1.2. The current growing stock, population distribution and habitats of non-*G. bancanus* species.

## 4. Activities

Output 1.1. State-of-the-Art-Review on *Gonystylus* species other than *G. bancanus*.

Activity 1.1.1. To carry out a literature review on *Gonystylus* species other than *G. bancanus*.

This activity includes collecting all printed and unprinted materials ('grey literature') regarding the species from the libraries in Bogor and Jakarta and making communication to institutions located in naturally occurring ramin areas, such as in Sumatra, Java, Kalimantan and

Sulawesi. This may also include Irian Jaya. This information will be compiled and written into a draft of review for further discussion in a workshop.

Activity 1.1.2. To carry out a workshop on the availability of information.

The aim of the workshop is to discuss the findings of the literature search (state-of-the-art-review) and to narrow down the target species for further exploration. This workshop will also explore the most suitable sites for field survey and determine the methodology of survey.

Output 1.2. The current growing stock, population distribution and habitats of non-*G. bancanus* species.

Activity 1.2.1. To carry out a field survey of the target species at the chosen sites.

Based on the identification during the workshop of Activity 1.1.2, a field survey involving experts (taxonomists and ecologists) will be carried out in the representative areas in those islands as described earlier.

Activity 1.2.2 To carry out a workshop on follow-up actions.

The aim of this workshop is to discuss the findings of the field survey and to draw up a list of recommended actions for species conservation and utilization.

## 5. Work Plan

Outputs and Activities	Responsible Party	Schedule (in months)											
		1	2	3	4	5	6	7	8	9	10	11	12
<b>Output 1.1. State-of-the-Art-Review on <i>Gonystylus</i> species other than <i>G. bancanus</i></b>	CFNCRD*												
Activity 1.1.1. To carry out a literature review on <i>Gonystylus</i> species other than <i>G. bancanus</i>	CFNCRD												
Activity 1.1.2. To carry out a workshop on the availability of information	CFNCRD												
<b>Output 1.2. The current growing stock, population distribution and habitats of non-<i>G. bancanus</i> species</b>	CFNCRD												
Activity 1.2.1. To carry out a field survey of the target species at the chosen sites	CFNCRD												
Activity 1.2.2. To carry out a workshop on follow-up actions	CFNCRD												

Note: \*CFNCRD-Center for Forest and Nature Conservation Research and Development.

## 6. Budget

### Worksheet and Budget Components

Outputs and Activities	Inputs			Unit Cost	Quarter Year	Budget Component	Total	
	Units and quality	No					ITTO	(GOI)
		ITTO	GOI					
<b>Output 1.1. State-of-the-Art-Review on <i>Gonystylus</i> species other than <i>G. bancanus</i></b>								
Activity 1.1.1. To carry out a literature review on <i>Gonystylus</i> species other than <i>G. bancanus</i>	1). MD Other labors	10	0	15	Q1 - Q2	13	150	-
	2). Return Tickets	2	0	300		32	600	-
	3). Local Transport	2	0	50		33	100	-
	4). Days-Daily Sub-Allowance	20	0	60		31	1,200	-
	5). Capital equipment (computer notebook)	1	0	1500		43	1,500	-
	6). Office Supplies	5	0	100		53	500	-
	7). Materials	10	0	100		51	1,000	-
	8). Fuel and Utilities	2	0	250		52	500	-
	9). Other consumable items	1	0	500		54	500	-
	10). Sundry	1	0	500		61	500	-
	11). Other miscellaneous	1	0	500		64	500	-
<b>Sub total Activity 1.1.1.</b>							<b>7,050</b>	-
Activity 1.1.2. To carry out a workshop on the availability of information	1). Speakers	2	0	100	Q2	12	200	-
	2). Other labors	10	0	15		13	150	-
	3). Return ticket for participants	10	0	150		32	1,500	-
	4). Local transport	15	0	25		33	375	-
	5). Office Supplies	2	0	100		53	200	-
	6). Printing materials	1	0	750		62	750	-
	7). Workshop package	1	0	2000		63	2,000	-
<b>Sub total Activity 1.1.2</b>							<b>5,175</b>	-
<b>Sub Total Output 1.1.</b>							<b>12,225</b>	-
<b>Output 1.2. The current growing stock, population distribution and habitats of non-<i>G. bancanus</i> species</b>								
Activity 1.2.1. To carry out a field survey of the target species at the chosen sites	1). MM National Expert <sup>†</sup>	6	0	1,500	Q2 - Q4	11	9,000	-
	3). MD Other labors <sup>1</sup>	900	0	15		13	13,500	-
	4). Return Tickets	60	0	300		32	18,000	-
	5). Local Transport	20	0	200		33	4,000	-
	6). Days-Daily Sub-Allowance <sup>2</sup>	600	0	60		31	36,000	-
	7). Office Supplies	5	0	100		53	500	-
	8). Materials	10	0	300		51	3,000	-
	9). Fuel and Utilities	2	0	300		52	600	-
	10). Other consumable items	3	0	500		54	1,500	-
	11). Sundry	3	0	500		61	1,500	-
	12). Other Miscellaneous	3	0	500		64	1,500	-
<b>Sub total Activity 1.2.1</b>								<b>89,100</b>

Outputs and Activities	Inputs			Unit Cost	Quarter Year	Budget Component	Total	
	Units and quality	No					ITTO	(GOI)
		ITTO	GOI					
Activity 1.2.2. To carry out a workshop on follow-up actions	1). Speakers	6	0	100	Q4	12	600	-
	2). Other labors	10	0	15		13	150	-
	3). Return ticket for participants	10	0	150		32	1,500	-
	4). Local transport	15	0	25		33	375	-
	5). Office Supplies	2	0	100		53	200	-
	6). Printing materials	1	0	750		62	750	-
	7). Workshop package	1	0	2000		63	2,000	-
<b>Sub total Activity 1.2.2</b>						<b>5,575</b>	-	
<b>Sub Total Output 1.2</b>						<b>94,675</b>	-	
<b>Non-activity Based Expenses</b>								
	1). MM Project coordinator	0	0	0	Q1 - Q4	14	0	-
	2). MM Project Secretary	0	0	0		15	0	-
	3). MM Team Leader <sup>+</sup>	12	0	500		16	6,000	-
	4). Daily Subsistence allowance	10	0	60		31	600	-
	5). Return Ticket	2	0	300		32	600	-
	6). Local Transport	10	0	50		33	500	-
	7). Office space	0	1	10,000		41	0	10,000
	8). Operational Vehicles	0	1	2,000		42	0	2,000
	9). Fuels and utilities	1	0	1,000		52	1,000	-
	10). Office supplies	1	0	500		53	500	-
	11). Other consumable items	1	0	500		54	500	-
	12). Sundry	2	0	500		61	1,000	-
	13). Printing reports and editing <sup>3</sup>	3	0	3,500		62	10,500	-
	14). Other miscellaneous	1	0	500		64	500	-
<b>Sub total Non-activity Based Expenses</b>						<b>21,700</b>	<b>12,000</b>	
<b>Total Budget</b>						<b>128,600</b>	<b>12,000</b>	

Note: <sup>+</sup>Refer to **Annex 1** for the Terms of Reference.

## Overall Project Budget by Activity

Outputs and Activities	Budget Components														
	10. Project Personnel		20. Sub-contract		30 Duty Travel		40. Capital Items		50. Consumable Items		60. Miscellaneous		Quarter Year	Grand Total	
	ITTO	GOI	ITTO	GOI	ITTO	GOI	ITTO	GOI	ITTO	GOI	ITTO	GOI		ITTO	GOI
<b>Output 1.1. State-of-the-Art-Review on <i>Gonystylus</i> species other than <i>G. bancanus</i></b>															
Activity 1.1.1. To carry out a literature review on <i>Gonystylus</i> species other than <i>G. bancanus</i>	150	-	-	-	1,900	-	1,500	-	2,500	-	1,000	-	Q1 - Q2	7,050	-
Activity 1.1.2. To carry out a workshop on the availability of information	350	-	-	-	1,875	-	-	-	200	-	2,750	-	Q2	5,175	-
<b>Sub total</b>	<b>500</b>	-	-	-	<b>3,775</b>	-	<b>1,500</b>	-	<b>2,700</b>	-	<b>3,750</b>	-		<b>12,225</b>	-
<b>Output 1.2. The current growing stock, population distribution and habitats of non-<i>G. bancanus</i> species</b>															
Activity 1.2.1. To carry out a field survey of the target species at the chosen sites	22,500	-	-	-	58,000	-	-	-	5,600	-	3,000	-	Q2 - Q4	89,100	-
Activity 1.2.2. To carry out a workshop on follow-up actions	750	-	-	-	1,875	-	-	-	200	-	2,750	-	Q4	5,575	-
<b>Sub total</b>	<b>23,250</b>	-	-	-	<b>59,875</b>	-	-	-	<b>5,800</b>	-	<b>5,750</b>	-		<b>94,675</b>	-
<b>Non-activity Based Expenses</b>															
Activity Coordination	6,000	-	-	-	1,700	-	-	12,000	2,000	-	12,000	-	Q1 - Q4	21,700	12,000
<b>Sub total Non-activity Based Expenses</b>	<b>6,000</b>	-	-	-	<b>1,700</b>	-	-	<b>12,000</b>	<b>2,000</b>	-	<b>12,000</b>	-		<b>21,700</b>	<b>12,000</b>
<b>GRAND TOTAL</b>	<b>29,750</b>	-	-	-	<b>83,350</b>	-	<b>1,500</b>	<b>27,000</b>	<b>10,500</b>	-	<b>21,500</b>	-	-	<b>128,600</b>	<b>12,000</b>



**Total Project Budget**

Budget Components		ITTO	GOI	Total
<b>10. Project Personnel</b>				
	11. National Expert	9,000	-	9,000
	12. Speakers	800	-	800
	13. Other labors	13,950	-	13,950
	14. Project coordinator	-	-	-
	15. Project Secretary	-	-	-
	16. Team Leader	6,000	-	6,000
	<b>19. Component Total</b>	<b>29,750</b>	-	<b>29,750</b>
<b>20. Sub-contract</b>				
	21. Sub-contract	-	-	-
	<b>29. Component Total</b>	-	-	-
<b>30. Duty Travel</b>				
	31. DSA	37,800	-	37,800
	32. Return Ticket	22,200	-	22,200
	33. Local transport	5,350	-	5,350
	<b>39. Component Total</b>	<b>65,350</b>	-	<b>65,350</b>
<b>40. Capital Items</b>				
	41. Office Space	-	10,000	10,000
	42. Vehicles	-	2,000	2,000
	43. Capital equipment (computer notebook)	1,500	-	1,500
	<b>49. Component Total</b>	<b>1,500</b>	<b>12,000</b>	<b>13,500</b>
<b>50. Consumable Items</b>				
	51. Materials	4,000	-	4,000
	52. Fuels and utilities	2,100	-	2,100
	53. Office Supplies	1,900	-	1,900
	54. Other consumable items	2,500	-	2,500
	<b>55. Component Total</b>	<b>10,500</b>	-	<b>10,500</b>
<b>60. Miscellaneous</b>				
	61. Sundry	3,000	-	3,000
	62. Printing and editing	12,000	-	12,000
	63. Workshop package	4,000	-	4,000
	64. Other miscellaneous	2,500	-	2,500
	<b>69. Component Total</b>	<b>21,500</b>	-	<b>21,500</b>
<b>Total Budget by Component</b>		<b>146,600</b>	<b>12,000</b>	<b>140,600</b>
<b>70. Executing Agency Management</b>				
	Executing Agency Management costs (15% of Total of Overall Project Budget by Activity)	-	21,090	21,090
	<b>79. Component Total</b>	-	<b>21,090</b>	<b>21,090</b>
<b>Grand Total</b>		<b>128,600</b>	<b>33,090</b>	<b>161,690</b>

### Project Budget by Source

Budget Components	Source		Total
	ITTO	GOI (in-kind)	
10. Project Personnel	29,750	-	29,750
20. Sub-contract	-	-	-
30. Duty travel	65,350	-	65,350
40. Capital Items	1,500	12,000	13,500
50. Consumable Items	10,500	-	10,500
60. Miscellaneous	22,500	-	22,500
70. Executing agency Management Cost	-	21,090	20,090
<b>Total</b>	<b>128,600</b>	<b>33,090</b>	<b>161,690</b>

## PART III. OPERATIONAL ARRANGEMENTS

### 1. Management Structure

This project is treated as complementary to the existing ITTO Project PD 426/06 Rev. 1 (F) and therefore the Management Structure of this project is similar to that project except for the use of a Technical Advisory Committee (instead of a Project Steering Committee), Team leader and members of the field team. The Technical Advisory Committee (TAC) consists of representatives from four (4) agencies, namely, (i) Center for Forest and Nature Conservation Research and Development, (ii) Center for Forest Plantation Research and Development, (iii) Directorate of Biodiversity Conservation, and (iv) Division of Research Cooperation and Information (FORDA). The Project Coordinator, Project Secretary/Finance and members of the field team are as follows:

Technical Advisory Committee : As listed above (4 members)  
Project Coordinator (PC) : PC PD426/06 Rev.1 (Ir. Tajudin Edy Komar, MSc.)\*\*  
Project Secretary/Finance (PS/F) : PS/F PD426/06 Rev.1 (Siti Nurjanah, SP. MP)\*\*

Members of the Field Team

Team Leader

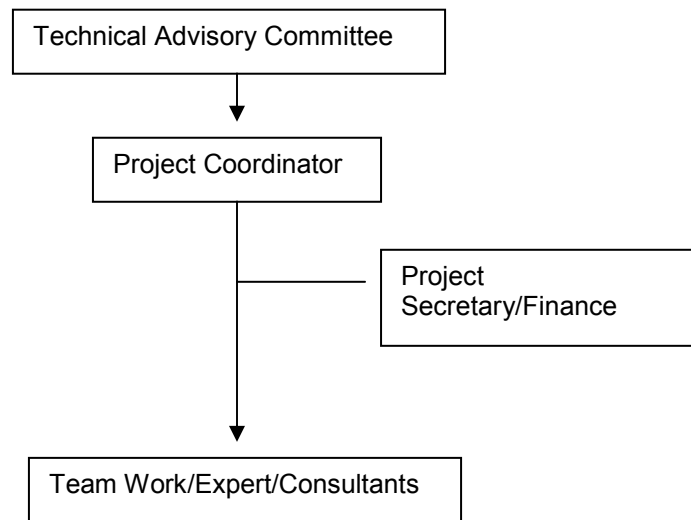
Dr. Kade Sidiyasa (FORDA)

Members

- (i) Dra. Marfuah Wardhani, MP
- (ii) Dra. Titi Kalima, MSi.
- (iii) Ir. Bugris Yafid, M.Sc
- (iv) Ir. Listya Mustika Dewi
- (v) Ir. Dian Tita Rosita

Note: \*\*No monthly salary provided for PC and PS/F since this project is treated as a complement to the existing project. Salaries for PC and PS/F have been provided for in the existing project.

Figure 1. Organization Chart



## 2. Monitoring, Reporting and Evaluation

### (i) Monthly Project Progress Reports

The monthly project progress report will be prepared based on the achievement of project activities/outputs as described in the Work Plan.

### (ii) Project Technical Reports

- (a) State-of-the-Art-Review on the *Gonystylus* species (non-*G. bancanus*) will be prepared, edited and published as a technical document.
- (b) Current growing stock, population distribution and habitats (survey results) will be prepared, edited and published as a technical document.

### (iii) A Project Completion Report

This report, containing summary of technical reports, findings and lessons learned, as well as general recommendations, will be submitted within two months of the project completion.

**TERMS OF REFERENCE (TOR)**

**1. National Expert**

Position: National Experts who will be assigned should have expertise and have been working at least 2 years on forest botany, taxonomy and ecology.

Responsibilities: The expert(s) will be responsible to carry out activities assigned (Activity 1.2.1), with agreed team work and or collaborative institution. Detail work description is provided based on each activity (assignment). The expert(s) prepares one technical report in accordance with the activity concerned. The submission of the technical report, final draft of technical report is within the period of assignment based on agreement normally within 2 months. The technical report must be presented in the meeting held by the project or concurrently with other meetings.

Qualification, time and payment: Hold at least a Master degree with 2-3 years experience as described above, good understanding in English both oral and written. Expert will carry out activity concerned within time allocated by the project (1 – 4 months). Rate of payment is in accordance with the budget allocated as appear in the Budget Worksheet and the experience of the expert.

**2. Team Leader**

A Team Leader will be hired to lead operational activities under this project. The hiring is based either on individual activity or a set of activities in the project. The team leader will be determined and assigned by Project Coordinator PD 426/06 Rev.1 (F), as this project is considered as Complimentary to project PD 426/06 Rev.1 (F), and based on his qualification, time availability and the recommendation (approval) of the Technical Advisory Committee.

Responsibilities: Lead operational field activities as assigned and work closely with parties and personnel involved in the project team, and responsible to Project Coordinator as above and prepare progress and final technical reports under the direction of the Project Coordinator.

The Team Leader and members of the team, along with their CVs, will be decided and included into Inception Report/Work Plan of the Project. If necessary, the name of Team Leader will be forwarded to ITTO for obtaining the 'No Objection Letter' (NOL). Nominated team leader and its members have been proposed in the section on Management Structure.

**3. Project Coordinator and Project Secretary**

Project Coordinator and Project Secretary are as in ITTO PD 426/6 Rev.1 (F). This is to ensure that small projects under ITTO-CITES are as an integral part to the current ITTO Project on ramin in Indonesia (see Management Structure).

## ENDNOTE

---

<sup>1</sup> 15 locations distributed in Sumatra, Java, Kalimantan, Sulawesi and Papua. Hence, 15 locations x 6 laborers x 10 days = 900 mandays.

<sup>2</sup> 15 locations x 2 researchers x 10 days + 15 locations x 2 technicians x 10 days = 600 mandays.

<sup>3</sup> Expect to publish all obtained information from field survey, seminars and workshops and distribute them to the target beneficiaries, and at least 3 good quality reports will be printed.