



## How to Use the CITES Cheetah Trade Resource Kit

<b>The aim of the kit</b>	To provide information and tools to assist Parties to the Convention on International Trade in Endangered Species of Wild Fauna and Flora in implementing the Convention with regard to trade in cheetahs
<b>What does it do?</b>	It provides guidelines for the management of cheetahs and/or cheetah specimens that have been seized or confiscated from the illegal wildlife trade, covering from the moment a specimen is discovered through to long-term management.
<b>Why was it developed?</b>	<i>The need for this document was identified at the 17<sup>th</sup> meeting of the Conference of the Parties to CITES, where Decision 17.124 was adopted, directing the Secretariat to “commission the development of a CITES cheetah trade resource kit that compiles relevant information and tools to assist in implementing the Convention with regard to trade in cheetahs, and addresses inter alia: identification of live cheetahs and parts and derivatives thereof; advice on procedures to be followed in case of seizures including handling, DNA sampling, guidance on the immediate and long-term disposal of live animals (e.g. decision trees based on relevant CITES Resolutions, veterinary care, contact details of experts or potential rescue centres, advice on procedures, reporting on disposal activities); and lists of suitable housing facilities for long-term placement of live cheetahs; and other relevant materials.”</i>
<b>How does it work?</b>	<p>This resource kit is designed to provide a user-friendly step-by-step guide for anyone who may be involved in the seizure or confiscation of live cheetahs and/or cheetah specimens.</p> <p>The resource kit is divided into sections, and the flowcharts on the following pages can be used to help determine what steps need to be taken, and which sections of the resource kit are likely to be most helpful at any given point during a seizure.</p>

The information in the resource kit is designed to ensure that cheetahs are accurately identified, and cared for appropriately, in order to give them the best chance of long-term survival and a good quality of life.

The information given in the resource kit is enough to ensure a good standard of care for seized and confiscated cheetahs, however it is not exhaustive and so references to sources are provided for readers that may wish to have access to additional information.

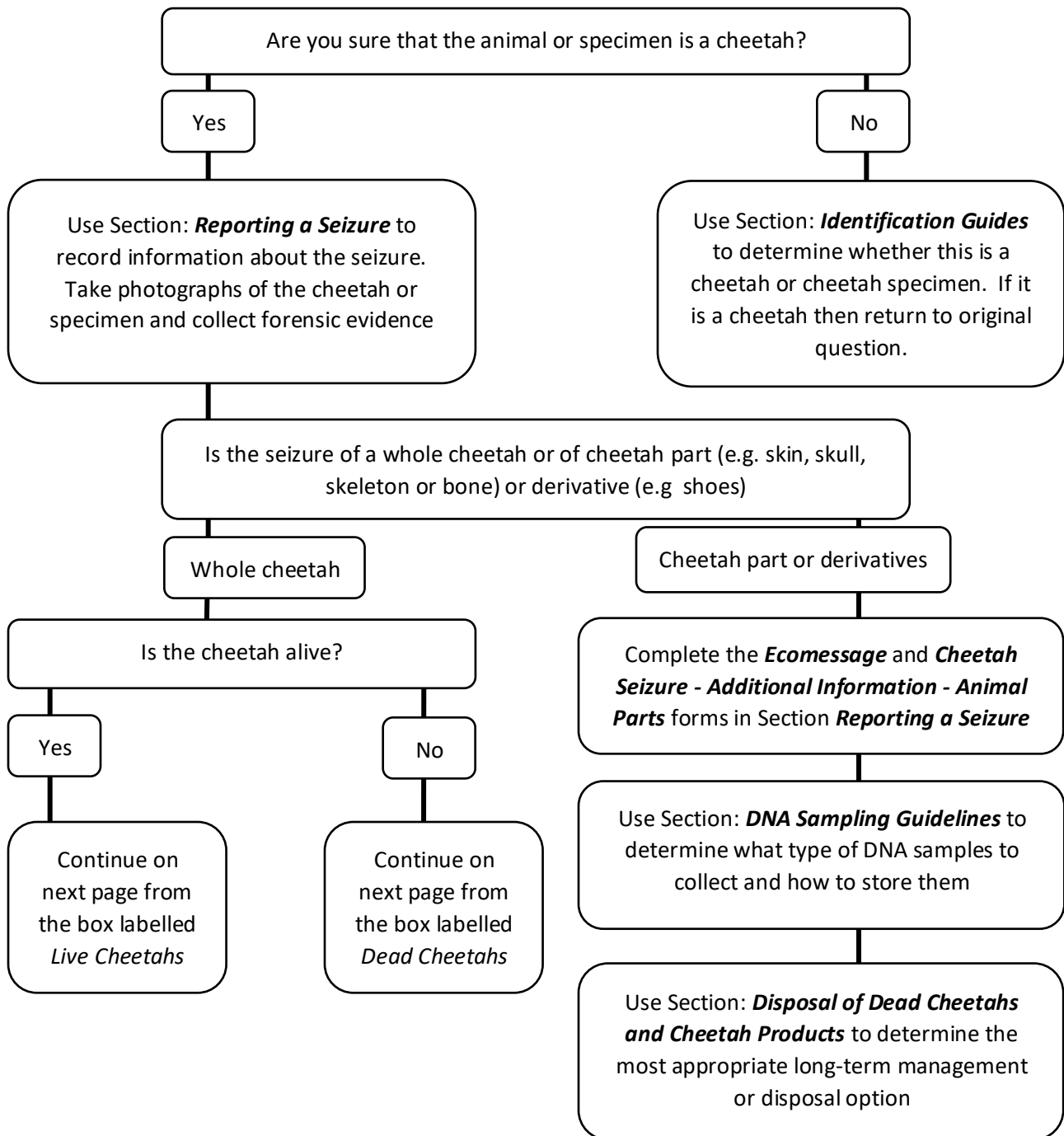
**These guidelines focus on how to care for cheetahs, however much of the information also applicable to other mammal species that have been confiscated from the illegal wildlife trade.**

## Where can I find the information I need?

Use the flow chart on the following page to help you navigate the resource kit

The table below also gives a brief summary of what can be found in the different sections

<b>CORE INFORMATION</b>	
<b>Identification Guides</b>	<p>This section has detailed identification guides for both live cheetahs and cheetah specimens.</p> <p>These include identification keys and distinctive features of the species as well as comparisons with other cat species and specimens which could be confused with cheetahs.</p>
<b>Reporting a Seizure</b>	<p>This section contains guidance on the procedures that should be followed during and after a seizure.</p> <p>This includes when to make a seizure, maintaining the integrity of the evidence and how to report the seizure to relevant authorities.</p>
<b>First Response Care Guide for Seized Live Cheetahs</b>	<p>This section gives guidance on initial care for cheetahs during and after seizures.</p> <p>It includes basic healthcare information and first aid treatments, as well as temporary housing requirements and dietary information.</p>
<b>Long-Term Captive Care and Management Guide</b>	<p>This section gives guidance on long term care for cheetahs.</p> <p>It includes information on the long-term captive management of cheetahs; including enclosure design, quarantine and long-term management.</p>
<b>DNA Sampling Guidelines</b>	<p>This section includes information about how to sample a variety of different sources of DNA and how to store the samples to ensure the highest likelihood of extracting high quality DNA.</p>
<b>Disposal of Dead Cheetahs and Cheetah Products</b>	<p>This section provides guidance on how to dispose of dead cheetahs and seized cheetah products.</p>
<b>Veterinary Care</b>	<p>This section gives information about providing veterinary care for cheetahs, including common health problems, anaesthesia and antiparasitics.</p>
<b>Resources and National Carnivore Coordinators</b>	<p>This section gives information on how to contact cheetah experts for further help and information.</p>
<b>Glossary</b>	<p>This section explains what the technical words used in the Resource Kit mean. Technical language has been avoided wherever possible, but the glossary explains the less common words and phrases used.</p>
<b>ADDITIONAL INFORMATION</b>	
<b>Background Information</b>	<p>Background information on the cheetah as a species, how it is threatened by the illegal wildlife trade, and how international trade is regulated under CITES.</p>
<b>Cheetah Necropsy Guidelines</b>	<p>Information on how to perform a basic necropsy to help determine cause of death.</p>



## Live Cheetahs

Complete the *Ecomessage* and *Cheetah Seizure - Additional Information - Whole Animal* forms in Section: *Reporting a Seizure*

Use Section: *First Response Care Guide for Seized Live Cheetahs* to ensure the cheetah's immediate needs are met. Pay particular attention to Subsections: **1. First Response**; **2. Healthcare Checklist** and **3: Common Health Issues and First Aid Treatments**

Use Section: *DNA Sampling Guidelines* to determine what type of DNA samples to collect and how to store them

Refer to Section: *Resources and National Carnivore Coordinators* who may be able to help with the long-term management decisions for the cheetah

Use Section: *Long-Term Captive Care and Management Guide* to inform how the cheetah is housed and cared for.

---

## Dead Cheetahs

Complete the *Ecomessage* and *Cheetah Seizure - Additional Information - Whole Animal* forms in Section: *Reporting a Seizure*

Use Section: *DNA Sampling Guidelines* to determine what type of DNA samples to collect and how to store them

If possible, use the *Cheetah Necropsy Guidelines* in Section *Reporting a Seizure* to help determine cause of death

Use Section: *Disposal of Dead Cheetahs and Cheetah Products* to determine the most appropriate long-term management or disposal option

© 2022 Secretariat of the Convention on International Trade in Endangered Species of Wild Fauna and Flora (CITES)

Prepared under contract from the CITES Secretariat by the Zoological Society of London in cooperation with the CITES Secretariat and the IUCN SSC Cat Specialist Group.

The CITES Cheetah Trade Resource Kit is freely available at [www.cites.org](http://www.cites.org). Users may download, reuse, reprint, distribute, copy text and data and translate the content, provided that the original source is credited and that the logo of CITES is not used.

The findings, interpretations, and conclusions expressed herein are those of the author(s) and do not necessarily reflect the views of the CITES Secretariat, the United Nations Environment Programme, United Nations or the Parties to the Convention.

The designations employed and the presentation of material on any map in this work do not imply the expression of any opinion whatsoever on the part of the CITES Secretariat, the United Nations Environment Programme or the United Nations concerning the legal status of any country, territory, city or area or of its authorities, or concerning the delimitation of its frontiers or boundaries.

Links contained in the present publication are provided for the convenience of the reader and are correct at the time of issue. The CITES Secretariat takes no responsibility for the continued accuracy of that information or for the content of any external website.

This resource kit has been commissioned by the CITES Secretariat with funding from Switzerland and the United States of America.

All photographs and pictures, except where otherwise indicated, are by Helen O'Neill

All photographs marked NHMUK feature specimens from the collections of the Natural History Museum, London

### ***Acknowledgements***

The Secretariat would like to thank the authors, Helen O'Neill and Sarah Durant, Zoological Society of London; the CITES Parties for reviewing the draft cheetah trade resource kit, and the following people and organisations for their help in the development of this kit: Nick Mitchell, Audrey Ipavec, Rosemary Groom, Dada Gottelli, Patricia Tricorache, Amanda Guthrie, Malcolm Fitzpatrick, Lisa Clifforde, Lewis Rowden, Mark Holden, Christian Plowman, Matthew Collis, Sarah Davies, Matt Becker, Colleen McCann, Pat Thomas, Shira Yashphe, Anahi Hidalgo, Becky Johnston; Cheetah Conservation Fund; The Natural History Museum, London; the Association of Zoos and Aquariums; European Association of Zoos and Aquaria; and the Wildlife Conservation Society.

### ***Author affiliations***

Helen O'Neill, Institute of Zoology, Zoological Society of London

Sarah Durant, Institute of Zoology, Zoological Society of London