

A STRATEGIC FRAMEWORK FOR AN AFRICAN ELEPHANT ACTION PLAN 2009

Compiled by:
IUCN Species Survival Commission
African Elephant Specialist Group
Nairobi, Kenya

EXECUTIVE SUMMARY

This Strategic Framework for an *African elephant action plan* is the culmination of a collaborative development process facilitated by the IUCN/SSC African Elephant Specialist Group but 'owned' by the African elephant range States. Ultimately, the final *African elephant action plan* should be designed and implemented by the African elephant range States in their efforts to better conserve and manage Africa's elephants and their habitats.

This Strategic Framework provides an introduction to the current conservation status and key issues facing elephant conservation and management across the continent. Further, the Strategic Framework presents seven primary objectives that address the broad continent-wide issues facing African elephant conservation and management, within their socio-economic context. Specifically these objectives, as discussed under the umbrella heading of 'themes' at the CITES African elephant range States meeting in Mombasa, Kenya during June 2008, are to:

- **Improve knowledge and management of elephant populations and their habitats**
- **Reduce illegal killing of elephants and illegal trade in elephant products**
- **Maintain elephant habitats and restore connectivity**
- **Reduce human-elephant conflict**
- **Strengthen understanding and cooperation among range States**
- **Assess the costs and benefits of elephants to people**
- **Implement and monitor the African elephant action plan**

Two cross-cutting objectives were also identified and these pertain to each and every one of the seven primary objectives presented above.

- **Increase awareness on elephant conservation and management across all levels**
- **Build capacity in elephant conservation and management**

BACKGROUND

This Strategic Framework for an *African elephant action plan* is an outcome of discussions held at the African elephant range States dialogue meeting prior to and during the 14th meeting of the Conference of the Parties (CoP14), 2007, The Hague, Netherlands. The CITES decisions from these discussions are described in more detail below and provide a background to the development of this Strategic Framework, the process adopted and the future steps which will ultimately culminate in the development of an *African elephant action plan*.

At CoP14, Decisions 14.75 to 14.79 concerning elephant conservation were adopted as follows:

Directed to African elephant range States

14.75 The African elephant range States shall continue their constructive elephant dialogue aiming to develop joint conservation policies and exchange of management experience in order to improve the management of elephant populations.

The African elephant range States through the African elephant dialogue process shall develop an overall *African elephant action plan* for improved elephant management aiming at:

- a) accessing and directing resources, towards strengthening enforcement capacity in African elephant range States to combat poaching and illegal trade in ivory;
- b) the implementation of the *Action plan for the control of trade in elephant ivory*; and
- c) enhancing capacity building, managing translocations, reducing human-elephant conflicts and enhancing community-conservation programmes and development programmes within or adjacent to the elephant range.

The elephant range States will report to the Standing Committee on progress made under this decision with a view to providing the information necessary for the reviews referred to in Decision 14.78.

Directed to Parties, intergovernmental organizations and non-governmental organizations

14.76 Parties, trading countries, the ivory carving industry, intergovernmental organizations, non-governmental organizations and other donors are called upon to contribute significantly to the African Elephant Fund for the implementation of the *African elephant action plan* and the programme for Monitoring the Illegal Killing of Elephants (MIKE) to ensure their establishment and maintenance.

Directed to the Standing Committee

14.77 The Standing Committee, assisted by the Secretariat, shall propose for approval at the latest at the 16th meeting of the Conference of the Parties a decision-making mechanism for a process of trade in ivory under the auspices of the Conference of the Parties.

14.78 The Standing Committee shall conduct ongoing comprehensive reviews of the status of the elephant, trade in its specimens and the impact of the legal trade, based on data from MIKE, the Elephant Trade Information System and the implementation of the *Action plan*

for the control of trade in elephant ivory and the African elephant action plan referred to in Decision 14.75.

Directed to the Secretariat

14.79 The Secretariat shall establish an African Elephant Fund that will be applied to the implementation of the *African elephant action plan*.

The Secretariat shall establish a steering committee consisting of representatives of the range States and donors to govern the African Elephant Fund and to support and advise African elephant range States on the implementation of the Action Plan.

The Steering Committee shall decide on the organization of the administration of the fund.

The Secretariat shall, as far as possible through MIKE funding, convene an African elephant meeting before 31 July 2008 and at later dates as necessary.

The interconnected decisions from the CITES COP14 on the development of an *African elephant action plan* and the establishment of an accompanying African Elephant Fund are directed to the African elephant range States and the CITES Secretariat respectively. The two decisions are complementary and inextricably linked. The creation of the African Elephant Fund requires an understanding of and linkage to the prioritised activities requiring support through the development of an African elephant action plan, while the development of a meaningful *African elephant action plan* needs to take the available resources into consideration, including those invested in an African Elephant Fund. The *African elephant action plan* may also help in designing the *modus operandi*, structure, size and scope of the accompanying Fund.

In order to assist African elephant range States in their efforts to implement their responsibilities within the decisions, the CITES Secretariat requested the IUCN/SSC African Elephant Specialist Group [AfESG] to compile a draft Strategic Framework for an African elephant action plan following the CITES African elephant range States meeting held in Mombasa, Kenya, 23-25 June 2008. This framework was to draw on existing regional and national African elephant plans and strategies, the extensive inputs provided by participants in the Mombasa meeting and the provisions in Decision 14.75.

Several key African elephant conservation and management issues have common threads throughout the continent e.g. habitat loss and human-elephant conflict. However, the management approaches applied in dealing with these issues may vary among and within countries and sub-regions. The intention of this Strategic Framework for an African elephant action plan is to bring together many of the shared conservation challenges within a single Pan-African framework, encompassing common practices and management measures. Subsequent to this, the African elephant range States shall identify elephant conservation and management priorities which will subsequently form the final *African elephant action plan* and provide a basis for the development and implementation of the African Elephant Fund (see Decisions 14.75 to 14.79 mentioned above).

This Strategic Framework for an African elephant action plan is not intended to re-invent the wheel or propose new strategies and approaches for the continent. Much of the basic work has already been developed and articulated among the African elephant range States with support from the AfESG and others in their sub-regional and national elephant management plans and/or strategies. This Strategic Framework aims to reflect a broad consensus amongst African

elephant range States on the overarching content of the plan and in doing so highlights the key actions for managing the species and important habitats across its range. Given the broad range of activities that are possible and the current shortfall of identified resources, the activities highlighted in this Strategic Framework and others still to be identified emanated through feedback from the range States, there will be need a clear need to prioritise eventually. As priorities are likely to vary from country to country, some of these actions will inevitably differ between sub-regions and range States according to their distinctive features. However, it is outside the scope of this Strategic Framework to do so.

Development timeframe

To date, the Strategic Framework for the development of the *African elephant action plan* has included the collaborative and facilitated input from African elephant range States present during the CITES African elephant range State meeting held in June 2008. The ultimate development of the *African elephant action plan* will be guided by the range States and assisted by the CITES Secretariat with regard to analysing options for the establishment of the African Elephant Fund. The table below outlines the suggested timetable for the completion of the Strategic Framework and subsequent steps in the development of the *African elephant action plan*.

<u>Completed</u>	
Apr/May 2008:	Working document on the drafting of an <i>African elephant action plan</i> prepared by the IUCN/SSC African Elephant Specialist Group (AfESG).
23 - 25 Jun 2008:	Presentation and facilitation of discussions on the production of an <i>African elephant action plan</i> at the African elephant meeting convened by the CITES Secretariat (Mombasa, 23-25 June 2008). <i>Please note: During the Mombasa meeting it was collectively decided that the AfESG will develop the Strategic Framework for the development of the <u>African elephant action plan</u>, not the draft African elephant action plan as previously contracted to undertake.</i>
Aug 2008:	Ongoing communication and incorporation by the AfESG of input and comments from African elephant range States and CITES Secretariat into the Strategic Framework.
Sept/Oct 2008:	AfESG submits a first draft of the Strategic Framework for the an <i>African elephant action plan</i> to the CITES Secretariat. The CITES Secretariat ensures translation into French and English.
28 Nov 2008:	Draft Strategic Framework for an <i>African elephant action plan</i> circulated by the CITES Secretariat to African elephant range States with a 3-week period for comments and input.
Jan 2009:	Follow-up by AfESG, as necessary, on comments from African elephant range States. Circulation of a completed Strategic Framework for an <i>African elephant action plan</i> to the African elephant range States by the CITES Secretariat.
March 9-11 2009:	Discussions on the Strategic Framework for the development of an African elephant action plan at the CITES convened African elephant range States meeting in Nairobi, Kenya, including the prioritisation of the specific actions required, with the intention of agreeing the next steps in the preparation of the <i>African elephant action plan</i> . The Steering Committee of the African Elephant Fund is established.
<u>Next Steps</u>	
	Drafting of the <i>African elephant action plan</i> involving all African elephant range States through the representation of a Drafting Committee agreed at the March 2009 meeting. African elephant range States consensus on the final <i>African elephant action plan</i> . Steering Committee of the African Elephant Fund sets up operating procedures in relation to the implementation of the <i>African elephant action plan</i> .

INTRODUCTION

The African elephant (*Loxodonta africana*) is the world's largest terrestrial mammal. It is a species of considerable economic, ecological, cultural and aesthetic value to many people and arguably the world's most charismatic mega-herbivore. Africa's elephants represent strength and power for many cultures on the continent whilst being a key drawcard for visitors from across the globe.

African elephants possess extraordinary intelligence, complex social structures and remarkable abilities to adapt to their surroundings. They play a pivotal role in African ecosystems as unique 'keystone' species and natural habitat engineers [or agents of change], while providing a focus for fundraising, awareness building and stimulating action for broader conservation efforts as 'flagship' and 'umbrella' species.

Inhabiting a wide variety of habitats, African elephants range from arid deserts to dense humid forests. Currently, the African elephant is considered a single species with two extant subspecies, a forest form *L. a. cyclotis* and the savanna/bush elephant, *L. a. africana*. Recent morphological and genetic work has produced strong evidence to support the view that there is more than one species of African elephant. However, their taxonomic status in West Africa remains uncertain. In addition, some populations of high conservation value may consist wholly or partly of interspecific hybrids under multiple species scenario.

Elephant populations across Africa range in size from small and fragmented to large and contiguous. Throughout the 20th century, habitat loss and fragmentation has increasingly become a primary factor in the decline of elephants and their compression into protected areas. Increased human population growth, civil unrest, demand for elephant products, the growing conversion of land for agriculture and human-induced climate change have all resulted in the shrinkage of elephant habitat and populations within their native range. On top of this, human activities such as logging, farming and mining can and are continuing to degrade and reduce available habitats.

In severely depleted populations, elephant numbers may increase naturally over time to viable levels, in other cases remaining populations may need to be enhanced or re-established through translocations/re-introductions. In areas where there is limited opportunity for natural dispersal or concomitant range expansion, local elephant densities inevitably will increase. Where this takes place, the impact of elephants on their habitats and subsequently on other species may also increase. Much of the available information about methods to regulate or reduce wild populations of elephants is now out-dated, while some techniques are new and untested. Often the information based on relevant experience is neither readily accessible nor always applicable.

Capacity and resource constraints, coupled with inadequate knowledge of the status and distribution of elephants across the continent make it difficult for governments, as well as regional and international non-government organisations, to individually and/or collectively combat the challenges facing the conservation and management of this iconic, African species.

CONSERVATION STATUS OF AFRICAN ELEPHANTS

Distribution, Numbers and Trends

*Continental Overview*¹

Elephants occur in 37 range States in sub-Saharan Africa. Savanna elephants (*Loxodonta africana africana*) are predominantly found in Eastern and Southern Africa, while forest elephants (*Loxodonta africana cyclotis*) occur primarily in the Congo Basin of Central Africa. In West Africa, elephants live in both forests and savanna habitats, but their taxonomic status remains uncertain.

The status and distribution of elephants varies considerably across the regions, from small, fragmented populations in West Africa to vast, virtually undisturbed tracts of elephant range in Central and Southern Africa (see Annex 1). Southern Africa has the largest extent of elephant range of any region, and accounts for 39% of the species' total range area. Central and Eastern Africa follow with 29% and 26% of the continental total respectively, while West Africa accounts for only 5% (see Tables 1-5 in Annex 2). Detailed knowledge of elephant distribution is scanty in many parts of the continent, particularly in Central Africa and in countries emerging from armed conflict, such as Angola, Sudan, Liberia and Sierra Leone.

The total area of elephant range at the continental level is currently estimated at over 3.3 million km². This is nearly 1.6 million km², or 32%, less than the range estimated in 2002. This change in the estimated range is primarily due to the updating and improvement of previously unreliable information on elephant distribution, particularly in Central Africa, and should not be construed as a rapid reduction in actual elephant range in recent years.

Southern Africa is home to the majority of the continent's elephants – 320,904 (58% of the continental estimated total) (see Tables 1-5 in Annex 2) followed by Eastern Africa with 166,528 (30%), and Central Africa with 59,319 (10.7%) and West Africa with only 8,222 (1.5%).

In Southern and Eastern Africa, which together account for 88% (487,432) of the continental elephant estimate, comparable data was available to conduct a valid analysis of change in the two regions between the publishing of the AESR 2002 and AESR 2007. The results indicate an increase of 66,302 elephants in the combined estimates for the comparable populations. This significant increase translates into an estimated annual rate of increase of 4% in the comparable populations over this period. A significant increase of combined elephant numbers for Southern and Eastern Africa, 70,792, was also reported between the African Elephant Database 1998 and the AESR 2002. However, it is important to note that data is insufficient to make valid analysis of changes at the individual site level, and similarly the results do not imply a uniform increase across all sites, but merely an increase on average. It is important to note that the changes observed in the two regions described above do not imply similar changes in elephant numbers in West and Central Africa, as comparable data for are limited or unavailable.

¹ Note that all elephant numbers presented are combined DEFINITE and PROBABLE numbers based on the survey reliability categories described in the AESR2007 Data Types and Categorization section <http://www.african-elephant.org/aed/aesr2007.html>

Central Africa

Most of the continent's tropical forests are found in Central Africa, with forest originally occupying much of the range estimate of nearly 1 million km². The majority of this range is inhabited by forest elephants, with savanna elephants occurring in northern Cameroon, northern Central African Republic and Chad. Areas of potential hybridization between forest and savanna elephants exist in northern and eastern Democratic Republic of Congo, and possibly in southern Central African Republic.

Central Africa ranks second amongst the regions in terms of range extent, accounting for 29%, or 975,079 km², of the continental total. Improved and updated information of the species range throughout much of the region (Cameroon, Central African Republic, Chad, Congo and the Democratic Republic of Congo) indicates that much of the historically assumed possible ranges are now doubtful. It is important to note that this is not necessarily an indication of a recent reduction in the extent of actual elephant range.

Knowledge of elephant distribution remains unreliable in many parts of the region. The Democratic Republic of Congo and Gabon account for nearly half of the regional range estimate, whilst most of the remaining half is distributed approximately equally between Cameroon, Congo and Chad, with the Central African Republic and Equatorial Guinea accounting for 8% and 2% respectively. Although a third of the estimated range lies within designated protected areas, many parks and reserves lack any form of management or effective protection.

Increased survey activity has occurred in Central Africa, largely as a result of initiatives such as the CITES MIKE Programme and Congo Basin Forest Partnership. However, few surveys have provided reliable estimates of absolute elephant abundance. Estimates of absolute elephant abundance are only available for just over half a million km², or 52% of the total regional elephant range. Reliable estimates are only available for 13% of assessed land, while guesses still account for 73%.

In Central Africa it is impossible to make valid comparisons of elephant numbers over time due to the lack of quality and consistent survey data. At a country level, the quality of available information is currently lowest in Equatorial Guinea, followed by Cameroon, which still holds elephant populations of potential continental significance. Chad, Congo and the Democratic Republic of Congo all have comparably low levels of data quality, while Gabon and the Central African Republic have the highest overall levels in the region.

Eastern Africa

Savanna elephants are found in the grasslands and woodlands that dominate the Eastern African landscape, as well as in coastal and montane forest areas. Remnants of Central African forest, along the western edge of the region, may hold forest elephants or hybrids.

The viability of some populations, including those in Eritrea, Ethiopia, Rwanda, Somalia and certain parts of Uganda is already uncertain, while the status of elephants in Sudan has only recently begun to be evaluated (see below).

Elephant range in Eastern Africa is currently estimated to span over 880,000 km², and accounts for 26% of continental range. The region ranks third in terms of range extent, behind Southern and Central Africa, whilst approximately 30% of total range lies within designated protected areas.

Eastern Africa's largest known populations are found in Tanzania, Kenya and Sudan, with Tanzania alone holding 80% of the regional population. Elephant population estimates are only available for 45% of the estimated range area (approx. 394,000 km²), but of those the majority (86%) are considered reliable.

Sudan accounts for a sizeable proportion of the regional and continental range, although considerable uncertainty around the remaining range and numbers exist. Recent surveys undertaken in Southern Sudan indicate that a minimum of 6,850 elephants occur across 4 areas – Jonglei (Zeraf and Shambe G.R's), Boma N.P, Lotilla area and Southern N.P. However, it is likely that those numbers may be at least double for the region with increased surveys currently being undertaken.

While Tanzania is also the only country in the region to have developed and implemented a national elephant management policy, Kenya is in process of developing its own. Ongoing development of the transboundary conservation area between Selous N.P, southern Tanzania, and Niassa, northern Mozambique, covering roughly 154,000 km², would culminate in one of the largest in Africa and provide a contiguous corridor for the region's large numbers of elephants and other species to migrate.

Southern Africa

Savanna elephants predominate throughout the region, although small populations of forest elephants are found in the Angolan exclave of Cabinda and perhaps also in northwestern Angola. With an estimated total elephant range spanning over 1.3 million km², Southern Africa is the region with the largest elephant numbers, range area, numbers and is also the region with the smallest proportion of elephant range in protected areas (28%).

Over three-quarters of the population in southern Africa occur in just two countries, namely Botswana and Zimbabwe. These two countries together also account for nearly half (47%) of the continental population.

Elephant range is expanding in Botswana and spreading into neighbouring countries such as Angola and Namibia, however the overall range may decline in future as more detailed information is obtained, particularly from Angola and Mozambique, where range data are least reliable, but which together account for 57% of the regional range estimates.

Southern Africa has the highest overall quality of elephant information; however, there is wide variation amongst the countries, with nearly perfect information available for Swaziland, South Africa, Zimbabwe and Botswana, but virtually no reliable information for Angola.

Overall, elephant population estimates are available for approx. 690,000 km², or 53% of estimated population range in Southern Africa, with estimates from systematic surveys covering two-thirds of that area. South Africa, Botswana and Zimbabwe have complete coverage, in contrast with Angola, where estimates are only available for 5% of estimated elephant range.

West Africa

Elephant range in West Africa is found in small fragments scattered across the region, in forest, savanna and other habitats. It is the only region outside Central Africa where a sizeable proportion of elephant range occurs in tropical forests. While it was traditionally believed that both forest elephants and savanna elephants occurred in West Africa, recent genetic evidence suggests that a single form, whose taxonomic status remains to be ascertained, is found in the region.

Elephant range is less extensive in West Africa than in any other region, covering approximately 175,500 km², or 5% of the continental range estimate. In several areas, mainly in Nigeria, Benin and Chad, where human population is estimated to exceed 15 persons per km², the presence of elephants is unlikely.

Although the known range of elephants in West Africa equates to 71% of the total regional range, the current occurrence of elephants in many areas, particularly in Liberia, Sierra Leone and small habitat fragments in Nigeria and Côte d'Ivoire, remains uncertain.

Nearly three-quarters of the total range area (132,000 km²) is distributed among five countries, namely Côte d'Ivoire, Mali, Ghana, Nigeria and Burkina Faso, although aside from Burkina Faso, none of these countries have population greater than 1,500 individuals (see Table 5).

Although the estimated number of elephant numbers for West Africa increased markedly between the AESR 2002 and the AESR 2007, by almost 2,000 individuals, this is actually a result of more reliable surveys undertaken, particularly in the "WAPOK" ("W"-Arly-Pendjari-Oti-Madori-Kéran) complex. Improved estimates have also resulted in a decrease in the POSSIBLE and SPECULATIVE numbers.

Many populations in the region are probably not viable because they are genetically isolated, their numbers are small, and their sex ratios and age structures have been distorted by hunting. The single largest population is that of the "WAPOK" complex, which straddles the borders between Benin, Burkina Faso, Niger and Togo. This population alone holds more than half of the region's known elephants (6,798 individuals or 55% of all elephants in the region) and is covered by good quality systematic surveys.

International Conservation Status

The African Elephant was listed as *endangered* (EN A1b) in the IUCN Red List until 2004, when the status of the species was changed to a less severe *vulnerable* (VU A2a). This change in status reflects the recent and ongoing population increases in major populations in Southern and Eastern Africa. The 2008 IUCN Red List Assessment of the African elephant was released in October 2008, and was once again moved to a listing which indicates lower risk: *near threatened* (NT A2a). However, the status of African elephants varies considerably across the species' range. To better reflect this variation in status, regional-level listings for the four African regions in which elephants occur were proposed. Importantly, the overall current African elephant population trend appears to be increasing, although populations may at present be declining in parts of their range, ongoing increases in major populations in Eastern and Southern Africa, account for the large majority of known elephants on the continent.

With the exception of Botswana, Namibia, South Africa and Zimbabwe (in Appendix II), all populations of African elephants are currently listed in Appendix I of the Convention on the International Trade in Endangered Species of WILD Flora and Fauna (CITES). CITES generally prohibits the commercial international trade in specimens of Appendix I species, whilst international trade in specimens of Appendix II species may be authorized by grant or an export permit (or re-export certificate). For current updates and annotations relating to Appendix II African elephant populations, please refer to the CITES website: <http://www.cites.org/eng/>

CURRENT ISSUES IN AFRICAN ELEPHANT CONSERVATION

Illegal Killing

Illegal killing continues to go unabated throughout the continent in spite of the political will of many African countries to tackle illegal killing coupled with efforts from the international conservation community. The large numbers of elephants killed illegally annually feed the unregulated domestic markets in both Africa and Asia.

Widespread reports in recent years of intense illegal killing for ivory (and meat) throughout much of Central Africa, and other regions, are believed to be the main source of ivory currently supplying the world's illegal trade. Illegal killing is exacerbated by new roads for logging operations and mineral and oil extraction, which provide both access to deep forest and routes for the transport of ivory and meat. The prevalence of illegal killing is in theory facilitated by the free movement of light firearms and the porous border crossing between countries, combined with political instability and social unrest in many countries.

An apparent inadequacy in the capacity of range States to minimise or halt illegal killings resulting from limited financial and human resources, as well as appropriate legislature, exists throughout the continent. The CITES Monitoring the Illegal Killing of Elephants (MIKE) Programme has been building capacity in targeted range States to census and monitor elephant population trends and the illegal killing of elephants.

Ivory Trade

A clear link between the unregulated domestic ivory trade and illegal killing of elephants exists. The CITES Elephant Trade Information System (ETIS), managed by TRAFFIC – the wildlife trade monitoring network, is a comprehensive information system established to track illegal trade in ivory and other elephant products. Evidence indicates that despite the CITES ban, the existence of the unregulated trade facilitates the entry of illegally-obtained ivory into national and international commercial markets and by meeting this demand, these markets encourage further illegal killing.

The current main source of illegal ivory trade inside and outside the African continent is Central Africa. However, Central Africa is not alone and countries in each of the four regions of the continent (and many other international countries) have been reported to play an important role in the international ivory trade. The historic paucity of information in the illegal trade is

something which ETIS is countering and in the process helping to record and analyse levels and trends in illegal trade, rather than the illegal killing of elephants from across the continent.

The recently developed *Action plan for the control of trade in elephant ivory* facilitated by CITES highlights that all African elephant range States and other Parties and non-Parties with an ivory carving industry or internal trade in ivory that is unregulated, should urgently:

- a. prohibit the unregulated domestic sale of ivory (raw, semi-worked or worked). Legislation should include a provision which places the onus of proof of lawful possession upon any person found in possession of ivory in circumstances from which it can reasonably be inferred that such possession was for the purpose of unauthorized transfer, sale, offer for sale, exchange or export or any person transporting ivory for such purposes. Where regulated domestic trade is permitted, it should comply with the provisions of Resolution Conf. 10.10 (Rev. CoP14) (Trade in elephant specimens);
- b. issue instructions to all law enforcement and border control agencies to enforce existing or new legislation rigorously; and
- c. engage in public awareness campaigns publicizing existing or new prohibitions on ivory sales.

Human-Elephant Conflict

Human-elephant conflict (HEC) is a complex problem that threatens the livelihoods of many local communities in Africa, as well as the survival of African elephants and their habitats. Given the negative repercussions of HEC to people and wildlife, it is not surprising that a great deal of time and effort has been expended in recent years to find solutions to this problem.

Elephants impact negatively on local communities in many ways e.g. raiding crops, killing livestock, destroying water supplies, demolishing grain stores and houses, injuring and even killing people, etc. The costs of such damage can be significant. Elephants often damage crops in areas where farming yields are marginal, therefore exacerbating an already tenuous food security situation. HEC is also a major drain on the resources, both human and financial, of national wildlife management authorities. This is particularly the case in some elephant Range States where HEC has been given a high profile through intense coverage in local media.

In addition to such direct economic costs, there are also many “hidden” or social costs to HEC. For example, children may be prevented from going to school for fear of elephants. The productivity of farmers, who have to stay up all night defending their crops against marauding elephants may be reduced. Furthermore, persistent negative interactions with elephants contribute to general antagonism by some local communities towards the conservation of natural resources.

In most African nations today, the real and perceived costs of HEC at community level greatly outweigh the potential benefits of elephants and, subsequently, elephants are increasingly being excluded from many parts of their former range. Once the elephants are gone, however, the local communities will have lost a valuable asset, while at the same time contributing to the loss of biodiversity and overall degradation of the ecosystems on which they depend for their

livelihoods. The challenge therefore is to turn such “lose-lose” situations of conflict into “win-win” scenarios of sustainability for people, elephants and their shared habitats.

Greater democracy and better communications have in recent years allowed the issue to become increasingly politicized locally. However, to date, efforts to tackle HEC have focused mainly on short-term, field-based mitigation measures at the conflict site and these have often been applied in an ad hoc, uncoordinated manner, and have subsequently achieved little long-term success at alleviating the problem. Very few efforts have been directed at getting to the root causes of conflict such as incompatible land use practices, rural poverty, lack of land tenure, lack of ownership rights to wildlife, etc. For long-term management of this problem, mutually beneficial strategies for people and elephants, coordinated at national, local and site levels need to be developed and implemented. This requires consideration of numerous technical, institutional, socio-political and economic issues at all levels, strong political will, and the necessary expertise. Addressing such underlying causes is not only necessary to reduce the damage caused by HEC in the long-term, but also offers great potential for developing strategies that maximize benefits and minimize costs of elephants to local communities.

Habitat Loss and Fragmentation

As elephant populations recover from the poaching episodes of the 1970s and 1980s, human population growth and the concomitant loss and fragmentation of habitat are now one of the chief threats facing elephants across the continent. The resulting high levels of human-elephant conflict prevalent in many areas, coupled with a generalized lack of economic incentives for those sharing their resources with wildlife, highlight the need for sound land use planning policies and incentive systems to ensure the long-term viability of elephant populations.

Elephant range continues to decline through commercial logging and mining, and conversion of land to agriculture to meet the demand for land from increased human population growth. The decline in elephant range is marked, from 7.3 million km² in 1979 to 3.3 million km² in 2007. Furthermore, habitat fragmentation increased through the development of roads which bisect elephant habitat and also increase illegal killing due to easier access.

The development of transboundary conservation initiatives, particularly in Central, Southern and West Africa, has enabled the conservation of biodiversity across larger scales than previously. With respect to elephants, the ability to collaboratively manage populations and habitats across borders for the purpose of their (and other species) long-term conservation is essential in an era where their range is continuing to be reduced.

Local Overabundance

There is increasing concern throughout the continent, especially in southern Africa, over the adverse effect of increasing densities of elephants. This local overpopulation or overabundance of elephants is a major conservation and management challenge. As elephant numbers continue to increase, the debate on the need for specific management actions will continue.

Overabundance of elephants occurs when the agreed land-use values or objectives for an area are not being met due to elephant activity. Overabundance can therefore only be defined in

terms of land-use objectives (tourism, biodiversity conservation, etc.) set for a particular area and/or a set of defined human (e.g. economic, aesthetic, cultural) values. Making a judgement on whether the ecological impacts of elephants are negative and whether or when this problem should trigger some form of intervention to reduce such impact is that of the management authorities in consultation with relevant stakeholders.

There is no unique density of elephants that serves as a definition of 'overabundance' for any particular area. Rather, it depends on whether the impact that elephants have on their environment is acceptable. The relationship between elephant density and the ecological impacts of elephants is complex and variable, and our understanding of these processes is still developing. Decisions as to intervene to reduce elephant densities therefore have to be made with less than perfect scientific knowledge. When faced with such uncertainty, the *precautionary principle* is often advocated. However, when dealing with the issue of whether elephant densities or numbers should be reduced to prevent feared losses in biodiversity, the principle may be applied in two contrasting ways: (1) to keep elephant numbers generally low in the hope of preventing losses in biodiversity components; (2) to avoid killing elephants until it has been clearly established that a larger population would indeed lead to losses in biodiversity before stabilizing at some resource-limited level.

Whether elephant impact will be tolerated will ultimately determine the species' acceptability within the policy framework for the area in question. The absolute elephant density deemed to constitute overabundance might vary substantially among different areas, due to differences in management objectives as well as biological differences. Before considering options management authorities need to set clear conservation and management objectives for an area, and have established a clear decision-making process to guide the actors.

Institutional Weakness

A widespread lack of institutional capacity, knowledge and resources, coupled with difficulties associated with monitoring in different habitats, has resulted in a general weakness in elephant conservation and management across large parts of Africa. While it is difficult to ascertain the impact that some of the above issues/threats may be having on elephant populations, institutional weakness stemming from regulatory and legislative shortcomings and a lack of implementation and enforcement capacity are prohibiting conservation efforts.

Legislation often differs between neighbouring countries resulting in conflicting management of elephant populations and their habitat across borders – note that such management is improving greatly throughout certain areas of the continent in recent years. Insufficient resources supporting law enforcement resonates from a lack of priority which governments have regarding wildlife management often due to a poor economy.

At a sub-regional level three out of the four have developed Regional Elephant Conservation Strategies (West Africa in 1999, Central Africa in 2005 and Southern Africa in 2007), although the momentum and capacity to implement them varies. The implementation of the West African Elephant Conservation Strategy has progressed steadily over the last few years with governments and international supporters actively moving the activities forward. Unfortunately limited movement has been observed in Central Africa whilst Southern Africa, with the exception of a few countries, has been actively involved in developing national and transboundary programmes supported by solid institutional capacity and legislation.

OBJECTIVES, RESULTS AND ACTIVITIES OF THE STRATEGIC FRAMEWORK

Important: Please note that the proposed activities highlighted under each of the mentioned 'Result' sections are not exhaustive but only indicative of what needs to/could be undertaken to achieve the 'Result'. The activities presented came from the collaborative discussions held at the CITES African elephant range State meeting in Mombasa, Kenya during June 2008. Further elaboration, clarification, prioritisation and costing of these activities will be important for the development of a more detailed African elephant action plan.

Cross cutting objectives

Objective 1: Increase awareness on elephant conservation and management across all levels

Rationale

Essential to the success of the African elephant action plan is the involvement and creation of awareness in the wider community with regard to African elephant conservation and management principles. Current up-to-date information is often difficult to find, not synthesised, too scientific or not disseminated, therefore making it difficult for people to gain a greater awareness of the key issues. An emphasis should be placed on the need for objective, unbiased and reliable information.

Dissemination of materials to all audiences at local, regional and international levels should include information on all aspects of elephant ecology, including but not limited to the role they play in the environment, their potential socio-economic importance, and relevant policies, including legislative provisions, at the national and international level. In addition, targeted awareness raising campaigns aimed at all sectors of society need to be developed and implemented.

Result 1.1.: Dissemination of unbiased and reliable information enhanced and awareness raised within and across all audiences (community, public, scientific and political) in African elephant range States and beyond

Activities

- Consolidate unbiased and reliable information in elephant conservation and management for the popular and scientific audiences
- Encourage the dissemination of results to all stakeholder from local communities to elephant managers and conservators

Objective 2: Build capacity in elephant conservation and management

Rationale

The ability to access information and receive appropriate professional training is limited across Africa. Although advancements are being made to bring traditional knowledge into the scientific community and the building of capacity across the wider community is increasing, it remains patchy and generally inadequate.

Weak institutional capacity hampers the establishment and effectiveness of elephant programmes across the continent. The majority of wildlife departments lack the personnel and resources to effectively carry out their mandate and implement these programmes, and many do not have the requisite training, financial resources and technical know-how. In this regard, it will be important that countries be innovative about using their limited finances, consolidate fragmented resources, and identify other resources where possible.

The long-term success of this Strategic Framework is dependent on the ability to truly build capacity, provide the necessary resources and impart knowledge throughout the continent. In particular, capacity needs to be built at community and local government in parallel with higher level managers, and include a range of key disciplines from project design and management to protected area management and elephant biology, conservation and management.

Result 2.1: Capacity, understanding and knowledge in African elephant conservation management activities is developed across the continent

Activities

- Enhance project management skills of wildlife managers to enable them to more effectively manage projects
- Develop activities about enhancing the capacity of decision makers, wildlife managers and researchers to acquire, access and make use of the best available information, and to reinforce their adaptive management skills.
- Ensure that sufficient financial means and resources are available to provide capacity building and apply the 'lessons learned' on the ground

Objective 3: Improve knowledge and management of elephant populations and their habitats

Rationale

The knowledge of the population status of Africa's elephants varies considerably across the regions, from total population censuses to inaccurate, incomplete and/or uncharted range. A greater understanding of elephant populations is essential, in particular the populations in the dense forested areas of Central Africa and in countries elsewhere emerging from armed conflict, such as Angola, Sudan, Liberia and Sierra Leone.

Garnering knowledge on elephant numbers, distribution and habitat changes is important to elephant conservation and management, although this information is only as reliable as the methods and systems it is based on. Increased research and targeted planning efforts helps to better understand and address issues resulting from current and future habitat changes e.g. legislative, economic, environmental and social. And finally, development of a comprehensive strategy and action plan for the species' conservation and management will be constrained in the absence of greater understanding of elephant numbers, trends and distribution. It should however be recognized that cognizant of the available resources, acquiring 'full' knowledge about all aspects of elephant management will often remain unattainable, and that decision makers should make use of the best available information in combination with adaptive management approaches.

Result 3.1: The status of elephant populations (numbers, trends and distribution) across their range is established and monitored

Activities

- Prioritise new surveys to be done and outdated surveys to be repeated
- Carry out regular and repeated elephant population surveys using standardized and reliable methods
- Foster collaboration between range States for the regular, coordinated surveys of transboundary elephant populations
- Develop and maintain relevant databases on elephant population status for management purposes
- Maintain demographic profiles of populations

Result 3.2: Extent and rates of change in elephant habitats are monitored

Activities

- Carry out studies to assess changes in elephant habitats
- Evaluate the impacts of climate change on elephant habitats and elephant populations through appropriate research
- Develop and maintain relevant databases on changes in elephant habitats for management purposes
- Establish the links between habitat loss and degradation and broader land-use changes
- Encourage the dissemination of results to all elephant managers and conservators
- Enhance the application by managers and decision makers of the research findings

Result 3.3: New survey methods for forest and savanna elephant populations are developed and implemented

Activities

- Research new, appropriate and economically viable methods for elephant surveys across the continent
- Investigate and promote the use of appropriate technologies to census elephant populations
- Ensure or encourage compatibility amongst and standardization of surveys by promoting 'best practices' and minimum standards for conducting reliable surveys.
- Calibrate new survey techniques against old methods in order to allow for comparative results between past, present and future
- Implement new and appropriate methods for elephant surveys across the continent
- Disseminate results to all elephant managers and conservators

Result 3.4: Elephant numbers increase to viable levels where possible

Activities

- Carry out and consolidate a review of elephant re-introduction and translocation projects across Africa, including a review of potentially unviable populations and suitable candidates for translocation or reintroduction.
- Utilising the IUCN SSC AfESG Translocation Guidelines, conduct feasibility studies for both the source and destination sites as a necessary step in the planning and implementation of any intended elephant translocations
- Monitor and document elephant translocation projects in Africa
- Disseminate lessons learned from elephant translocation projects across Africa

Result 3.5: Locally overabundant populations of elephants are managed

Activities

- Investigate the development and use of appropriate technologies to manage elephant populations (using direct and indirect options) e.g. utilising the IUCN SSC AfESG publication Review of Options for Managing the Impacts of Locally Overabundant African Elephants as a solid basis
- Monitor and document elephant management projects aimed at reducing negative impacts of locally overabundant populations in Africa
- Actively disseminate the results to all elephant managers and conservators

Objective 4: Reduce illegal killing of elephants and illegal trade in elephant products

Rationale

Illegal killing of elephants is ongoing in much of continent, fuelled by, amongst others, local and international demand for ivory, local demand for meat and increasing human-elephant conflicts. It is imperative that a greater understanding of the domestic trade in elephants, in particular ivory, is obtained as such activities cannot be curtailed on an international level while domestic illegal, unregulated ivory markets flourish. Some populations may be able to withstand low levels of illegal killing, while other smaller populations are far more vulnerable and even limited illegal killing could have catastrophic effects on such populations, potentially resulting in local extinctions.

Regulating any legal off take and trade in elephants and their products, and preventing or reducing the illegal killing of elephants across Africa requires the adoption or reinforcement and effective implementation of appropriate laws and socio-economic incentives. At an International level, the recently developed *Action plan for the control of trade in elephant ivory* is a solid basis which all African elephant range States have agreed to. However, within many countries, the relevant laws are out of date, and the preventive or punitive measures inadequate. Some laws are more recent but may still be insufficient to ensure the effective management of elephants and other wildlife species and to enforce obligations under CITES. In support of ongoing and anticipated efforts to manage transboundary elephant populations, it could be useful to harmonise certain legislative provisions.

With respect to the legal trade in ivory, it is critical that appropriate policies and legislation for managing and monitoring such trade to ensure that the industry is legally conducted, remains sustainable and does not result in illegal killing or trade. If there are any violations of legislative requirements, they should be penalized.

Result 4.1: The nature of illegal killing is better understood

Activities

- Carry out work to identify the extent and causes of illegal killing, whether it be for ivory, meat, HEC or other reasons
- Measure and record levels, and changes in levels and trends, of illegal killing of elephants in elephant range States
- Establish and manage an information collection and management system on illegal killing of elephants at site, national and transboundary levels
- Monitor the illegal killing of elephants against a baseline to measure change in levels of illegal killing over time; causes of illegal killing; and the results of management and conservation efforts.
- Assess whether and to what extent observed trends are related to changes in the listing of elephant populations in the CITES Appendices and/or the resumption of legal international trade in ivory
- Provide information and capacity building needed for elephant range States to make appropriate management decisions for the long-term management of their elephant populations and the reduction of illegal killing

Result 4.2: The nature and dynamics of illegal trade is better understood

Activities

- Measure and record trends, and changes in trends, of illegal domestic/international trade in ivory and meat in elephant range States, and in trade entrepôts
- Assess whether and to what extent observed trends are related to changes in the listing of elephant populations in the CITES Appendices and/or the resumption of legal international trade in ivory
- Encourage the use of forensic DNA profiling to monitor legal and illegal trade dynamics
- Inspect and monitor domestic markets and traders
- Implement and enforce regulations in countries with legal domestic ivory markets
- Build capacity in range States to monitor trends in the illegal trade, maintain appropriate systems and report on the findings

Result 4.3: Appropriate policies and laws (legislation) at all levels (national, regional and international) are adopted or strengthened, ensuring that socio-economic compliance incentives and deterrent penalties are in place

Activities

- Review, adapt and, as necessary, strengthen existing policies and national laws relevant to the conservation and management of elephants
- Where such policies or laws do not exist, draft and adopt new policies or legislation
- Disseminate information about existing or new policies and legislation (laws) to the wider public through government outreach programmes, the media and other relevant networks
- Legislation should include a provision which places the onus of providing proof of lawful possession upon any person found in possession of ivory in circumstances from which it can reasonably be inferred that such possession was for the purpose of unauthorized transfer, sale, offer for sale, exchange, export of or transporting ivory for such purposes
- Involve local communities in all aspects of developing and implementing elephant conservation policies and laws for elephant conservation and management, with related benefit schemes
- Strengthen the mechanisms in place to control elephant poaching and illegal trade in ivory and other elephant products through, inter alia, the adoption of sanctions strict enough to be a deterrent, and an harmonization of deterrents among range States

Result 4.4: Appropriate laws and the judiciary needs are enforced at all levels (national, regional and international)

Activities

- Effectively enforce relevant laws and judiciary needs regarding the elephant conservation and management, including any authorized domestic harvesting, trade and international sale of ivory (raw, semi-worked or worked) at all levels sentencing
- Disseminate instructions and appropriate information materials to all law enforcement and border control agencies concerning applicable policies and legislation concerning elephants to enforce existing or new legislation rigorously

- Engage in public awareness campaigns publicizing existing or new policies and legislation regarding ivory sales or trade
- Increase cooperation to support prevention efforts as well as investigations and prosecution efforts among law enforcement agencies within and across borders
- Improve intelligence gathering and database management on potentially illegal activities
- Reinforce the resources for those charged with protecting elephants against illegal killing
- Analyze and improve the implementation of an appropriate effort to reduce fraud and trafficking of illegal ivory
- Build the capacity of range States to enforce laws and to monitor law enforcement effectiveness
- Assess needs and direct resources towards strengthening enforcement capacity in African elephant range States to combat poaching and illegal trade in ivory with a particular focus on the range States which have poor enforcement and low levels of resources
- Increase cooperation to support prosecution of offenders among law enforcement agencies within and across borders through participation in relevant organisations such as the Interpol Wildlife Working Group and the Lusaka Agreement Task Force
- Increase the capacity to exchange information on enforcement, including through, inter alia, the facilitation of regional meetings on enforcement to coordinate the undertaking of joint enforcement initiatives

Objective 5: Maintain elephant habitats and restore connectivity

Rationale

To limit increased pressures on the degradation and loss of elephant habitats, a greater understanding of the species current and potential range need to be understood for them to be secured.

In some regions of Africa, transboundary elephant populations are relatively important in terms of number and viability. However, it is a great challenge to manage habitat and elephant populations shared by two or more countries. These challenges are compounded by varying management options promoted by the different countries, coupled with potentially conflicting land use planning. Agricultural expansion, infrastructural developments, transhumance impacts and mining exploitation are some of the key issues across the continent that are resulting in elephant habitat fragmentation and loss. In particular, the threat of burgeoning infrastructure development across the continent is destroying connectivity in the landscapes. Such human pressure limits the movements of elephants and other species within their traditional range and therefore restricts their access to necessary resources such as water and food. There is a need to maintain large landscapes for elephants and under the current pressures for development and land-use change, this will require greater attention being paid to the maintenance of connectivity. Possible solutions are the establishment of new parks, as well as the establishment of corridors to connect them.

The majority of elephant range States in Africa are economically poor and traditionally dependent on subsistence, rural livelihood practices. In most cases, local and national land use planning has been *ad hoc* with limited formal assessment, planning and implementation undertaken. Subsequently, wildlife and their habitats have not been primary beneficiaries. Elephants are no exception to this and their extensive needs require large-scale land-use planning and execution. As a direct result of the general lack of land use policies at local, national and regional levels, land use planning practices applied across much of Africa to date have been inadequate at best and often antithetical to the principles of sustainable management of natural resources and large landscapes. As land pressures continue to grow across the continent, a larger vision with a longer-term planning horizon is needed. Therefore, elephant-friendly policies, which take into account socio-economic development aims and the tenure or other property rights of local communities, are needed to support the overall land-use planning.

Result 5.1: Transboundary populations and habitats are managed in connected landscapes

Activities

- Undertake feasibility studies to identify means to maintain connectivity between elephant populations and ranges within and between countries
- Create and/or restore, where possible, connectivity between elephant ranges within and between countries; sometimes through the establishment of corridors to allow movement
- Establish bilateral or multilateral agreements to support the collaborative management of transboundary landscapes and corridors
- Assess and mitigate habitat loss and fragmentation in transboundary habitats

- Develop programmes for the collaborative and participatory management of national and transboundary populations and habitats, actively involving local communities at all stages of planning and implementation

Result 5.2: Policies and supporting legislation to conserve existing habitats and restore landscape-level connectivity are developed and strengthened

Activities

- Assess the status and effectiveness of the existing policies and law
- Develop and/or adopt targeted policies and legislation for the protection and conservation of elephants (and other species) and their habitats, focusing on the need for greater connectivity in larger landscapes
- Implement new policies and legislation to protect and conserve the habitats of elephants (and other species), focusing on the need for greater connectivity in larger landscapes
- Collaborate across the regions to harmonise relevant aspects of land-use policies and laws and support their implementation

Result 5.3: Land-use planning approaches compatible with conservation are encouraged

Activities

- Conduct cross-sectoral planning exercises to develop land use policies compatible with large, elephant-friendly landscapes (especially those surrounding zones of protected areas) starting from local community to national levels, and transboundary, wherever possible
- Implement compatible land-use policies and practices starting from local community to national levels, and transboundary, wherever possible

Objective 6: Reduce human-elephant conflict

Rationale

Human-elephant conflict is a complex issue, affecting local communities in a variety of ways across the continent. The topic is so pervasive across Africa that it has taken on a political dimension across the range States and this, too, must be addressed through explicit and dedicated activities. The degree of conflict appears to be independent of the size of a country's individual or national elephant populations but likely dependent on local elephant densities in a specific location. The conflicts can affect the wellbeing of people and elephants both directly and indirectly, but essentially they are linked to the direct damages caused by elephants on local livelihoods e.g. crop raiding, fence damage, water access and injury and loss of human lives and domestic stock.

An array of deterrent methods have been tried and tested, although to date no permanent solutions have been discovered to protect people and their assets against elephant damage. Therefore a variety of mitigation tools must be used which are likely to be different in each and every circumstance and are often required in unison. Additionally, benefit sharing approaches – such as insurance schemes, compensation schemes, etc. – have also been trialled but more work is needed to develop working models and disseminate them broadly. Many elephants are killed as a result of both formal and informal actions to control the damage they cause. In some cases, illegal killing is allowed to go on with impunity and with the tacit support from local communities and authorities. This is especially true where government-led control efforts are weak and where communities obtain no benefit from sharing their land with elephants. For some elephant populations, the scale of current government-led “problem animal control” efforts may not be sustainable. Potential solutions must take into consideration the origin and causes as well as the extent of the conflicts. Adequate analyses of the various aspects in relation to these conflicts are indispensable before selecting the types of intervention to be adopted.

Eventually, all range States will require long-term management strategies for their elephants that include measures concerning human-elephant conflicts. Such strategies should integrate both preventive and proactive mitigation approaches and policy support at all levels. Large-scale land-use planning and management is arguably the key pre-emptive solution to combat human-elephant conflict. Appropriate planning for elephant-friendly landscapes will require setting aside or allocating areas for development, communal farming, wildlife and/or mixed practices. Such planning should be based on sound research, and must develop and implement mechanisms to alleviate pressure by elephants on landholders either through direct and indirect methods. To ensure the greatest probability of success, such strategies should be formulated through participatory consultative processes with all stakeholders from the local to national and sometimes international level.

Result 6.1: Appropriate knowledge and facilitated interventions are developed

Activities

- Undertake assessment studies on the nature and the extent of human-elephant conflicts and document the varying aspects of and solutions to the problem
- Conduct research to assess successful methods and to develop new deterrent methods through collaborative management processes, involving local communities as and where possible

- Evaluate the effectiveness of existing traditional deterrent methods and reinforce them where appropriate.
- Apply an adaptive management approach in addressing HEC problems, modifying mitigation tools and methods through continuous learning and feedback
- Evaluate the causes and the socio-economic consequences (the costs and benefits) of human-elephant interactions
- Identify or develop practical insurance or compensation schemes through a review of workers' compensation or other schemes
- Build the capacity of local communities to implement traditional and new deterrent methods at the site level
- Compile, promote and disseminate existing information on human-elephant conflict interventions to all levels from communities to national level decision makers

Result 6.2: Conflict management strategies and policies are developed, integrated and implemented at all relevant levels

Activities

- Formulate and review appropriate land use plans (c.f 3.4.4, above)
- Develop or strengthen policy guidelines for reducing human-elephant conflict at all levels
- Where possible, develop incentive mechanisms for people to increase benefits from elephants, while reducing costs
- Establish HEC committees, as appropriate, involving interested stakeholders from a variety of sectors to advise management authorities
- Harmonise land-use planning approaches across all sectors
- Develop and implement participatory action plans for preventing and managing human-elephant conflict
- Develop, as appropriate, long-term plans to manage locally overabundant elephant populations in harmony with national elephant policies

Objective 7: Strengthen understanding and cooperation among range States

Rationale

African countries have progressively strengthened understanding and cooperation within and among elephant range States on numerous important social, economic and environmental issues of mutual interest and concern. Regional elephant conservation strategies have been developed for Central, Southern and West Africa; Eastern Africa is in discussion about the development of its own Strategy; whilst a number of transboundary plans and projects have facilitated neighbouring elephant range States to develop joint management activities and protection for the species and their habitats. National elephant action plans, which are often quite compatible with others, exist in a number of range States.

Effective elephant conservation and management requires more than the development of plans and strategies. Real opportunities exist for regular sharing of information and dialogue at both technical and political levels as well as for the coordination of raising awareness and funds – all important actions in the management of the species across their range.

African countries need to work together because many of the issues facing the conservation and management of elephants are echoed across the continent. For example, neighbouring countries should coordinate surveys and anti-poaching activities where elephant populations move across their borders. Political and economic frameworks, such as the Economic Community of West African States (ECOWAS), Central African Forest Commission (COMIFAC), Southern African Development Community (SADC) and the East African Community (EAC), now exist in the sub-Saharan regions of Africa and these should be used to increase the profile of elephant management, and enable greater cooperation between range States. Even the African Union under the African Ministerial Conference on the Environment (AMCEN) presents opportunities for coordinating efforts for elephant conservation across the continent.

At an international level, it is equally important that range States honour their commitments and obligations to international conventions and use available multilateral fora and mechanisms to identify and address issues related to elephant management. For example, CITES provides the most important forum for discussing and agreeing on African elephant management, trade and conservation issues, the Convention on Biological Diversity is the international framework behind the conservation of species.

Result 7.1: Common views at both technical and political levels are built and maintained

Activities

- Organize cross-border, regional and continental consultative forums/meetings/exchanges to discuss the conservation and management of elephants and their habitats, including implications for socio-economic development, at all functional levels of management
- Develop, strengthen and formalize policies, cooperative agreements and MoUs for elephant conservation and management from national, cross-border (inter-state) to international levels
- Use existing political and economic frameworks to promote cooperation on elephant conservation and management e.g. ECOWAS, SADC, COMIFAC and EAC
- Foster cross-sectoral exchange and sharing to integrate the needs of elephant conservation and management into national priorities and agendas

- Harmonise, where possible, laws and policies on elephant management matters that affect transboundary populations
- Facilitate technical and policy exchanges within and across regions by means of forums, meetings and study tours
- Encourage the dissemination of information and technical training to stakeholders at all levels of elephant conservation and management, from communities up to high-level decision makers
- Ensure the compilation and dissemination at all 'technical and political levels' of accurate, objective and scientifically robust information concerning all aspects of elephant conservation and management.

Objective 8: Assess the costs and benefits of elephants to people

Rationale

The costs and benefits to people living with and around African elephants are very real. Human-elephant conflict, amongst other issues, continues to increase due to the loss of natural habitats as human populations continue to grow and their footprints are increasingly felt. However, the benefits or alleviation of these conflicts are often not commensurate to the impacts. Often the costs are accrued by those living with elephants and the benefits are gained by those living far afield, who gain from the more intangible benefits of elephants but do not carry the costs.

It is important to acknowledge that the 'value of elephants' (costs and benefits) to individuals and communities living with elephants throughout the continent is often markedly different to the 'value of elephants' for those people who do not. Although the immediate costs differ between such stakeholders, international supporters who are willing to pay for the elephants' existence through avenues such as tourism (direct and indirect methods) may potentially be converted into benefits of those living with elephants. Importantly, whilst assessing the varied costs and benefits of elephants to all involved, there is a need to also reconcile different views of the different stakeholders. At present, the majority of analysis is geared towards the individuals and communities living with elephants. Many who live far from elephants value them and are willing to pay for their existence, often through tourism (direct and indirect methods), but what they are willing to pay is rarely captured and transferred to those bearing the costs in an equitable manner.

While elephants have an intrinsic value to many, the primary concern must be with those communities most affected on a day-to-day basis and for whom the accrual of greater and more tangible (economic) benefits might translate directly into raising of tolerance levels to elephants. If the costs cannot be brought into balance with the benefits in these communities, elephants will be less likely to survive in the long-term as other ways of life and alternative livelihoods will eventually edge out the willingness of local people to live with wildlife.

Currently, there are differing views of the limits and/or extent of public support for various consumptive and non-consumptive elephant management options occurring throughout the continent. Focussed efforts should be undertaken to initially understand the varying perceptions and beliefs among local stakeholders and then appropriate and acceptable mechanisms for elephant conservation and management can be provided/promoted for each circumstance. In particular, the socio-economic costs and benefits for consumptive and non-consumptive management of elephants should be assessed, taking into action the varying ideologies and approaches of the various management authorities charged with the species' conservation, but looking towards the alleviating poverty and increasing food security.

Result 8.1: The impacts and potential benefits of elephants to people are assessed and, where appropriate, mechanisms to reduce negative impacts and to provide greater benefits are appropriately implemented

Activities

- Conduct studies to assess the costs of living with elephants i.e. direct and indirect economic and social values of elephants to people
- Assess the socio-economic value of consumptive and non consumptive use of elephants, and conduct value chain analysis

- Conduct an assessment of how to bring benefits from stakeholders who do not live with elephants but value them to those directly impacted by them e.g. what and how are people willing to 'pay' for the costs of elephant conservation in Africa
- Conduct new or consolidate existing studies that assesses the intangible benefits of elephants to those further afield and formulate recommendations on how their "willingness to pay" can be captured and realised at the local level
- Develop innovative incentive schemes that help to bring benefits to local communities, while simultaneously reducing costs of living with elephants
- Assess or consolidate knowledge on the direct and indirect ecological costs and benefits that elephants provide to assist in better understanding their role
- Promote, as appropriate, consumptive and non consumptive use of elephants and the sharing of benefits accrued with affected communities

Objective 9: Implement and monitor the African elephant action plan

Rationale

The implementation of the African elephant action plan requires strong political will from range State governments. Important to its success are the mechanisms driving the process, from fundraising to implementation and monitoring.

Because additional human and financial resources are critical to the plan's success, it will be necessary to prioritise actions. While difficult and often unpopular decisions will have to be taken, clear thinking and prioritisation will be valued by potential donors and, ultimately, is the only way progress can be assured.

Result 9.1: Activities described in the African elephant action plan are financed and implemented, and agreed targets are monitored and reported on

Activities

- Develop clear and measurable targets for each of the objectives and results within the African elephant action plan
- Estimate the cost of the actions as articulated and agreed in the African elephant action plan
- Prioritise interventions in the African elephant action plan for fund raising and subsequent implementation, taking into account the geographical and geopolitical scope of each action.
- Establish mechanisms for the coordination, fundraising, and disbursement, of funds raised (in a sustainable manner) in the name of the African elephant action plan
- Implement the actions called for in the African elephant action plan and report on these through a regular reporting mechanism through existing reporting mechanisms e.g. CITES biannual reporting
- Monitor and discuss progress towards achievement of the targets as laid out and agreed in the African elephant action plan
- Agree on institutional arrangements for monitoring the implementation of the African elephant action plan and for deciding on remedial measures in case no or too little progress is achieved

References

- African Elephant Specialist Group. 2003. *Statement on the taxonomy of extant Loxondonta*. <http://data.iucn.org/themes/ssc/sqs/afesg/tools/index.html>
- African Elephant Specialist Group. 2005. *Central Africa Elephant Conservation Strategy*. IUCN/SSC African Elephant Specialist Group. IUCN, Yaounde, Cameroun. 40 pp.
- African Elephant Specialist Group. 2005. *West Africa Elephant Conservation Strategy*. Revised. IUCN/SSC African Elephant Specialist Group. 2 Ouagadougou, Burkina Faso; Nairobi, Kenya. 29 pp.
- Balfour, D., Dublin, H.T., Fennessy, J., Gibson, D., Niskanen, L. and Whyte, I.J. 2007. *Review of Options for Managing the Impacts of Locally Overabundant African Elephants*. IUCN/SSC African Elephant Specialist Group. IUCN, Gland, Switzerland. 80 pp.
- Barnes, J.I. 1996. Changes in the economic use value of elephant in Botswana: the effect of international trade prohibition. *Ecological Economics* 18: 215-230.
- Blanc, J.J., Barnes, R.F.W., Craig, G.C., Dublin, H.T., Thouless, C.R., Douglas-Hamilton, I. and Hart, J.A. 2007. *African Elephant Status Report 2007: an update of the African Elephant Database*. Occasional Paper Series of the IUCN Species Survival Commission, No. 33. IUCN/SSC African Elephant Specialist Group. IUCN, Gland, Switzerland. vi + 276 pp.
- Blanc, J.J., Barnes, R.F.W., Craig, G.C., Douglas-Hamilton, I., Dublin, H.T., Hart, J.A. and Thouless, C.R. 2005. Changes in elephant numbers in major savanna populations in eastern and southern Africa. *Pachyderm* 38: 19-28.
- Blanc, J.J., Thouless, C.R., Hart, J.A., Dublin, H.T., Douglas-Hamilton, I. Craig, G.C., and Barnes, R.F.W. 2003. *African Elephant Status Report 2002: An update of the African Elephant Database*. Occasional Paper Series of the IUCN Species Survival Commission, No. 29. IUCN/SSC African Elephant Specialist Group. IUCN, Gland, Switzerland and Cambridge, UK. vi + 30 pp.
- Blanc, J. (Assessor). 2007. *Documentation Submitted in Support of the 2008 Red List Categorization of the African Elephant for Incorporation of the Species into the IUCN Red List of Threatened Species 2008*. IUCN/SSC African Elephant Specialist Group, Nairobi, Kenya.
- Brown, G. 1989. *The viewing value of elephants. The ivory trade and future of the African elephant*. Prepared for the Seventh CITES Conference of the Parties, October 1989. Lausanne, Switzerland.
- Caughley, G. 1983. Dynamics of large mammals and their relevance to culling. pp. 115–126. In: Norman, O.R. (Ed.). *Management of large mammals in African conservation areas*. Proceedings of a symposium held in Pretoria, South Africa, 29–30 April 1982. Haum Educational Publishers, Pretoria, South Africa. 14 pp.
- CITES. 2007. *Action Plan for Domestic Ivory Trade*. Annex to Decision 13.26 (Rev. CoP14): “The Conference of the Parties adopted the Action plan for the control of trade in elephant ivory attached as Annex 2 to these Decisions.” <http://www.cites.org/eng/dec/valid14/annex2.shtml>

CITES. 2008. *The CITES Appendices*. <http://www.cites.org/eng/app/appendices.shtml#1>

Comstock, K.E., Georgiadis, N., Pecon-Slattey, J., Roca, A.L., Ostrander, E. A., O'Brien, S.J. and Wasser, S.K. 2002. Patterns of molecular genetic variation among African elephant populations. *Molecular Ecology* 11: 2489–2498.

Douglas-Hamilton, I. 1979. *The African elephant action plan*. Final Report to the US Fish and Wildlife Service. Nairobi: IUCN.

Dublin, H.T. and Niskanen, L.S. (Eds.) 2003. *IUCN/SSC AfESG Guidelines for the in situ Translocation of the African Elephant for Conservation Purposes* The African Elephant Specialist Group in collaboration with the Re-Introduction and Veterinary Specialist Groups 2003.. IUCN, Gland, Switzerland and Cambridge, UK. x + 54 pp.

Dublin, H.T., McShane, T.O. and Newby, J. (Eds.) 1997. *Conserving Africa's Elephants: Current issues and Priorities for Action*. World Wide Fund for Nature International, Gland, Switzerland.

ETIS. 2008. *The Elephant Trade Information System (ETIS): What is ETIS?* <http://www.cites.org/eng/prog/ETIS/index.shtml> Last accessed 15th September 2008.

Fay, M., Elkan, P., Marjan, M. and Grossmann, F. 2007. *Aerial Surveys of Wildlife, Livestock, and Human Activity in and around existing and Proposed Protected Areas of Southern Sudan, Dry Season 2007. Phase I*. Wildlife Conservation Society and Government of Southern Sudan.

Gilson, L. and Lindsay, W.K. 2003. Ivory and ecology – changing perspectives on elephant management and the international trade in ivory. *Environmental Science and Policy* 6(5): 411-419.

Hanks, J. 2001. Conservation strategies for Africa's large mammals. *Reproduction, Fertility and Development* 459–468.

Hoare, R.E. 2001. *A decision support system for managing human-elephant conflict situations in Africa*. A document prepared for the IUCN African Elephant Specialist Group's Human-elephant Working Group. Harare, Zimbabwe. 37 pp.

Hoare, R.E. and du Toit, J.T. 1999. Coexistence between people and elephants in African savannas. *Conservation Biology* 13(3): 633–639.

Hunter, N.D., Martin, E.B. and Milliken, T. 2004. Determining the number of elephants required to supply current unregulated ivory markets in Africa and Asia. *Pachyderm* 36: 117-128.

[IFAW] International Fund for Animal Welfare. 2005. *The debate on elephant culling in South Africa – an overview*. IFAW, Cape Town, South Africa. 20pp.

[IUCN] The World Conservation Union] 2007. *2007 IUCN Red List of Threatened Species*. <http://www.iucnredlist.org>

Law, R.M. 1970. Elephants as agents of habitat and landscape change in East Africa. *Oikos* 21: 1-15.

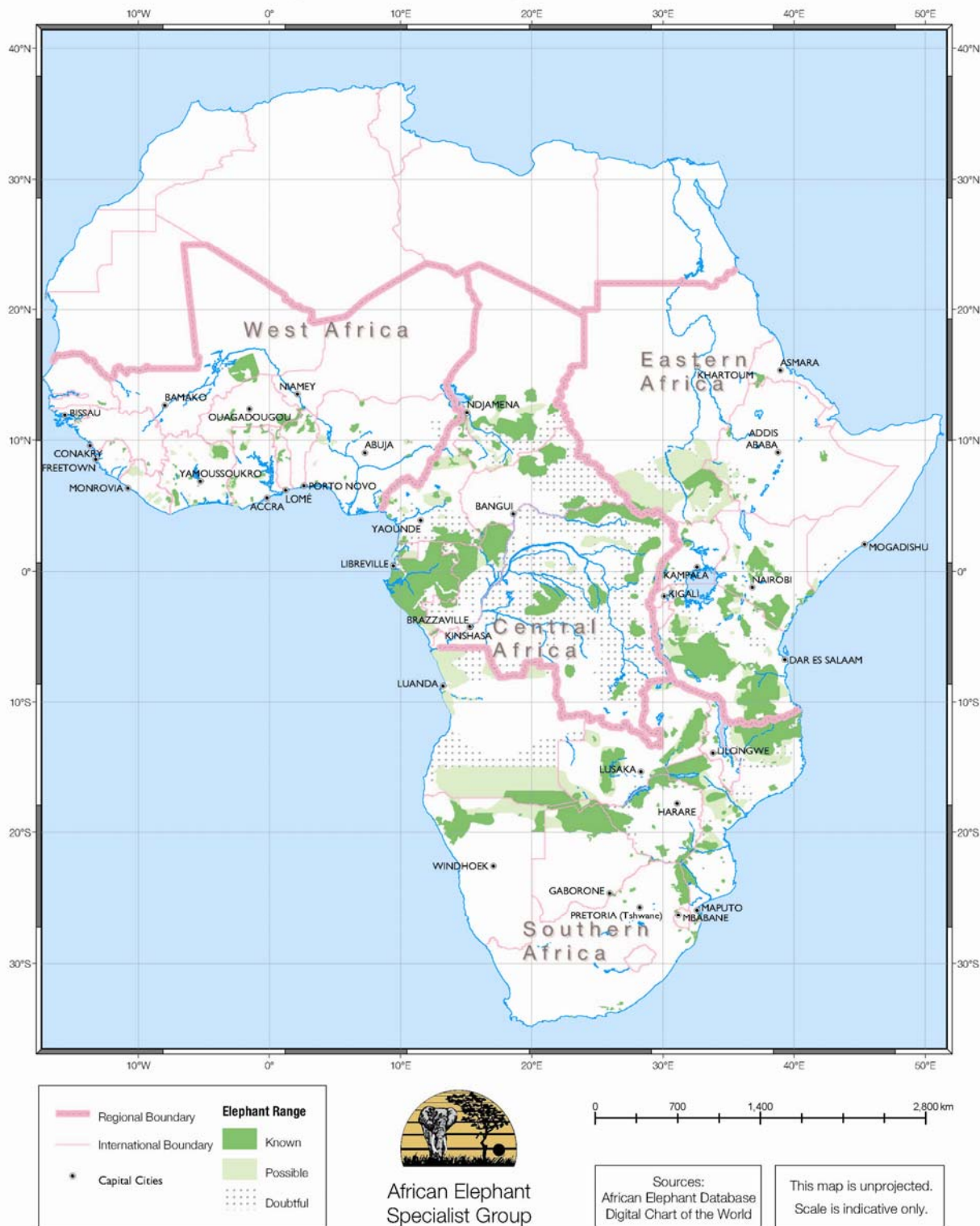
- Leader-Williams, N. and Dublin, H.T. 2000. Charismatic megafauna as 'flagship species'. pp. 53–81. In: Entwistle, A. and Dunstone, N. (Eds.). *Priorities for the conservation of mammalian diversity: has the panda had its day?* Cambridge University Press, Cambridge.
- Lindsay, W.K. 1993. Elephants and habitats: the need for clear objectives. *Pachyderm* 16: 34–40.
- Kahumbu, P.G. 2003. Elephant population trends and the challenges facing protected area managers. pp. 17–21. In: Colenbrander, B., de Gooijer, J., Paling, R., Stout, S., Stout, T. and Allen, T. (Eds.). *Managing African elephant populations: act or let die? Proceedings of an Expert Consultation on Control of Wild Elephant Populations*. Organized by the Faculty of Veterinary Medicine, Utrecht University, The Netherlands, held at Beekbergen, 7–8 November 2003. <http://elephantpopulationcontrol.library.uu.nl/paginas/frames.html>
- Owen-Smith, N., Kerley, G.I.H., Page, B., Slotow, R. and van Aarde, R.J. 2006. A scientific perspective on the management of elephants in the Kruger National Park and elsewhere. *South African Journal of Science* 102: 389–394.
- Parker, G.E. and Osborn, F.V. 2006. Investigating the potential for chilli, *Capsicum* spp., to reduce human–wildlife conflict in Zimbabwe. *Oryx* 40(3): 343–346.
- Parker, G.E., Osborn, F.V., Hoare, R.E. and Niskanen, L.S. (Eds.) 2007. *Conflict Mitigation: A Training Course for Community-Based Approaches in Africa. Participant's Manual*. Elephant Pepper Development Trust, Livingstone, Zambia and IUCN/SSC AfESG, Nairobi, Kenya.
- Poole. J. 1996. The African Elephant. In Kadzo K. (Ed.). *Studying Elephants*. African Wildlife Foundation Technical Handbook Series 7. African Wildlife Foundation.
- Roca, A.L., Georgiadis, N., Pecon-Slattery, J. and O'Brien, S.J. 2001. Genetic evidence for two species of elephant in Africa. *Science* 293: 1473–1477.
- Scholes, R. J. and Mennell, K.G. (Eds.) 2007. *Elephant Management: A Scientific Assessment for South Africa*. Witwatersrand University Press, Johannesburg.
- Stephenson, P.J. 2007. *WWF Species Action Plan: African Elephant, 2007-2011*. WWF, Gland, Switzerland.
- Thouless, C. 1999. *Review of African Elephant Conservation Priorities*. A working document of the IUCN/SSC African Elephant Specialist Group. Nairobi, Kenya.
- United Nations. 1992. *Rio Declaration on Environment and Development*. United Nations Conference on Environment and Development. UN Doc.A/CONF.151/26 (vol. I); 31 ILM 874 (1992). http://www.sdnpsbd.org/sdi/issues/sustainable_development/rio+10/declaration.htm
- Unknown. 2007. *Southern Africa Regional Elephant Conservation and Management Strategy*.
- van Aarde, R.J. and Jackson, T.P. 2007. Megaparks for metapopulations: addressing the causes of locally high elephant numbers in southern Africa. *Biological Conservation* 134(3): 289–297.

Walker, B.H., Emslie, R.H., Owen-Smith, R.N. and Scholes, R.J. 1987. To cull or not to cull: lessons from a southern African drought. *Journal of Applied Ecology* 24: 381-401.

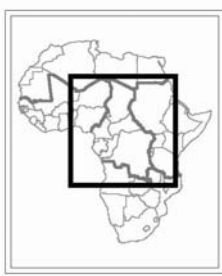
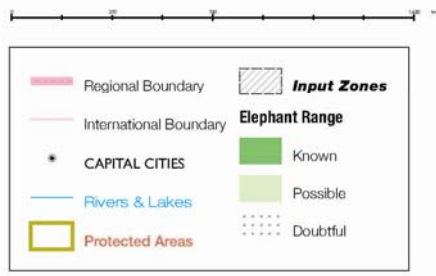
Western, D. 1989. The ecological role of elephants: a keystone role in Africa's ecosystems. In: *Ivory trade and the future of the African elephant*. vol. 2. A report by the Ivory Trade Review Group to CITES. International Development Centre.

Whyte, I.J., van Aarde, J. And Pimm, S.L. 2003. *Kruger's elephant population: it's size and consequence for ecosystem heterogeneity*. Pp.332-348. In: du Toit, J.Y., Briggs, H.C. and Rogers, K.H. (Eds.). *The Kruger experience: ecology and management of savanna heterogeneity*. Island Press, Washington, DC.

Elephant Range in Africa



Central Africa

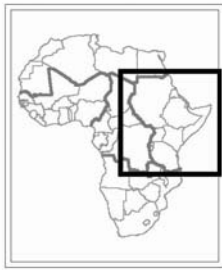
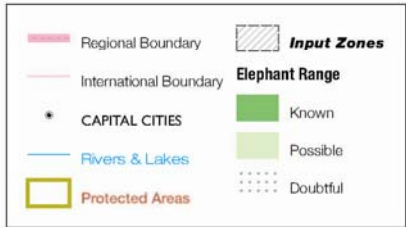
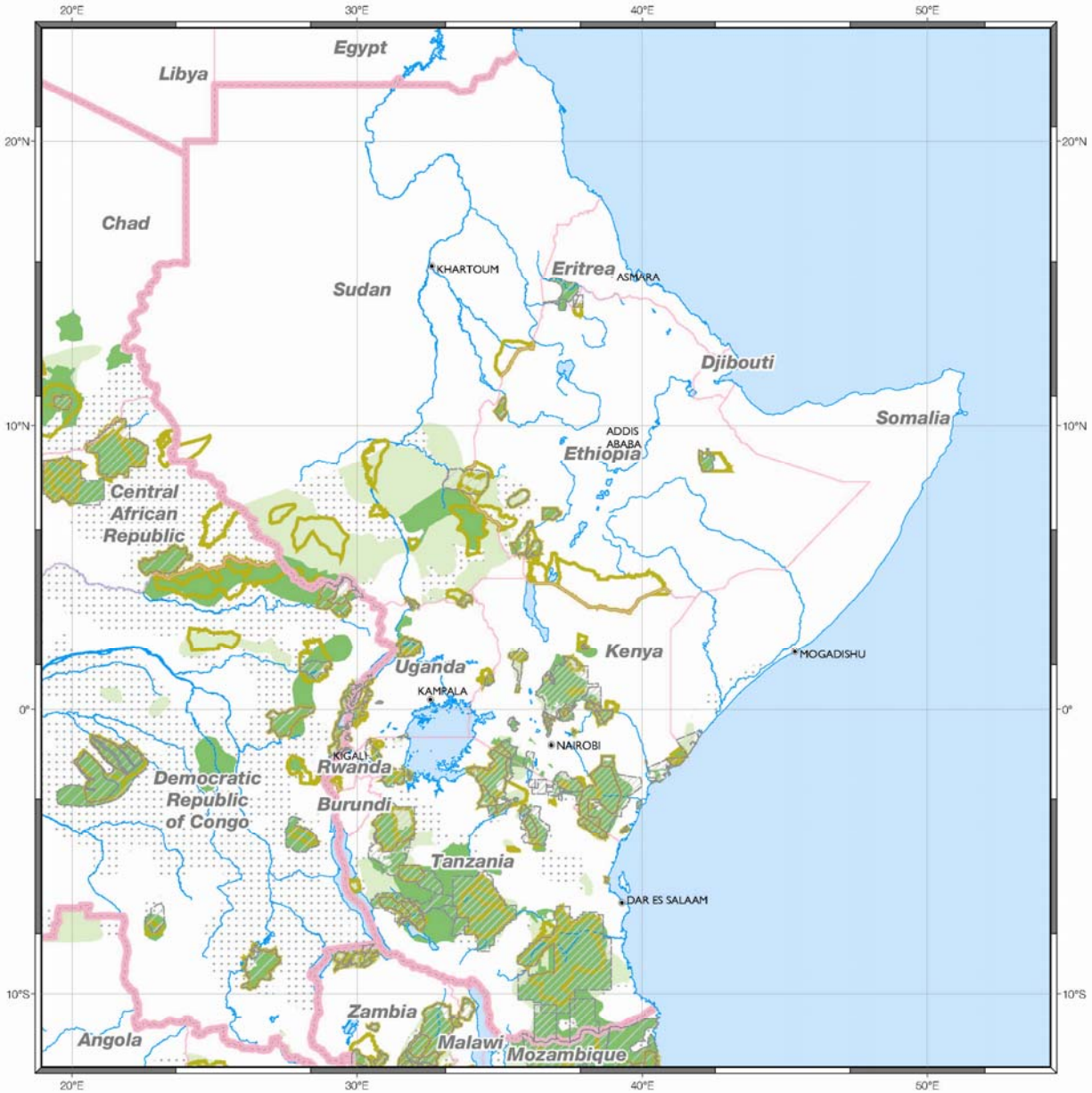


African Elephant Specialist Group

Sources:
African Elephant Database
Digital Chart of the World

This map is unprojected.
Scale is indicative only.

Eastern Africa

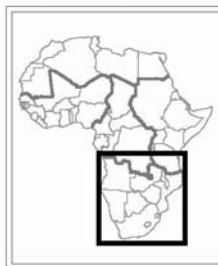
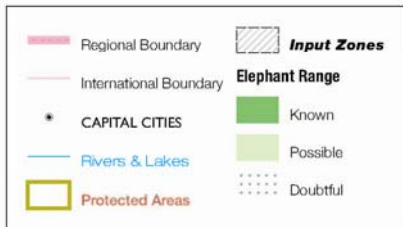


African Elephant Specialist Group

Sources:
African Elephant Database
Digital Chart of the World

This map is unprojected.
Scale is indicative only.

Southern Africa

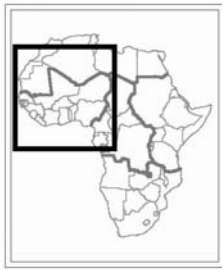
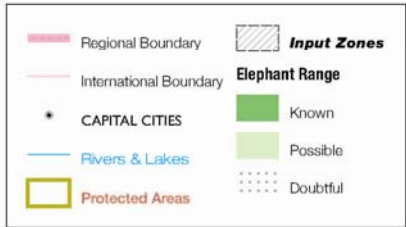
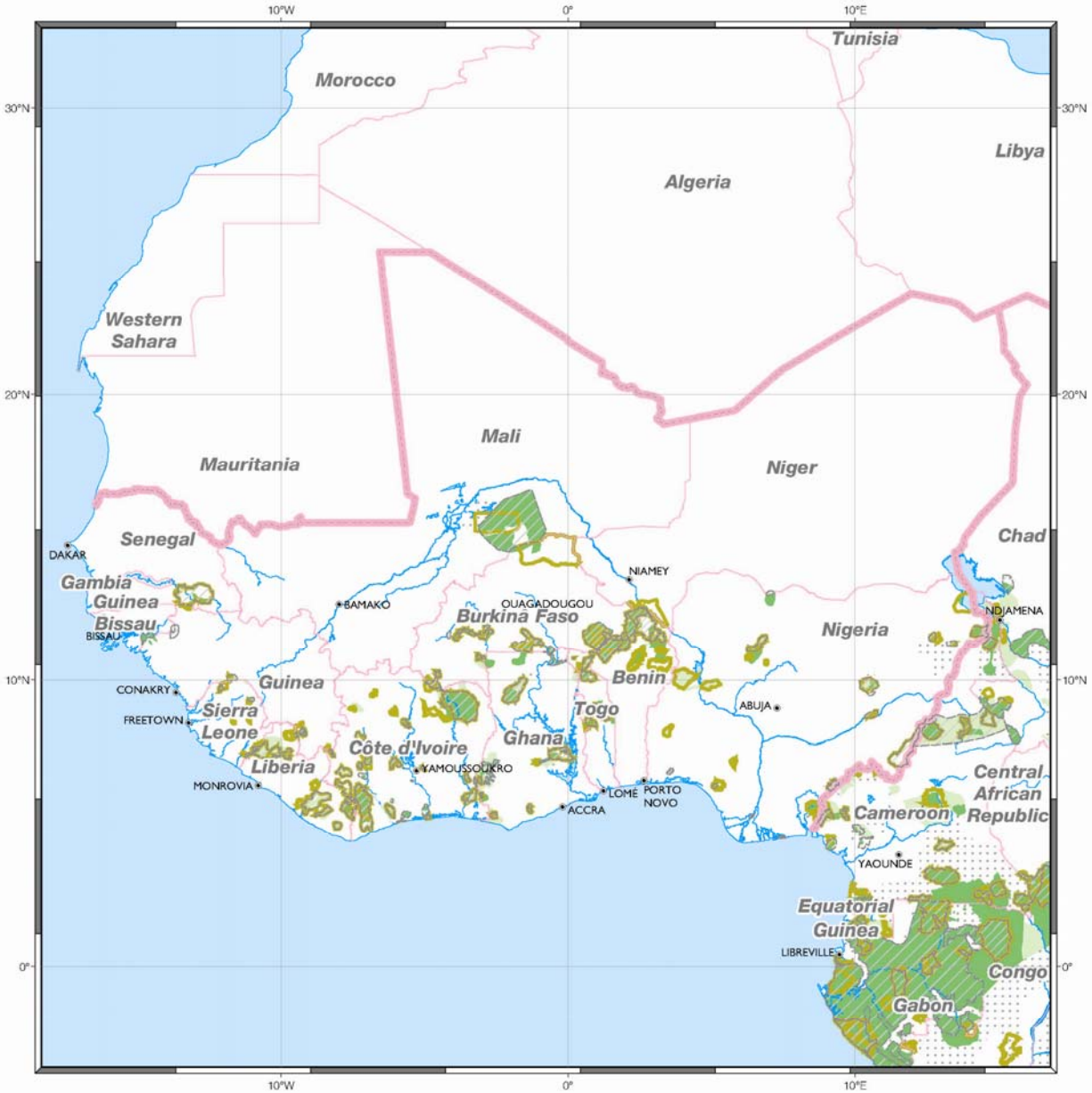


African Elephant Specialist Group

Sources:
African Elephant Database
Digital Chart of the World

This map is unprojected.
Scale is indicative only.

West Africa



African Elephant Specialist Group

Sources:
African Elephant Database
Digital Chart of the World

This map is unprojected.
Scale is indicative only.

Elephant distribution and numbers

Table 1: Continental and Sub-Regional Totals

REGION	Elephant Numbers				Range Area (km ²)	% of Continental Range
	Definite	Probable	Possible	Speculative		
Central Africa	10,383	48,936	43,098	34,129	975,079	29
Eastern Africa	137,485	29,043	35,124	3,543	880,063	26
Southern Africa	297,718	23,186	24,734	9,753	1,305,140	39
West Africa	7,487	735	1,129	2,939	154,545	5
TOTAL	472,269	82,704	84,334	50,364	3,335,827	100

Source: African Elephant Status Report 2007 www.iucn.org/afesg

Table 2: Central Africa Regional Totals

REGION	Elephant Numbers				Range Area (km ²)	% of Regional Range
	Definite	Probable	Possible	Speculative		
Cameroon	179	726	4,965	9,517	118,571	12
Central African Republic	109	1,689	1,036	500	73,453	8
Chad	3,885	0	2,000	550	1149,443	15
Congo	402	16,947	4,024	729	135,918	14
Democratic Republic of Congo	2,447	7,995	8,855	4,457	263,700	27
Equatorial Guinea	0	0	700	630	15,008	2
Gabon	1,523	23,457	27,911	17,746	218,985	22
TOTAL	10,383	48,936	43,098	34,129	975,079	29

Source: African Elephant Status Report 2007 www.iucn.org/afesg

Table 3: Eastern Africa Regional Totals

REGION	Elephant Numbers				Range Area (km ²)	% of Regional Range
	Definite	Probable	Possible	Speculative		
Eritrea	96	0	8	0	5,293	1
Ethiopia	634	0	920	206	38,365	4
Kenya	23,353	1,316	4,946	2,021	107,113	12
Rwanda	34	0	37	46	1,014	0
Somalia	0	0	0	70	4,526	1
Sudan*	20	0	280	0	318,239	36
Tanzania	108,816	27,937	29,350	900	390,366	44
Uganda	2,337	1,985	1,937	300	15,418	2
TOTAL	137,485	29,403	35,124	3,543	880,063	26

Source: African Elephant Status Report 2007 www.iucn.org/afesg

*Sudan: please note that this figure does not include recent survey data published by Fay *et al.* 2007 of an estimated minimum of 6,850 in Southern Sudan, although possibly double exist.

Table 4: Southern African Regional Totals

REGION	Elephant Numbers				Range Area (km ²)	% of Regional Range
	Definite	Probable	Possible	Speculative		
Angola	818	801	851	60	406,946	31
Botswana	133,829	20,829	20,829	0	100,265	8
Malawi	185	323	632	1,587	7,538	1
Mozambique	14,079	2,396	2,633	6,980	334,786	26
Namibia	12,531	3,276	3,296	0	146,921	11
South Africa	17,847	0	638	22	30,455	2

Swaziland	31	0	0	0	50	0
Zambia	16,562	5,948	5,908	813	201,247	15
Zimbabwe	84,416	7,033	7,367	291	76,931	6
TOTAL	297,718	23,186	24,734	9,753	1,305,140	39

Source: African Elephant Status Report 2007 www.iucn.org/afesg

Table 5: West African Regional Totals

REGION	Elephant Numbers				Range Area (km ²)	% of Regional Range
	Definite	Probable	Possible	Speculative		
Benin	1,223	0	0	0	13,673	8
Burkina Faso	4,154	320	520	0	19,872	11
Côte d'Ivoire	188	152	119	506	33,985	19
Ghana	789	387	241	12	23,301	13
Guinea	135	79	79	57	1,524	1
Guinea Bissau	0	0	7	13	1,346	1
Liberia	0	0	0	1,676	15,977	9
Mali	357	0	141	156	31,878	18
Niger	85	0	17	0	2,683	2
Nigeria	348	0	105	375	22,968	13
Senegal	1	0	0	9	1,090	1
Sierra Leone	0	0	80	135	1,804	1
Togo	4	0	61	0	5,444	3
TOTAL	7,487	735	1,129	2,939	175,545	5

Source: African Elephant Status Report 2007 www.iucn.org/afesg

Overview of existing sub-regional, national and other African elephant strategies and action plans (not including plans of 1991/2)

	Strategy		Action Plan		
	Sub-regional	Country	Sub-regional	Country	Corridors
Central Africa	2005				
Cameroon		1997			
Central African Republic					
Chad					
Congo					
Democratic Republic of Congo					
Equatorial Guinea					
Gabon					
Eastern Africa	-				
Eritrea					
Ethiopia					
Kenya		<i>In draft</i>			
Rwanda					
Somalia					
Sudan					
Tanzania		1994			
Uganda					
Southern Africa	2007				
Angola					
Botswana		2003			
Malawi					
Mozambique		1999			
Namibia		2007			
South Africa					
Swaziland					
Zambia		2003			
Zimbabwe					
West Africa	2005		2003		
Benin		2005			
Burkina Faso		2003			
Cote d'Ivoire		2004			

Ghana		2000			
Guinea		2007		2006	
Guinea Bissau					
Liberia				2006	
Mali					
Niger		<i>In draft</i>			
Nigeria					
Senegal					
Sierra Leone					
Togo		2003			

Existing sub-regional, national and other African elephant strategies and action plans

Continental

- AECCG. 1990. African Elephant Action Plan. Oxford, UK.
- Cobb, S., Shorter, C., Manspeizer, I., de Jode, H. & Hewett, D. (Eds.). 1991. The African Elephant Conservation Review. AECCG. Oxford, UK.
- Cumming, D.H.M., Du Toit, R.F. & Stuart, S.N. 1990. African Elephants and Rhinos: Status Survey and Conservation Action Plan. IUCN/SSC African elephant and Rhino Specialist Group. IUCN, Gland, Switzerland.
- Douglas-Hamilton, I. 1979. The African Elephant Action Plan. IUCN/WWF/NYZS Elephant Survey and Conservation Programme. IUCN/SSC African Elephant Specialist Group. Nairobi, Kenya.
- Thouless, C. 1999. Review of African Elephant Conservation Priorities. A working document of the IUCN/SSC African Elephant Specialist Group. Nairobi, Kenya.

Central Africa

- IUCN/SSC African Elephant Specialist Group. 2005. Central African Elephant Conservation Strategy. IUCN/SSC African Elephant Specialist Group. IUCN, Yaounde, Cameroun.
- Tchamba, M. N. & Djoh à Diang, I. 1997. National Elephant Management Plan. Ministry of Environment and Forestry, WWF. Yaoundé, Cameroun.

Old Elephant Conservation Plans developed in 1991

- Institut Zaïros pour la Conservation de la Nature. 1991. Plan de Conservation de l'Éléphant au Zaïre. Kinshasa, Zaïre.
- Ministère des Eaux et Forêts. Plan de Conservation de l'Éléphant au Gabon. Direction de la Faune et de la Chasse. Libreville, Gabon.
- Ministère de l'Economie Forestière. 1991. Plan de conservation de l'Éléphant au Congo. Direction de la Conservation de la Faune. Brazzaville, Congo.
- Ministère des Eaux, des Forêts, Chasse, Pêches et du Tourisme. 1991. Plan de Conservation de l'Éléphant au République Centrafricaine. Bangui, République Centrafricaine.
- Ministère du Tourisme. 1991. Plan de conservation de l'Éléphant au Cameroun. Direction de la Faune et des Parcs Nationaux. Yaoundé, Cameroun.

- Ministère du Tourisme et de l'Environnement. 1991. Plan de Conservation de l'Éléphant au Tchad. Direction du Tourisme des Parcs Nationaux et Réserves de Faune. Ndjamenana, Tchad.
- Ministry of Agriculture, Livestock, Fisheries and Forestry. 1991. Elephant Conservation Plan for Equatorial Guinea. Malabo, Equatorial Guinea.

Eastern Africa

- Wildlife Division. 2001. Management Plan for the African elephant in Tanzania (Unpublished draft). (Revised). Wildlife Division. Dar es Salaam, Tanzania.

Old Elephant Conservation Plans developed in 1991

- Dulling, P.J. & National Park Forces, Equatorial State. (Eds.). 1992. Elephant Conservation Plan Sudan.
- Kenya Wildlife Service. 1991. Elephant Conservation Plan for Kenya. Nairobi, Kenya.
- Ministry of Agriculture, Nature Conservation and Development. 1991. Elephant Conservation Plan for Ethiopia. Ethiopian Wildlife Conservation Organisation. Addis Ababa, Ethiopia.
- Ministry of Livestock, Range Forestry. 1991. Elephant Conservation Plan for Somalia. National Range Agency. Mogadishu, Somalia.
- Office Rwandais du Tourisme et Parcs Nationaux. 1991. Plan de Conservation de l'Éléphant au Rwanda. Kigali, Rwanda.
- Uganda National Parks. 1991. Elephant Conservation Plan for Uganda. Kampala, Uganda.
- Wildlife Conservation & National Parks. 1991. Elephant Conservation Plan for Sudan. Central Administration. Khartoum, Sudan.
- Wildlife Division, Ministry of Tourism, Natural Resources and the Environment. 1991. Elephant Conservation Plan for Tanzania. Dar-es-Salaam, Tanzania.

Southern Africa

- Department of Environmental Affairs and Tourism. 2008. National Norms and Standards for the Management of Elephants in South Africa. Department of Environmental Affairs and Tourism, Republic of South Africa.
- DG Ecological Consulting. 2003. National Policy and Strategy for the Conservation and Management of Elephants in Botswana. Department of Wildlife and National Parks, Gaborone, Botswana.
- Gibson, D. St. C (Ed.). 1999. National Strategy for the Management of Elephants in Mozambique. Ministry of Agriculture and Rural Development, National Directorate of Forests and Wildlife. Republic of Mozambique.

- Ministry of Environment and Tourism. 2007. Species Management Plan: Elephants (*Loxodonta africana*). Ministry of Environment and Tourism. Windhoek, Namibia.
- Ministry of Tourism, Environment and Natural Resources. 2003. National Policy and Action Plan on Elephant Management in Zambia. Ministry of Tourism, Environment and Natural Resources. Lusaka, Zambia.
- Unknown. Southern Africa Regional Elephant Conservation and Management Strategy. 2007.
- Plans concerning the Kavango-Zambezi trans-frontier conservation area (Angola, Botswana, Namibia, Zambia and Zimbabwe).

Old Elephant Conservation Plans developed in 1991/1992

- Anon. 1992. Draft Elephant Conservation Plan for South Africa. Skukuza, South Africa.
- Department of National Parks, Wildlife and Tourism. 1991. Elephant Conservation Plan for Malawi. Lilongwe, Malawi.
- Ministerio da Agricultura. 1991. Elephant Conservation Plan for Angola. Instituto de Desenvolvimento Florestal. Luanda, Angola.
- Ministerio de Agricultura. 1991. Plano de Conservação do Elefante para Mocambique. Direcção Nacional de Florestas e Fauna Bravia. Maputo, Moçambicanos.
- Ministry of Lands and Natural Resources. 1992. Elephant Conservation Plan for Zambia. National Parks and Wildlife Services. Chilanga, Zambia.
- Ministry of Wildlife, Conservation and Tourism. Elephant Conservation and Management Plan for Namibia. Windhoek, Namibia.

West Africa

- Barnes, R.F.W. Strategy for the conservation of elephants in Ghana. Wildlife Division, Forestry Commission. Accra, Ghana.
- Belemsobgo et al., 2003. Stratégie et Programme de gestion durable des elephants au Burkina Faso. Ministère de l'Environnement et du Cadre de Vie, Direction Général des Eaux et Forêts. Ouagadougou, Burkina Faso. Ouagadougou, Burkina Faso.
- Ministère de l'Agriculture, de l'Elevage et de la Pêche, 2005. Stratégie de conservation de l'éléphant au Bénin. Cotonou, Bénin.
- Ministère de l'Agriculture, de l'Elevage, de l'Environnement et des Eaux et Forêts, 2006. Stratégie nationale de gestation des éléphants en République de Guinée. Direction National des Eaux et Forêts. Conakry, Guinée.
- Ministère de l'Hydraulique, de l'Environnement et de la Lutte contre la Désertification, 2005. Stratégie de conservation des éléphants au Niger (draft). DFPP, Niamey, Niger.

- Ouatara et al. 2004. Stratégie de gestion durable des éléphants en Côte d'Ivoire. Ministère des Eaux et Forêts, Direction de la Faune et des ressources Cynégétique, Abidjan.
- Sebogo, L. & Barnes, R.F.W. 2005. Strategy for the conservation of West African elephants. Revised. IUCN/SSC African Elephant Specialist Group. Ouagadougou, Burkina Faso; Nairobi, Kenya.
- Sebogo, L. & Barnes, R.F.W. (Eds.). 2003. Action Plan for the Management of Transfrontier Elephant Conservation Corridors in West Africa. IUCN/SSC African Elephant Specialist Group. Ouagadougou, Burkina Faso.
- Sebogo, L. 2006. Action plan for the management of elephants in the Zياما Wenegisi Transfrontier corridor (Guinea - Liberia). IUCN/SSC African Elephant Specialist Group. Ouagadougou, Burkina Faso; Nairobi, Kenya.

Old Elephant Conservation Plans developed in 1991

- Direction des Parcs Nationaux du Sénégal. 1991. Plan de Conservation de l'Éléphant au Sénégal. Dakar, Sénégal.
- Direction Nationale des Eaux et Forêts. Plan de Conservation de l'Éléphant au Mali. Bamako, Mali.
- Forestry Development Authority 1991. Elephant Conservation Plan for Liberia. Monrovia, Liberia.
- Ministère du Développement Rural. 1991. Plan de Conservation de l'Éléphant au Bénin. Direction des Eaux, Forêts et Chasses. Cotonou, Bénin.
- Ministère de l'Agriculture et des Ressources Animales. 1991. Plan de Conservation de l'Éléphant au Côte d'Ivoire. Direction de la Protection de la Nature. Abidjan, Côte d'Ivoire.
- Ministère de l'Environnement et du Tourisme. 1991. Plan de Conservation de l'Éléphant au Togo. Direction des Parcs Nationaux, des Réserves de Faune et des Chasses. Lomé, Togo.
- Ministère de l'Environnement et du Tourisme. 1991. Plan de Conservation de l'Éléphant au Burkina Faso. Direction des Parcs Nationaux, des Réserves de Faune et de Chasses. Ouagadougou, Burkina Faso.
- Ministère de l'Hydraulique et de l'Environnement. 1991. Plan de Conservation de l'Éléphant au Niger. Direction de la Faune, Pêche et Pisciculture. Niamey, Niger.
- Ministère des Ressources Naturelles et de l'Environnement. Plan de Conservation de l'Éléphant au Guinée. Direction Nationale des Forêts et Chasse. Conakry, Guinée.
- Ministerio do Desenvolvimento Rural. 1991. Plan de conservation de l'Éléphant en Guinée-Bissau. Direcção General dos Serviços Florestais e Caça. Bissau, Guinée Bissau.

- Ministry of Agriculture, Natural Resources and Forestry. 1991. Elephant Conservation Plan for Sierra Leone. Freetown, Sierra Leone.
- Ministry of Land and Natural Resources. 1991. Elephant Conservation Plan for Ghana. Department of Game and Wildlife. Accra, Ghana.
- Natural Resources Conservation Council. 1991. Elephant Conservation Plan for Nigeria. Garki-Abuja, Nigeria.

**Feedback from the four facilitated groups on the African elephant action plan Themes
(two English and two French)
African Elephant Meeting Mombasa
June 2006**

Participants in Thematic Working Groups

Benin
Botswana
Burkina Faso
Cameroon
Central African Republic
Chad
Cote d'Ivoire
Republic of Congo
Democratic Republic of Congo
Equatorial Guinea
Eritrea
Ethiopia
Gabon
Ghana
Guinea
Guinea-Bissau
Kenya
Liberia
Malawi
Mali
Mozambique
Namibia
Niger
Rwanda
Senegal
Sierra Leone
Sudan
Republic of South Africa
Swaziland
United Republic of Tanzania
Togo
Uganda
Zambia
Zimbabwe

Thematic Groupings

Group1 English

Cross cutting

Increase awareness on elephants at all levels

Increase capacity in elephant conservation and management

1. Improve knowledge of elephant populations, habitats and their management

This is mostly about the elephants

2. Reduce illegal killing of elephants and trade in elephant products

Reword this to: Enhancing Law Enforcement

3. Maintain and/or restore connectivity within and between elephant populations

This refers more to managing land than elephants

4. Enhancing range States understanding and cooperation

5. Actioning the action plan

6. Reduce Human Elephant Conflict

This is linked to everything: from site to national land use planning

Can have political implications (positive and negative)

7. Assessing the values of elephants for all stakeholders

a. Costs and benefits

Thematic groupings

Group English 2

1. Improve knowledge of elephant populations, habitats and their management

- ❖ Enhance awareness at all levels on elephant issues

2. Reduce illegal killing of elephants and trade in elephant products

- ❖ Collaboration and strengthening law enforcements enhanced
- ❖ Strengthening Multilaterals and Bilateral agreements

3. Maintain and/or restore connectivity within and between elephant populations

- ❖ Human footprint and habitat expansion for elephants in relation to other land uses needs to be understood and addressed
- ❖ Improve information on Elephants outside Protected Areas

4. Enhancing range States understanding and cooperation

- ❖ Strengthening Multilaterals and Bilateral agreements for elephant conservation

5. Actioning the action plan (M & E tool)

- ❖ Enhance capacity of range states to implement the plan
- ❖

6. Human-Elephant Conflict management

- ❖ work with communities and all stakeholders

7. Capacity building in the management of elephants at all levels

Highlights participants want to be included in the themes

- Human- elephant conflict management by working with communities
 - Research needed to provide information for mgt.
 - Capacity building in the management of elephants
 - Building constituencies and create awareness at local levels
- Group thinks that rewording of Theme 5 as Monitoring and Evaluation for eg.

Cross cutting pts

- values of elephants in relation to livelihood understood
- improvement in capacity building
- Awareness creation and capacity building

Thematic groupings

Groupe 1

Thème 1 Améliorer les connaissances sur l'éléphant, leurs habitats et leur gestion

- Sans changement

Thème 2 Réduire l'abattage illégal des éléphants et le commerce illégal de leurs produits

- Nouveau Thème 2; Réduire le braconnage d'éléphants

Thème 3 Maintenir et/ou établir les connections de les populations d'éléphants et entre elle

- Maintenir et restaurer l'habitat des éléphants

Thème 4 Améliorer la compréhension et la coopération entre les États

- Renforcer la coopération entre les États de l'aire de répartition de l'éléphant d'Afrique

Thème 5 Mettre en œuvre le Plan d'Action

- Supprimer, parce que cette activité est une activité transversale
- Nouveau Thème 5 : Réduire les conflits homme - éléphant

Groupe de Travail: Session 1

Regroupement des Thèmes

Thèmes Transversaux

- ❖ Accroître la sensibilisation sur la conservation et la gestion des éléphants à tous les niveaux
- ❖ Renforcer la capacité pour la conservation et la gestion des éléphants

1. Improve knowledge and management of elephant populations and their habitats
Améliorer les connaissances et la gestion des populations d'éléphants et leurs habitats

2. Reduce illegal killing of elephants and illegal trade in elephant products
(Réduire/Lutter contre) l'abattage illégal des éléphants et le commerce illégal des produits d'éléphants

3. Maintain elephant habitats and restore connectivity
(Maintenir l'habitat des éléphants et restaurer les connectivités)

4. Strengthen cooperation and understanding among elephant range States
Renforcer la coopération et la compréhension entre les Etats de l'aire de répartition des éléphants

5. Reduce human-elephant conflict
Réduire les conflits homme-éléphants

6. Assess the costs and benefits of elephants to people
Evaluer les coûts et bénéfices des éléphants pour la population

7. Implement and monitor the action plan
Mettre en oeuvre et assurer le suivi du plan d'action

**Feedback from the four facilitated groups on the African elephant action plan sub-themes
(two English and two French)**

**Thematic sub-groupings
Group1 English 1**

1. Improve knowledge and management of elephant populations and their habitats

- Assessing population numbers, trends and range estimates (distribution)
 - Conducting regular, repeated population surveys
- Assessing changes in habitat and range
- Researching and applying appropriate survey methods for forest and savannah populations
- Re-introducing or enhancing depleted populations
- Managing locally overabundant populations, direct and indirect options
- Mitigating further habitat loss and fragmentation, including assessing the impact of climate change
- Continued research on aspects which will improve knowledge and management of elephant populations and habitats
- Enhance the use of appropriate technologies to manage elephant populations
- Maintain relevant data for management purposes

2. Reduce illegal killing of elephants and illegal trade in elephant products

- –Identify the use and nature use of existing illegal killing for meat and ivory
- Reviewing and increasing implementation of appropriate law enforcement
- Developing or strengthening policies and supporting legislation at the international, sub-regional and national levels
- Establish impact of illegal killing on other uses
- Increase cooperation to support prosecution of offenders among law enforcement agencies within and across borders
- Establish and manage an information collection and management system on illegal killing of elephants at national levels

- Use forensic DNA profiling to monitor legal and illegal trade dynamics
- Improve intelligence gathering and database management on illegal activity

3. Maintain elephant habitats and restore connectivity

- Managing transboundary/transfrontier populations
- Encouraging land-use planning approaches
- Developing or strengthening policies and supporting legislation
- Establish TFCAs
- Formulate and review existing policies and legislation as they relate to habitats and connectivity
- Create new corridors within country where possible
- Restore elephant habitats

4. Reduce human-elephant conflict

- Introduce innovative elephant deterrent techniques around fringe communities in elephant range
- Establish database on human wildlife conflicts
- Formulate and review appropriate landuse plans (c.f 3 above)
- Assess human elephant conflict and document the varying aspects of the problem
- Develop or strengthen policy guidelines for reducing human elephant conflict
- Promote and use existing information to reduce HEC (disseminate lessons learnt in user friendly forms)
- Develop a system where people are able to get benefits from elephants
- Establish cross sectoral HEC committees at local levels

5. Strengthen cooperation and understanding among range States

- Building and maintaining consensus at technical and political levels

- Organize consultative forums/ meetings to discuss elephants and their habitats
- Formalize strategies for elephant management
- Conclude and implement frameworks for management of transboundary populations
- Use existing political fora to promote cooperation on elephant management
- Establish MoUs for crossborder cooperation on elephant management
- Develop and implement accountable and secure ivory stock management systems
- Increase benefits to communities to enhance sense of ownership
- Increase cooperation between countries producing and consuming
- Increase cooperation on intelligence sharing on law enforcement

6. Assess the costs and benefits of elephants to people

- Formulate instruments to incorporate local communities in cost and benefit sharing
- Establish cost of maintenance and management of elephants and habitats
- Promote consumptive and non consumptive use of elephants
- Establish the cost of living with elephants

• Implement and Monitor the action plan

- Identifying the way forward e.g. implementation, funding, etc.
- Establish the cost of implementing and monitoring AEAP
- Establish structures to implement and monitor
- Establish focal persons for monitoring and implementing the plan
- Establish coordination, fundraising and fund disbursement mechanisms

Thematic groupings

Group English 2

1. Improve knowledge and management of elephant populations and their habitats

- Assessing population numbers, trends and range estimates (distribution)
- Assessing changes in habitat and range
- Promoting researching and applying (new) survey methods for forest and savannah populations
- Re-introducing or enhancing depleted populations
- Managing locally overabundant populations, direct and indirect options
- Mitigating further habitat loss and fragmentation, including assessing the impact of climate change

2. Reduce illegal killing of elephants and illegal trade in elephant products

- Create better understanding of the nature/factors influencing the existing illegal killing for meat and ivory
- Enhance law enforcement
- Developing or strengthening policies and supporting legislation at the international, sub-regional and national levels

3. Maintain elephant habitats and restore connectivity

- Create and Manage transboundary/ transfrontier populations
- Harmonise land-use planning approaches
- Developing or strengthening policies and supporting legislation

4. Strengthen understanding and cooperation among elephant range States

- Build and maintain consensus at technical and political levels
- Improve communication among inter range states

5. Reduce human-elephant conflict

- Harmonise land-use planning approaches
- Develop incentive schemes
- Develop appropriate knowledge and facilitate interventions

6. Assess/Implement the costs and benefits of elephants to people

- Assess the direct and indirectly economic values of elephants to people

7. Implement and monitor the action plan

- Develop operational frameworks
- Identify prioritise interventions

Theme 1: Brainstorming section (NB all pts under each bullets are related and grouped)

- Assessing abundance and distribution of elephants in range states
Population, trends and range estimates are assessed
Complete information gaps on elephant population and habitat through research
Develop reliable database
Mitigate habitat loss
- Promoting research on elephant ecology and behavioural dynamic
Assess the impact of climate change
Enhance research and dissemination of results

Cross cutting

Assess the costs and benefits of elephants to people

Groupe de Travail: jour 2

Sous-groupes thématiques

Thèmes Transversaux

- ❖ Accroître la sensibilisation sur la conservation et la gestion des éléphants à tous les niveaux
- ❖ Renforcer la capacité pour la conservation et la gestion des éléphants

1: Améliorer les connaissances et la gestion des populations d'éléphants et leurs habitats. **Improve knowledges and management of elephant populations and their habitats**

- Évaluer l'effectif des populations, leur tendances et leur aire de répartition
- Evaluate of elephant populations number, their trend and distribution

- Conduire des études sur les populations et les habitats des éléphants
- Conduct studies on elephants and their habitats

- Rechercher des méthodes nouvelles d'évaluation de populations d'éléphants de la forêt et de la savane et les appliquer
- Search new survey methods for forest and savanna populations and implement them

- Réintroduire des populations ou reconstituer des populations viables
- Re-introduce populations or reconstitue viable populations

- Gérer les populations localement surabondantes: options directes et indirectes Manage local
- Manage local surabondance of populations : direct and indirect options

- Enrayer la perte et la fragmentation des habitats, notamment en évaluant l'impact des changements climatiques.
- Check lost and fragmentation of habitas, notably through the assessment of climate change impacts.

2: Réduire l'abattage illégal des éléphants et le commerce illégal des produits d'éléphants **Reduce illegal killing of elephants and illegal trade of their products**

- Renforcer les mécanismes de contrôle du commerce illégal d'ivoire et des autres sous-produits d'éléphants
- Reinforce struggle against illegal killing of elephants and ivory trade as well as the other products

- Renforcer les mécanismes de contrôle de l'abattage illégal d'éléphants

- Reinforce controle mechanism of illegal killing
- Élaborer ou renforcer et mettre en œuvre les politiques et les législations adaptés aux niveaux national, régional et international
- Design or reinforce and implement adapted policies and laws at national, regional and international levels
- Associer les populations/communautés riveraines a la conservation des éléphants
- Involve population/communities in elephants conservation

**3: Maintenir l'habitat des éléphants et restaurer les connectivités.
Maintain elephant habitats and restore connectivities**

- Entreprendre des études de faisabilité de corridors de connectivités
- Undertake feasibility studies on corridors of connectivity
- Restaurer les connectivites ayant disparu
- Restore connectivities that desapeared
- Identifier les connectivités inter habitats
- Identify the inter-States connectivities
- Impliquer les communautés locales dans la gestion des connectivites
- Involve local communities in the management of the connectivities
- Développer les programmes de gestion de populations et des habitats transfrontaliers
- Develop programmes for the management of transfrontier populations and habitats

**4: Renforcer la compréhension et la coopération entre les États de l'aire de répartition des éléphants .
Reinforce understanding and cooperation between elephant range States**

- Développer des projets transfrontaliers sur la gestion d'éléphants
- Develop transfrontier projects on elephants management
- Développer les réseaux de communication et d'échanges entre les États
- Develop communication and exchange networks between States
- Établir des accords inter États dans différents aspects de la gestion des éléphants
- Establish inter States agreements on different aspects relating to elephants management
- Harmoniser les législations et les politiques de gestion des éléphants entre États
- Harmonise laws and management policies on elephant management between States

**5: Réduire les conflits homme-éléphants
Reduce human–elephant conflicts**

- Entreprendre des études d'évaluation de la nature et de l'ampleur des conflits
- Undertake assessment studies on the nature and the extend of conflicts
- Mener des campagnes d'information et sensibilisation des populations
- Conduct information and sensitization campains
- Recenser et vulgariser les méthodes d'éloignement des éléphants
- List and disseminate elephant deterrent methods
- Production d'un plan directeur (master plan) d'aménagement des terres avoisinant les aires protégés
- Produce a master management plan of the protected areas surrounding zones
- Développer et mettre en œuvre des mécanismes de règlement des conflits
- Develop and implement conflicts management mechanism

**6: Évaluer les coûts et bénéfiques des éléphants pour la population.
Evaluate the costs and profits of elephants for human population.**

- Entreprendre des études socio-économiques
- Undertake socio-economic studies

**Mettre en oeuvre et assurer le suivi du plan d'action.
Implement and monitor the action plan**

- Faire le plaidoyer du plan d'action
- Conduct a lobbying campaign of the action plan
- Établir un mécanisme de suivi/évaluation du plan d'action
- Establish an assessment/monitoring mechanism of the action plan
- Établir un mécanisme de financement durable du plan d'action
- Establish a sustainable funding mechanism of the action plan
- Créer une unité de coordination de la mise en œuvre du plan d'action
- Create a coordinating unit for the implementation of the action plan

Sous-groupes thématiques

Groupe 2

1. Améliorer les connaissances et la gestion des populations d'éléphants et leurs habitats. **Improve knowledges and management of elephant populations and their habitats**

- Evaluer les effectifs des populations et suivre leur évolution ainsi que leur aire de répartition
- Evaluate number of elephant populations, their trend and their distribution
- ~~Conduire des études de population répétées~~
- Evaluer les changements intervenant dans l'habitat et l'aire de répartition
- Evaluate changes on habitat
- Rechercher des **nouvelles** méthodes d'étude des populations des forêts et de la savane et les appliquer
- Search new methods of study on forest and savanna populations and implement them
- Réintroduire les populations là où elles ~~ou augmenter celles qui sont~~ **éteintes ou menacées d'extinction**
- Re-introduce populations where they are extincted or endangered
- Gérer les populations localement surabondantes: options directes et indirectes
- Manage local surabondance of populations : direct and indirect options
- ~~Enrayer la perte et la fragmentation des habitats, notamment en évaluant l'impact des changements climatiques (voir thème 3 see theme 3)~~
- **Evaluer l'impact des changements climatiques sur les habitats**

Evaluate impact of climate changes on habitat

2. Réduire l'abattage illégal des éléphants et le commerce illégal de leurs produits. **Reduce illegal killing of elephants and illegal trade of their products**

- Comprendre la nature de l'abattage illégal d'éléphants pour la viande et l'ivoire
- Understand the nature of illegal killing for meat and ivory
- Réduire l'abattage illégal et le commerce illégal de l'ivoire et des produits de l'éléphant (Formuler comme le thème, this is similar to the theme)
- Renforcer la lutte active contre l'abattage illégal des éléphants et le commerce de l'ivoire et des autres produits
- Reinforce struggle against illegal killing of elephants and ivory trade as well as the other products
- Examiner et améliorer la mise en oeuvre d'une lutte appropriée contre la fraude
- Analyze and improve the implementation of an appropriate struggle against fraud
- Elaborer ou renforcer les politiques et appliquer les législations aux niveaux international, régional et national
- Design or reinforce policies and implement law at international, regional and national levels

3. Maintenir l'habitat des éléphants et restaurer les connectivités. **Maintain elephant habitats and restore connectivities**

- Atténuer la perte et la fragmentation des habitats
- Mitigate habitats lost and fragmentation
- Favoriser les approches axées sur la planification de l'aménagement du territoire
- Favour approaches on land use planning
- Gérer les populations transfrontières
- Manage transfrontier populations
- Elaborer ou renforcer les politiques et appliquer les législations aux niveaux international, régional et national
- Design or reinforce policies and implement laws at international, regional and national levels

4. Renforcer la compréhension et la coopération entre les Etats de l'aire de répartition des éléphants Reinforce understanding and cooperation between elephant range States

- Obtenir et maintenir le consensus aux niveaux technique et politique
- Obtain and maintain consensus at technical and political levels
- Favoriser et renforcer la création des cadres de concertation inter-états
- Favour and reinforce creation of inter-States concertation frameworks
- Elaborer ou renforcer les politiques et appliquer les législations aux niveaux international, régional et national
- Design or reinforce policies and implement laws at international, regional and national levels

5. Réduire les conflits homme- éléphants Reduce human-elephant conflicts

- Evaluer les causes et les conséquences sociaux- économiques de conflits homme-éléphants
- Evaluate the causes and the socio-economic consequences of human –elephant conflicts
- Elaborer et mettre en œuvre des plans d'action participatifs pour la prévention et la gestion des conflits homme- éléphants
- Elaborate and implement participative action plans for preventing and managing human-elephant conflicts

6. Evaluer les coûts et bénéfices des éléphants pour la population. Evaluate the costs and profits of elephants for human population

- Mener des études sociaux-économiques des valorisations non préjudiciables des éléphants
- Conduct socio-economic studies on non-harmful valorisation of elephants
- Mener des études sur les biens et services fournis par les éléphants
- Conduct studies on goods and services provided by elephants

- Evaluer les dégâts et préjudices causés aux populations du fait de la présence des éléphants
- Assess damages and harms caused to populations by elephant presence

Mettre en oeuvre et assurer le suivi du plan d'action. Implement and monitor the action plan

- ~~Trouver des moyens d'aller de l'avant: mise en oeuvre, financement, etc.~~
- Mettre en place une structure de coordination et de suivi par les états de l'aire de répartition
- Put in place a coordination and monitoring structure by the range States
- Définir un mécanisme consensuel et transparent de mobilisation et de gestion des fonds d'affectation pour les éléphants
- Define a consensual and transparent mechanism of fundraising and management of the affected funds to elephants

Thèmes Transversaux. Transversal themes

- ❖ **Accroître la sensibilisation sur la conservation et la gestion des éléphants à tous les niveaux**
- ❖ **Increase sensitization on elephant conservation and management at all levels**
- ❖ **Renforcer la capacité pour la conservation et la gestion des éléphants**
- ❖ **Reinforce capacity for elephant conservation and management**