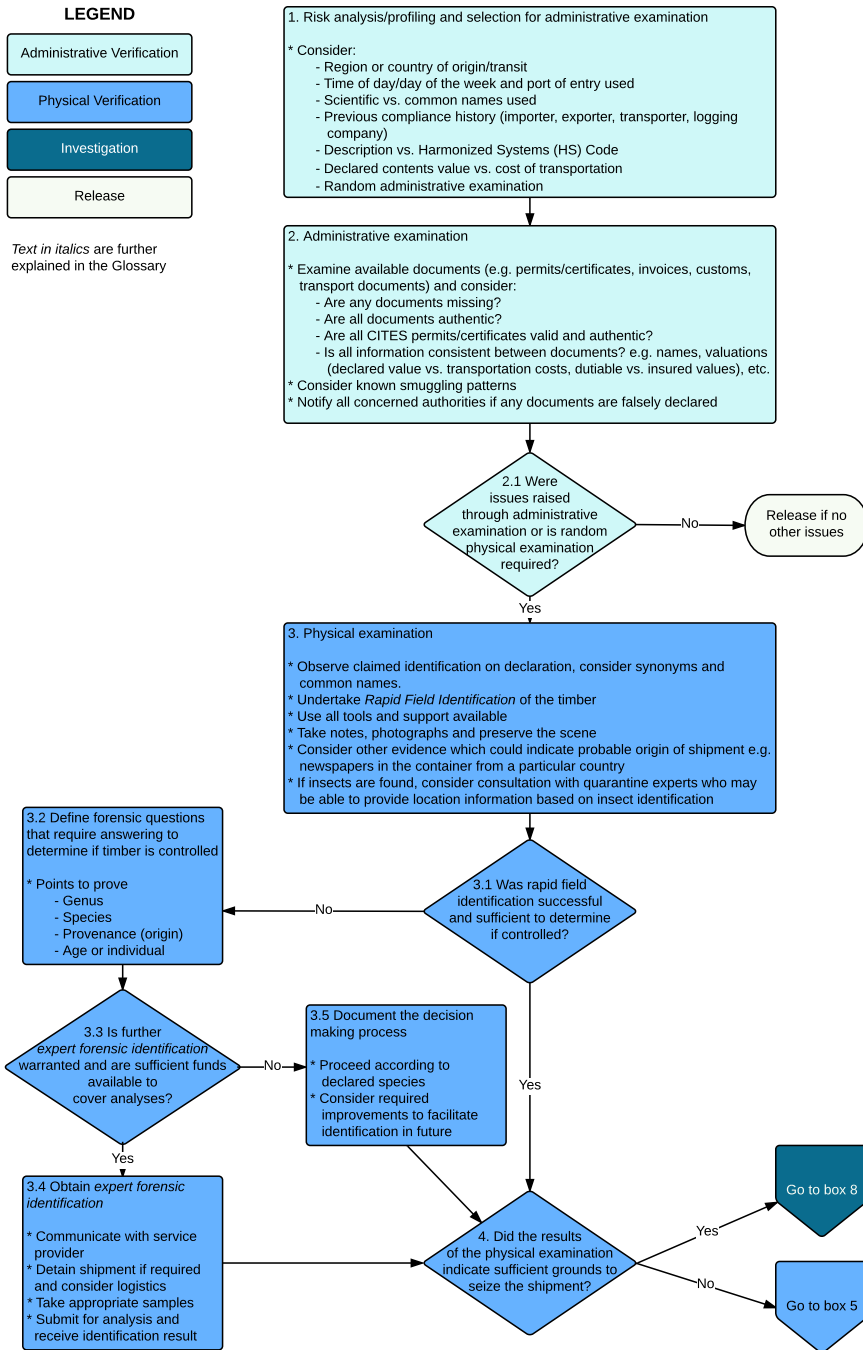


Figure 1. Law enforcement best practice flow diagram for timber





Glossary

Expert forensic identification: Scientific identification undertaken by experts according to strict standards; required for court proceedings; often a lengthy process; not always required to establish grounds for further investigation (see *rapid field identification*).

Rapid field identification: Tools and identification techniques available to non-experts; used to quickly establish a legal basis for intervention (e.g. seizure, provision of charging documents etc.); less accurate than *expert forensic identification* but adequate to establish grounds for further investigation.