

ANNEX 1 – TABLES AND FIGURES

(Pagination refers to the following pages, unless otherwise indicated)

Tables

Table 1. Summary of population and catch trend data.....	Proposal page 4
Table 2. <i>Lamna nasus</i> life history parameters	3

Figures

Figure 1. Porbeagle <i>Lamna nasus</i>	Proposal page 1
Figure 2. Global <i>Lamna nasus</i> distribution	2
Figure 3. FAO fishing areas.....	2
Figure 4. Global reported landings of <i>Lamna nasus</i> by FAO area 1950–2006.....	4
Figure 5. Northeast Atlantic landings of <i>Lamna nasus</i> by fishing State, 1950–2006.....	4
Figure 6. Landings of <i>Lamna nasus</i> from ICES Areas (Northeast Atlantic), 1973–2004.....	5
Figure 7. Landings of <i>Lamna nasus</i> by Norway in the Northeast Atlantic, 1926–2006	5
Figure 8. Landings of <i>Lamna nasus</i> by Denmark in the Northeast Atlantic, 1954–2004	6
Figure 9. Landings of <i>Lamna nasus</i> by Faroe Islands in the Northeast Atlantic, 1973–2007	6
Figure 10. Population trends from a BSP model of Northeast Atlantic porbeagle	7
Figure 11. Depletion in total biomass and numbers from 1926 of Northeast Atlantic porbeagle	7
Figure 12. <i>Lamna nasus</i> landings in the Northwest Atlantic	8
Figure 13. Modelled trends in <i>Lamna nasus</i> stocks in Canadian waters, 1961–2008	8
Figure 14. Predicted stochastic recovery trajectories of Northwest Atlantic <i>Lamna nasus</i>	9
Figure 15. Predicted deterministic recovery trajectories of Northwest Atlantic <i>Lamna nasus</i>	9
Figure 16. New Zealand commercial landings of porbeagle sharks	10
Figure 17. Unstandardised CPUE indices for the New Zealand tuna longline fishery	10
Figure 18. Catch per unit effort and biomass trends for Southwest Atlantic porbeagle	11
Figure 19. Spawning Stock Biomass trend for Southwest Atlantic porbeagle	11
Figure 20. Canadian Atlantic landings and TAC for porbeagle shark, 1995–2007	12

ANNEX 2 – SCIENTIFIC SYNONYMS OF *LAMNA NASUS*

ANNEX 3 – RANGE STATES AND SEA AREAS WHERE *LAMNA NASUS* HAS BEEN RECORDED

ANNEX 4 - EU CONSIDERATIONS ON CRITERIA FOR AMENDMENT OF APPENDICES I AND II REGARDING COMMERCIALLY EXPLOITED AQUATIC SPECIES

ANNEX 5 - REFERENCES

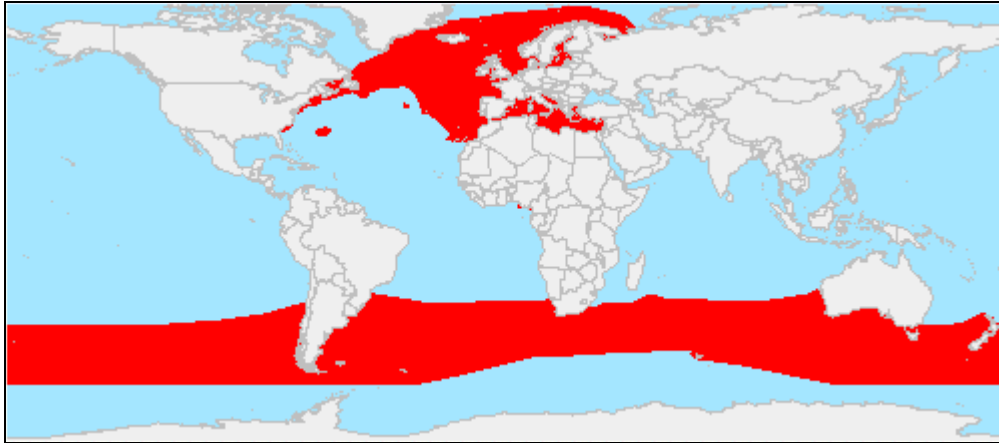


Figure 2. Global *Lamna nasus* distribution (Source: FAO FIGIS 2004).

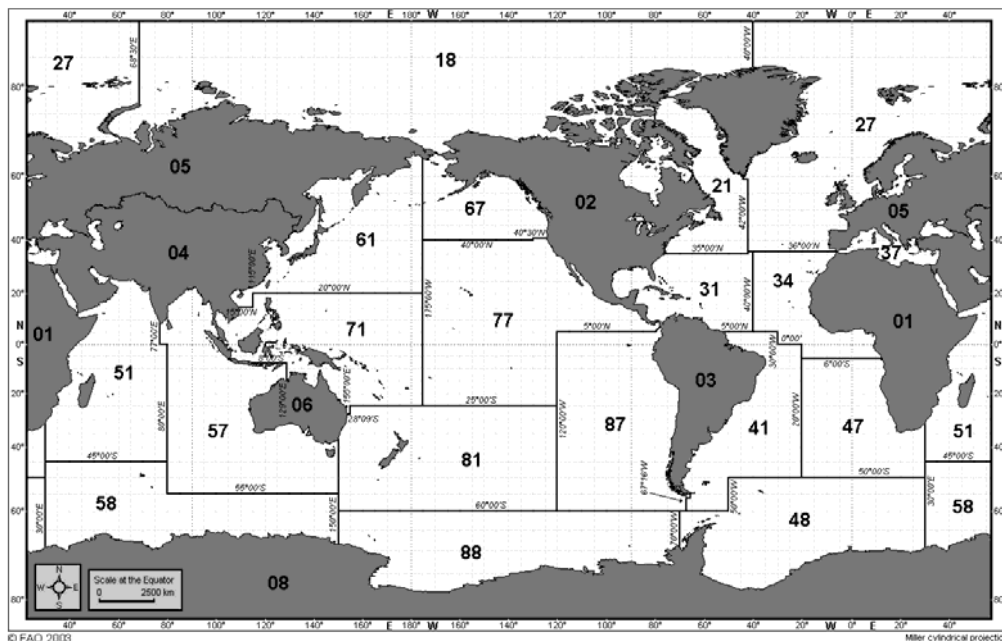


Figure 3. FAO fishing areas.

Key: *Lamna nasus* is reported from the fishing areas underlined below.

- | | |
|--------------------------------------------|-------------------------------------|
| 01 - Africa-Inland Water | <u>51 - Indian Ocean, Western</u> |
| 02 - America-Inland Water | <u>57 - Indian Ocean, Eastern</u> |
| 03 - America, South-Inland Water | <u>58 - Indian Ocean, Antarctic</u> |
| 04 - Asia-Inland Water | 61 - Pacific, Northwest |
| 05 - Europe-Inland Water | 67 - Pacific, Northeast |
| 06 - Oceania-Inland Water | 71 - Pacific, Western Central |
| <u>21 - Atlantic, Northwest</u> | 77 - Pacific, Eastern Central |
| <u>27 - Atlantic, Northeast</u> | <u>81 - Pacific, Southwest</u> |
| <u>31 - Atlantic, Western Central</u> | <u>87 - Pacific, Southeast</u> |
| <u>34 - Atlantic, Eastern Central</u> | 88 - Pacific, Antarctic |
| <u>37 - Mediterranean & Black seas</u> | |
| 41 - Atlantic, Southwest | |
| 47 - Atlantic, Southeast | |
| <u>48 - Atlantic, Antarctic</u> | |

Table 2. *Lamna nasus* life history parameters.

Age at maturity (years)	female:	13 years (North Atlantic); 15–18 years (SW Pacific)	Campana <i>et al.</i> 2008; DFO 2005; Francis <i>et al.</i> 2007
	male:	8 years (North Atlantic); 8–11 years (SW Pacific)	Campana <i>et al.</i> 2008; DFO 2005; Francis <i>et al.</i> 2007
Size at maturity (total length cm)	female:	195 cm (SW Pacific), 230–260 cm (North Atlantic)	Campana <i>et al.</i> 2008; Dulvy <i>et al.</i> 2008; Francis <i>et al.</i> 2007; Francis & Duffy 2005
	male:	165 cm (SW Pacific), 180–215 cm (North Atlantic)	Campana <i>et al.</i> 2008; Dulvy <i>et al.</i> 2008; Francis <i>et al.</i> 2007
Maximum size (total length cm)	female:	302, 357 cm (N Atlantic); 240 cm (SW Pacific)	Francis <i>et al.</i> 2008; DFO 2005; Dulvy <i>et al.</i> 2008
	male:	253, 295 cm (N Atlantic); 240 cm (SW Pacific)	Francis <i>et al.</i> 2008; DFO 2005; Dulvy <i>et al.</i> 2008
Longevity (years)	>29–45 years (Northwest Atlantic); ~65 years (Southwest Pacific)		Campana <i>et al.</i> 2008; DFO 2005; Francis <i>et al.</i> 2007
Size at birth (cm)	58–77 (North Atlantic), 72–82 (Southwest Pacific)		Francis <i>et al.</i> 2008; Dulvy <i>et al.</i> 2008
Average reproductive age/ generation time	18 years (Northwest Atlantic); 26 years (Southwest Pacific)		Campana <i>et al.</i> 2008; DFO 2005; Francis <i>et al.</i> 2007
Gestation time	8–9 months		
Reproductive periodicity	Annual		
Average litter size	Four pups		
Annual rate of population increase	5–7% (unfished, North Atlantic); 2.6% (from MSY, southwestern Pacific)		Campana <i>et al.</i> 2008; Smith <i>et al.</i> 2008
Natural mortality	0.10 (immatures), 0.15 (mature males), 0.20 (mature F) (Northwest Atlantic)		Campana <i>et al.</i> 2001

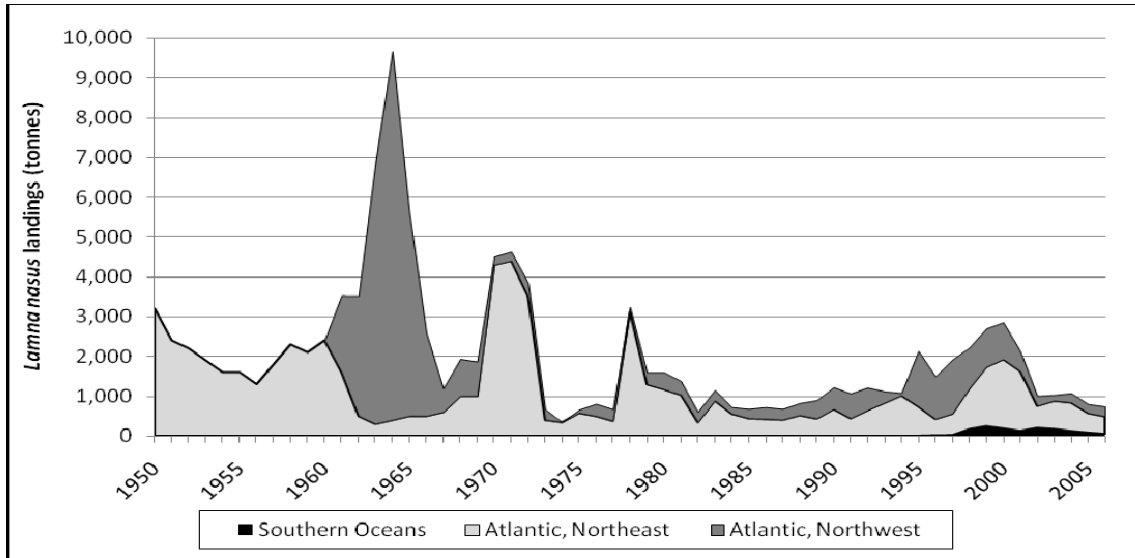


Figure 4. Global reported landings (tonnes) of *Lamna nasus* by FAO fishing area, 1950–2006. (Source: FAO FishStat)

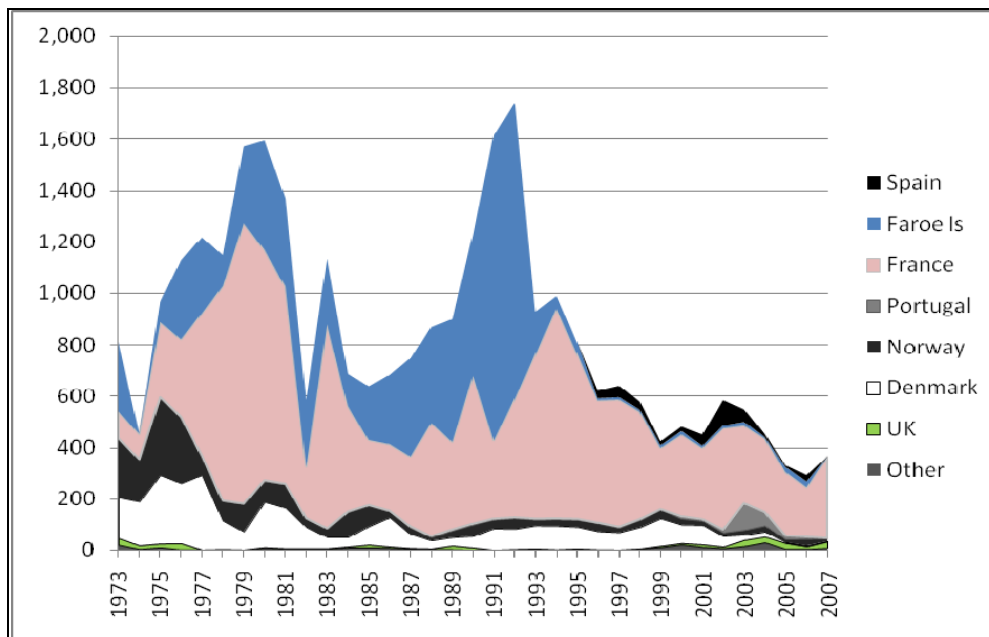


Figure 5. Northeast Atlantic landings (tonnes) of *Lamna nasus* by major fishing States, 1950–2006. (Source: ICES WGEF 2008.)

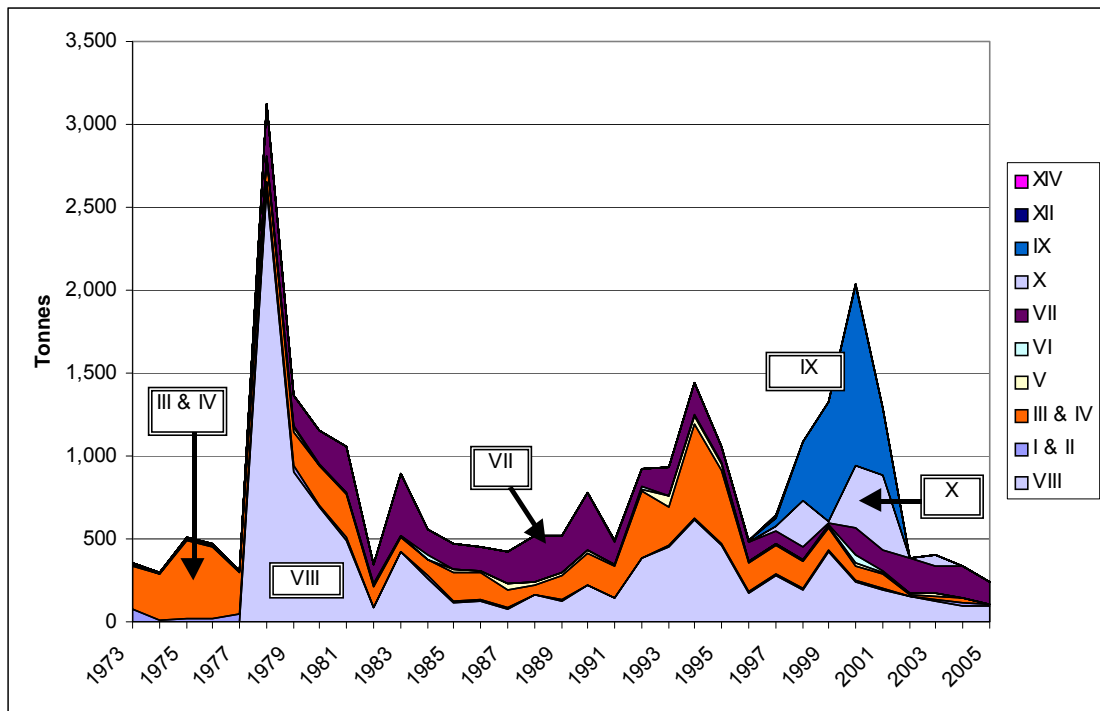


Figure 6. Landings (tonnes) of *Lamna nasus* from ICES Areas (Northeast Atlantic), 1973–2004. (Source: ICES Working Group on Elasmobranch Fishes 2006)

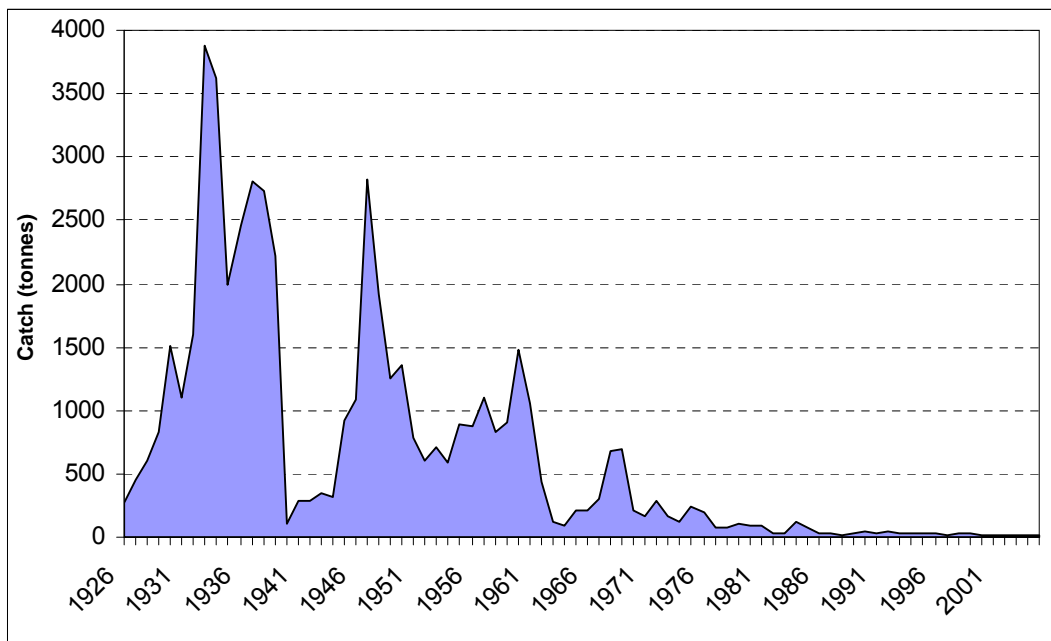


Figure 7. Landings (tonnes) of *Lamna nasus* by Norway in the Northeast Atlantic, 1926–2006. (Source: Norwegian fisheries data & ICES WGEF)

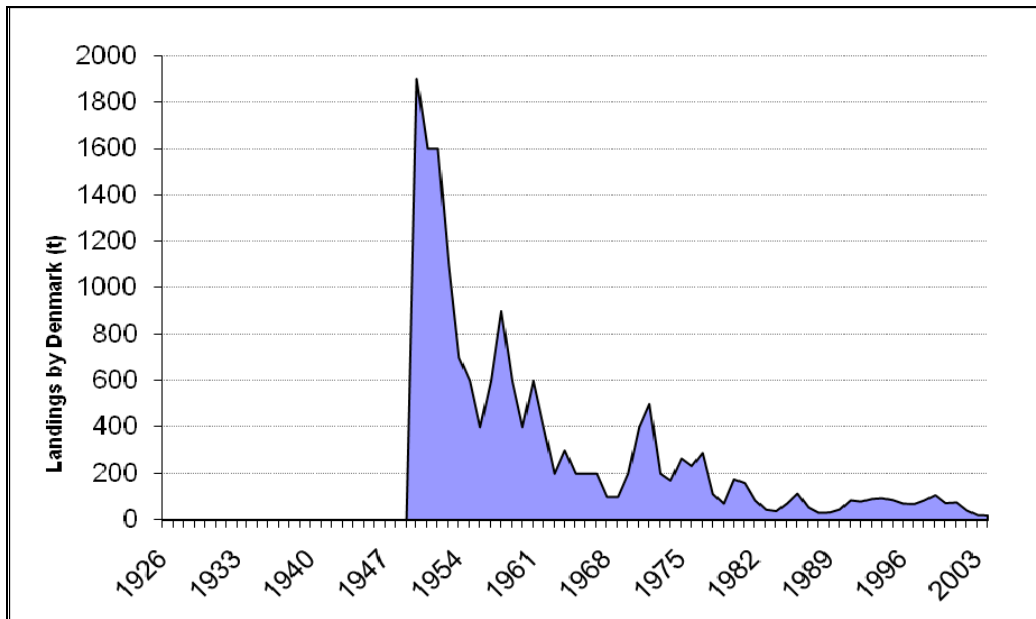


Figure 8. Landings (tonnes) of *Lamna nasus* by Denmark in the Northeast Atlantic, 1954–2004. (Source: ICES Working Group on Elasmobranch Fishes)

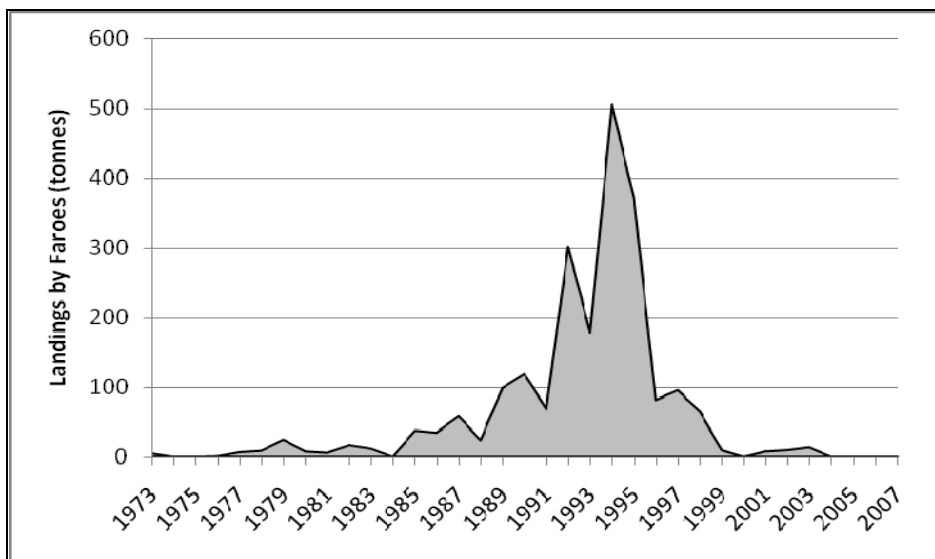


Figure 9. Landings (tonnes) of *Lamna nasus* by Faroe Islands in the Northeast Atlantic, 1973–2007. (Source: ICES WGEF and European Commission.)

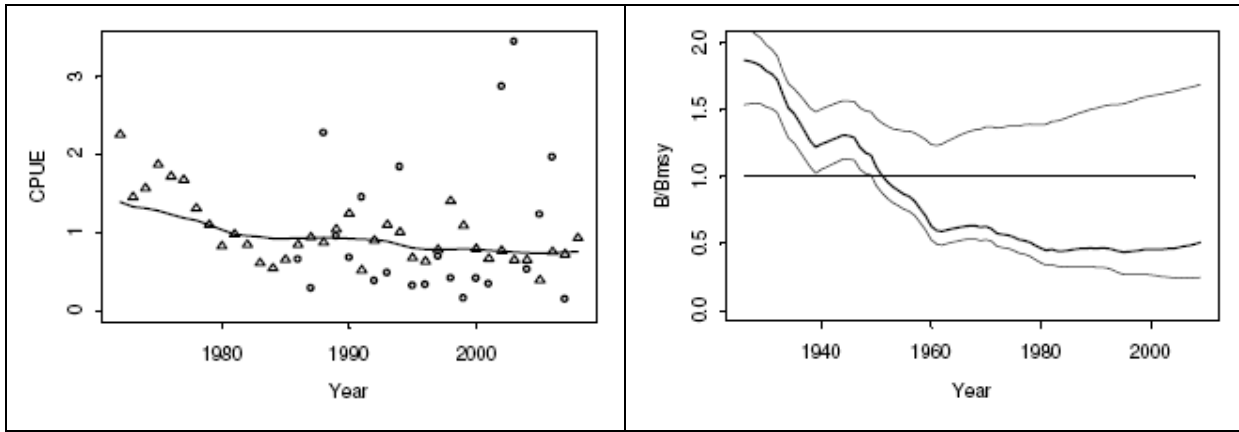


Figure 10. Results of a Bayesian Surplus Production model of the Northeast Atlantic porbeagle stock from 1929 (Source: ICCAT/ICES 2009). Left: French and Spanish catch per unit effort and fitted biomass trend. Right: biomass (B) relative to biomass at MSY (B_{msy}).

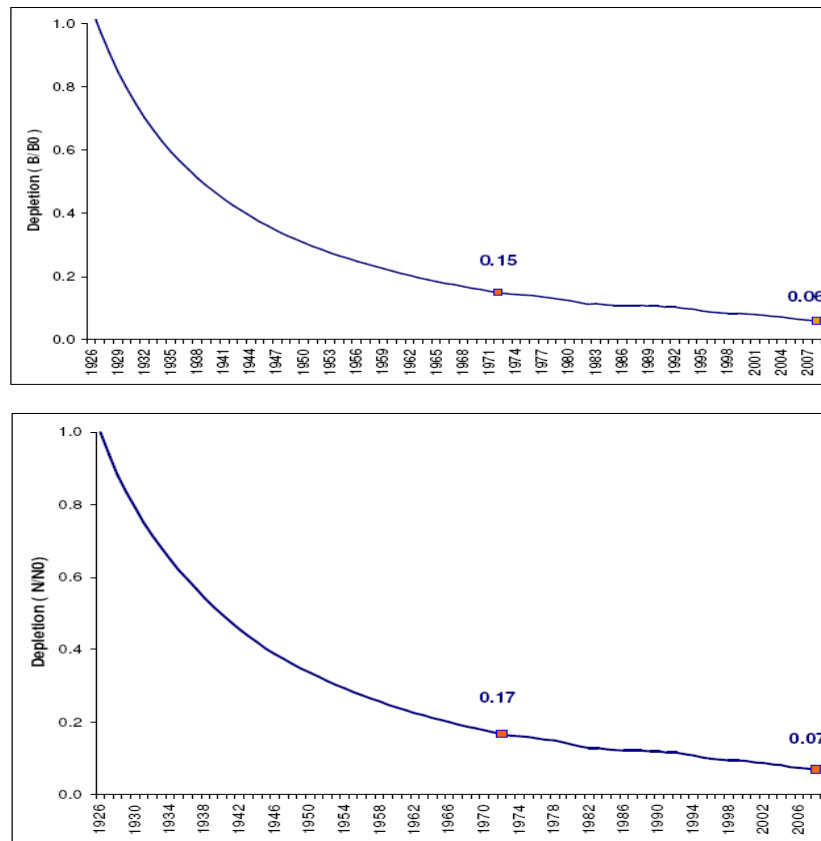


Figure 11. Depletion in total biomass (upper panel) and numbers (lower panel) for a surplus production age-structured model, assuming virgin conditions in 1926, for Northeast Atlantic porbeagle (Source: ICCAT/ICES 2009). The dots indicated on the line correspond to depletion at the beginning of the modern period (1972) and current depletion (2008).

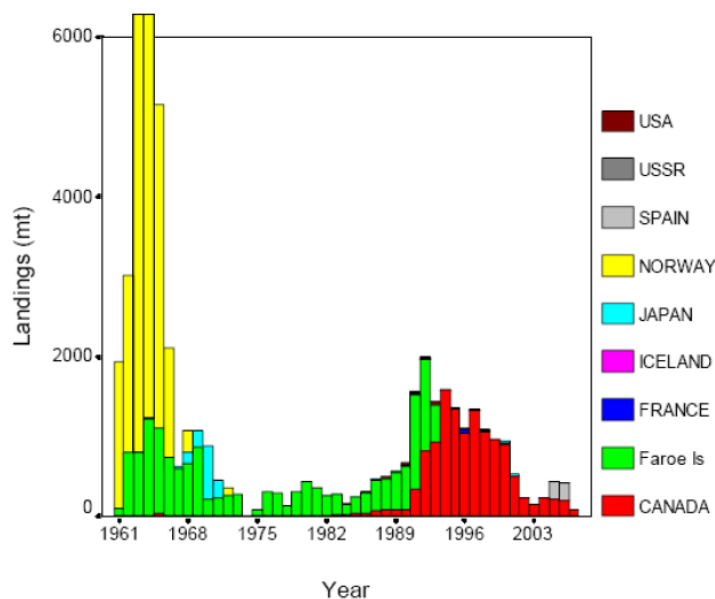


Figure 12. *Lamna nasus* landings in the Northwest Atlantic, 1961–2007 (excluding unreported high seas captures). (Stacked columns - Source: Campana and Gibson 2008)

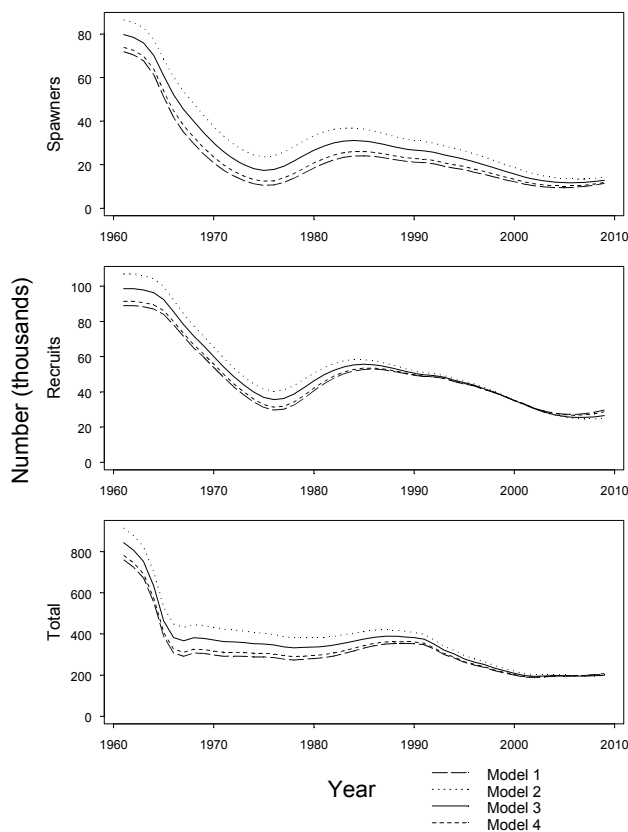


Figure 13. Comparison of the predicted time series for numbers of mature females (top), age-1 recruits (centre) and total number of *Lamna nasus* in Canadian waters, 1961–2008, from four porbeagle population models (all show similar trajectories). (Source: ICCAT/ICES 2009, updating Campana and Gibson 2008)

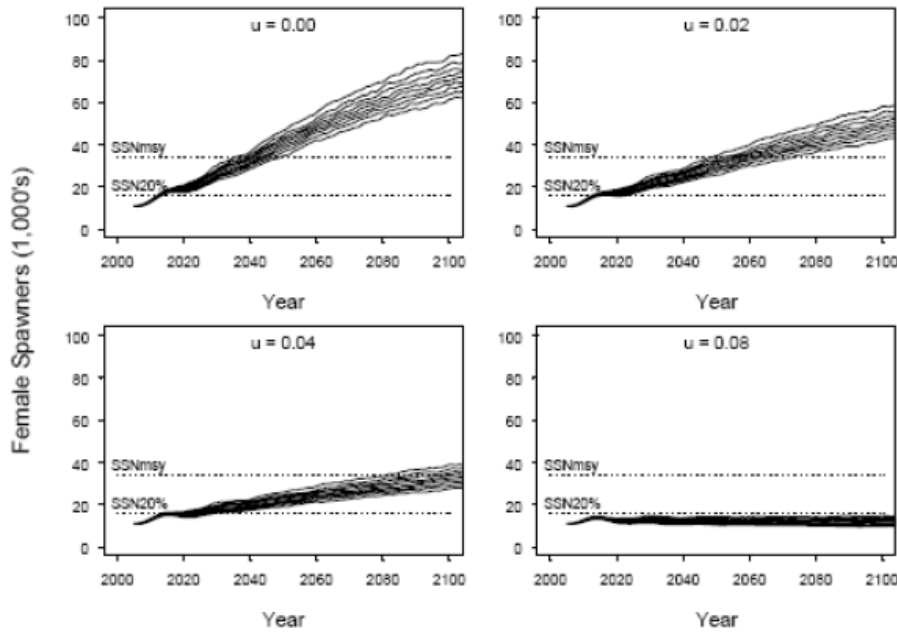


Figure 14. Predicted stochastic recovery trajectories from the population viability analysis under four different exploitation scenarios. Quantiles of population size in each year from low (bottom line = 0) to high (top line = 0.9). Time to recover at 4% exploitation rate was 30-100+yr. (Source: Campana and Gibson 2008.)

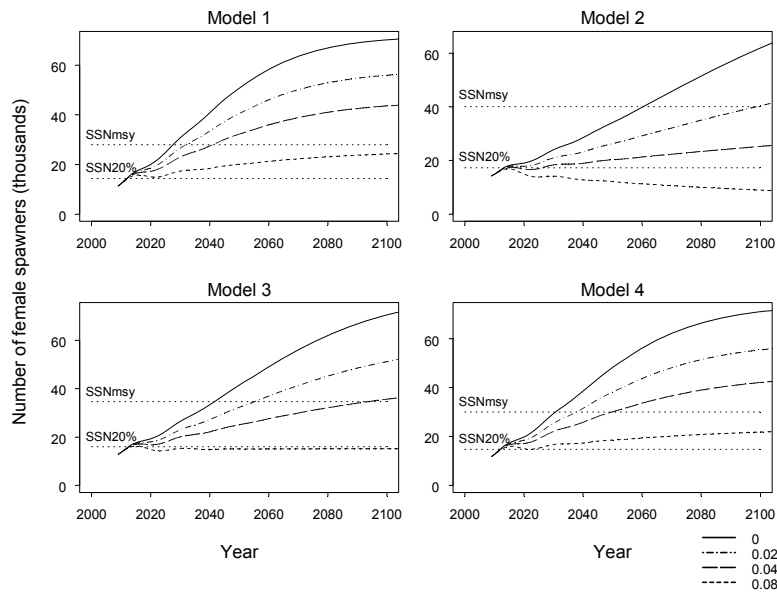


Figure 15. Predicted deterministic recovery trajectories from each of four porbeagle population models at each of four exploitation rates in the Northwest Atlantic. Quantiles of population size in each year from low (bottom line = 0) to high (top line = 0.9). All simulate populations recover at exploitation rates of less than about 4% (corresponding to a total catch of 185t). Time to recover at 4% exploitation rate was 30-100+yr. (Source: ICCAT/ICES 2009 updating Campana and Gibson 2008.)

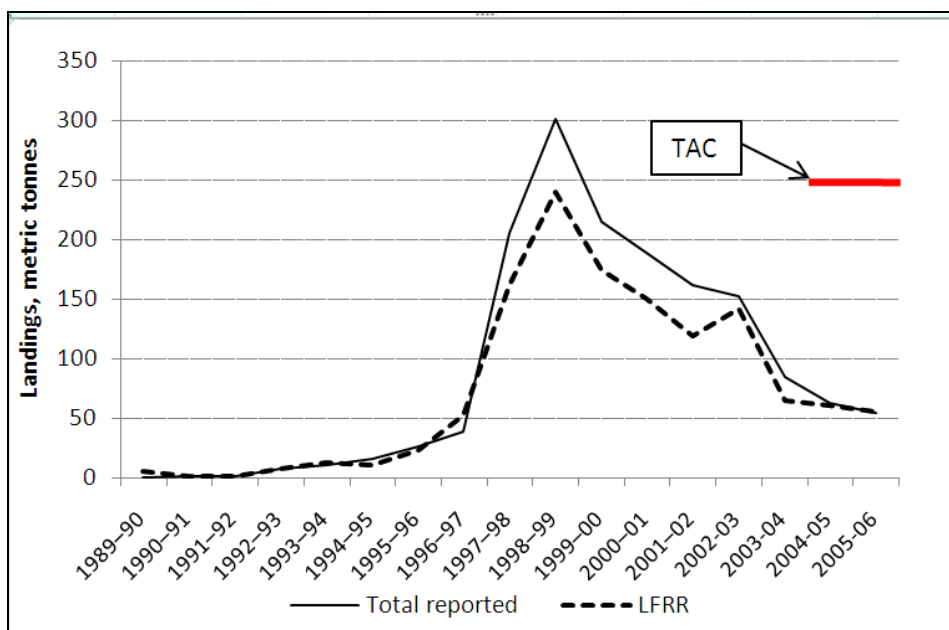


Figure 16. New Zealand commercial landings of porbeagle sharks reported by fishers and processors (LFRR), 1989/90 to 2004/05. (Source Ministry of Fisheries 2008.)

Substantial foreign landings up to about 1992–93 have not been quantified and are not included here. Domestic tuna longline fishing effort rose until 2002/03, but has fallen in recent years.

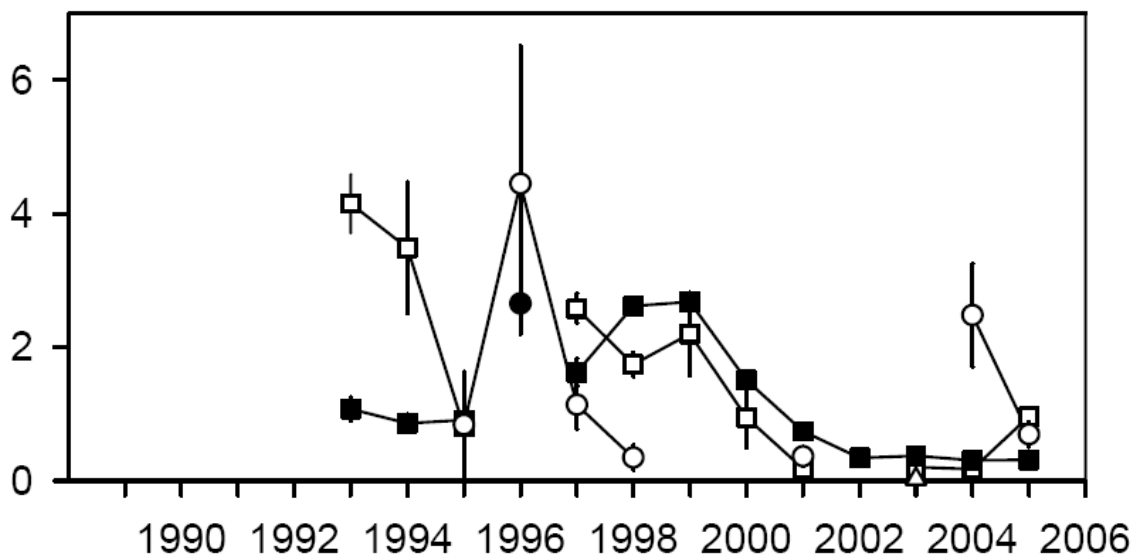


Figure 17. Unstandardised CPUE indices (number of *Lamna nasus* per 1000 hooks) for the New Zealand tuna longline fishery based on observer reports.

Years are fishing years (1993 = October 1992 to September 1993). Confidence intervals are from bootstrapped data. -■- foreign and charter fleet, southern New Zealand; -□- foreign and charter fleet, northern New Zealand; -●- domestic fleet, southern New Zealand; -○- domestic fleet, northern New Zealand. (Taken from Ministry of Fisheries (2008). Source: Griggs *et al.* 2007.)

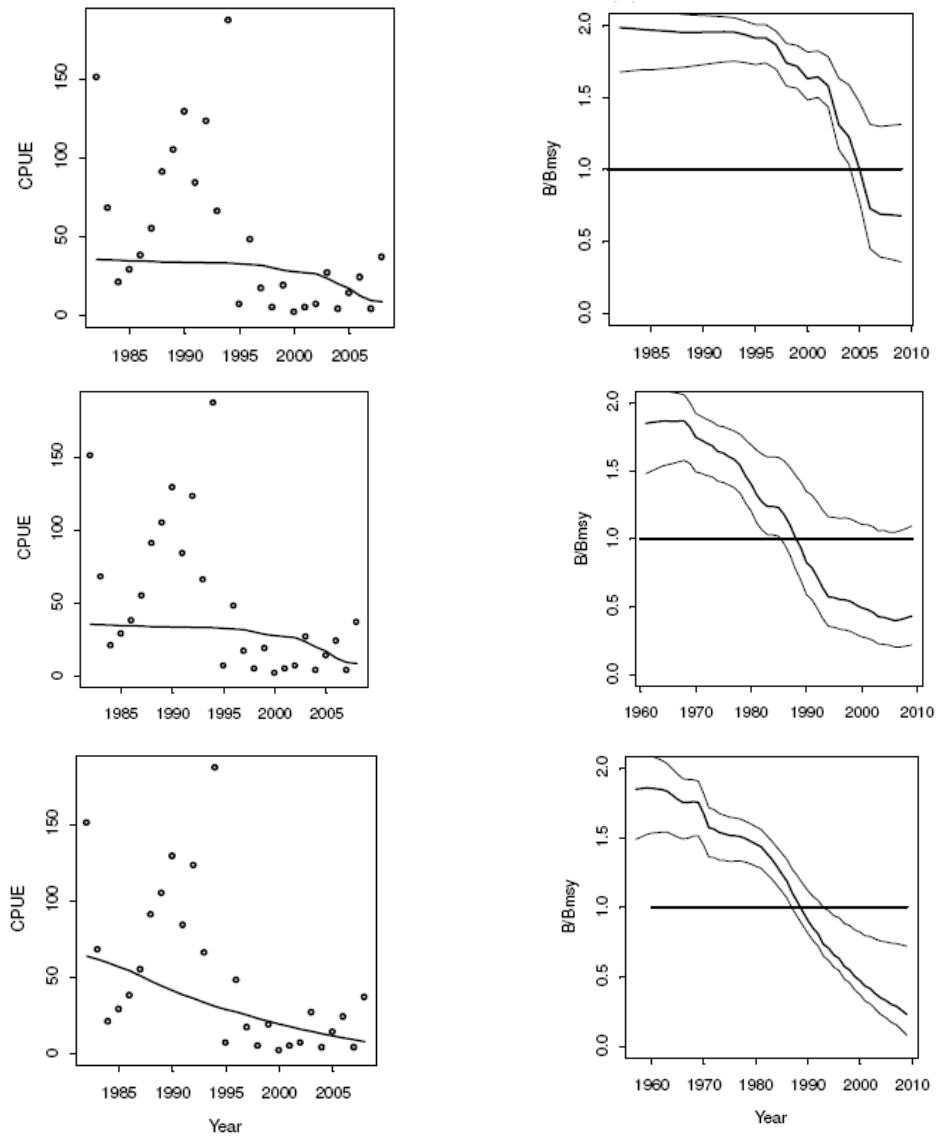


Figure 18. Results of three Bayesian Surplus Production models of Southwest Atlantic porbeagle stock (Source ICCAT/ICES 2009). Left: Uruguay catch per unit effort series and fitted biomass trend. Right: biomass (B) relative to biomass at MSY (B_{msy}).

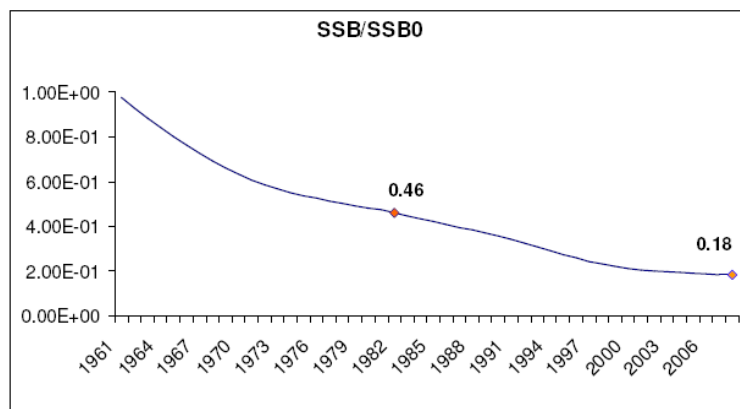


Figure 19. Depletion in spawning stock biomass for a surplus production age-structured model, assuming virgin conditions in 1961, for Southwest Atlantic porbeagle (Source: ICCAT/ICES 2009). Dots on the line correspond to levels of depletion in 1982 and 2008.

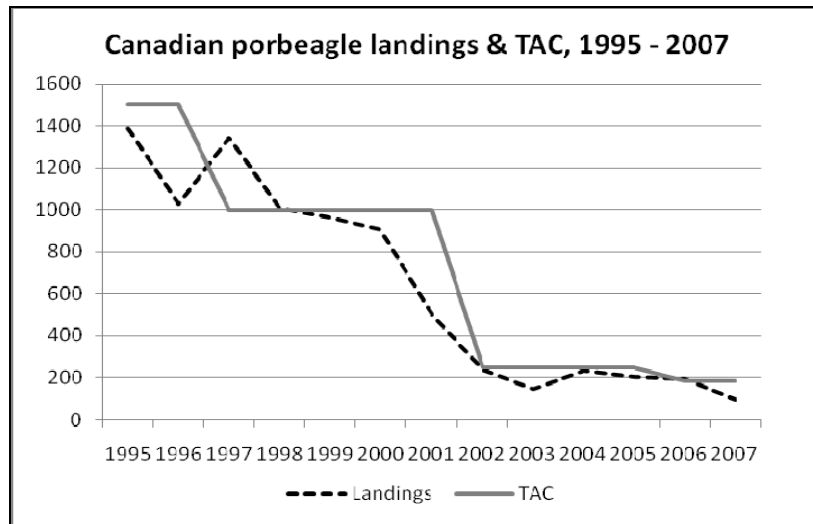


Figure 20. Canadian Atlantic landings and TAC for porbeagle shark, 1995–2007.

Annex 2.

Scientific synonyms of *Lamna nasus*

(Source: FAO Species Identification Sheet 2003)

- *Squalus glaucus* Gunnerus, 1768 (not *S. glaucus* Linnaeus, 1758 = *Prionace glauca*);
- *Squalus cornubicus* Gmelin, 1789;
- *Squalus pennanti* Walbaum, 1792 (also *Lamna pennanti*, Desvaux, 1851);
- *Squalus monensis* Shaw, 1804;
- *Squalus cornubiensis* Pennant, 1812;
- *Squalus selanonus* Walker, in Leach, 1818;
- *Selanonius walkeri* Fleming, 1828;
- *Lamna punctata* Storer, 1839;
- *Oxyrhina daekayi* Gill, 1862;
- *Lamna philippi* Perez Canto, 1886;
- *Lamna whitleyi* Philipps, 1935.

Annex 3.

Range States and Areas where *Lamna nasus* has been recorded

(Source Compagno 2001)

Albania	Egypt	Morocco
Algeria	Faeroe Islands	Netherlands
Antarctica	*Falkland/Malvinas Islands	New Zealand
Argentina	Finland	Norway
Australia (New South Wales; Queensland; South Australia; Tasmania; Victoria; Western Australia)	France	Portugal
Azores Is. (Portugal)	France (Corse)	Russian Federation
Belgium	French Polynesia	Slovenia
Bermuda	Germany	South Africa
Brazil	Gibraltar	South Georgia and the South Sandwich Islands
Canada (New Brunswick; Newfoundland; Nova Scotia; Prince Edward Island)	Greece (East Aegean Is.; Kriti)	Spain
Canary Islands	Greenland	Sweden
Cape Verde	Iceland	Syria
Channel Islands (UK)	Ireland	Tunisia
Chile	Isle of Man	Turkey
Croatia	Israel	United Kingdom (England, Wales, Scotland, Northern Ireland)
Cyprus	Italy (Sardinia; Sicilia)	United States of America (Maine; Massachusetts; New Jersey; New York; Rhode Island; South Carolinas?)
Denmark	Kerguelen Is.	Uruguay
	Lebanon	Yugoslavia
	Libya	
	Madeira Islands (Portugal)	
	Malta	
	*Malvinas/Falkland Islands	
	Monaco	

FAO Fisheries Areas:

21, 27, 31, 34, 37, 41, 47, 48, 51, 57, 58, 81 and 87 (see Figure 3).

Oceans:

Northwest Atlantic: Greenland, Canada, United States, and Bermuda.

Northeast Atlantic: Iceland and western Barents Sea to Baltic, North and Mediterranean Seas, including Russia, Norway, Sweden, Denmark, Germany, Holland, United Kingdom, Ireland, France, Portugal, Spain, and Gibraltar; Mediterranean (not Black Sea); Morocco, Madeira, and Azores.

Southern Atlantic: southern Brazil and Uruguay to southern Argentina; Namibia and South Africa.

Indo-West Pacific: South-central Indian Ocean from South Africa east to between Prince Edward and Crozet Islands, between Kerguelen and St. Paul Islands, and southern Australia, New Zealand. Sub Antarctic waters off South Georgia, Marion, Prince and Kerguelen Islands.

Eastern South Pacific: southern Chile to Cape Horn.

* A dispute exists between the Governments of Argentina and the United Kingdom of Great Britain and Northern Ireland concerning sovereignty over the Falkland Islands/Islands Malvinas

Annex 4

EU CONSIDERATIONS ON using the CRITERIA FOR AMENDMENT OF
APPENDICES I AND II for COMMERCIALY EXPLOITED AQUATIC SPECIES
with regard to *Lamna nasus*

CITES Standing Committee 58 [SC58 Sum. 7 (Rev. 1) point 43 (09/07/2009)] has asked Parties, as they prepare for CoP15, to clearly define in their listing proposals how they have interpreted and applied Resolution Conf. 9.24 (Rev. CoP14).

Interpreting the Text of Annex 2 a with regard to *Lamna nasus*

The proponents have carefully considered the FAO's views on how CITES Parties should interpret the criteria in Resolution Conf. 9.24 (SC 58 Inf. 6), and the interpretation suggested by the CITES Secretariat (SC 58 Doc. 43). In the view of the proponents, the definition of the term "decline" given in Annex 5 of Resolution Conf. 9.24 and the Footnote "Application of decline for commercially exploited aquatic species" is clearly relevant for Criterion A of Annex 2 a, and we have interpreted it according to the guidelines and the footnote.

Criterion A of Annex 2 a states that a species should be included in Appendix II "to avoid it becoming eligible for inclusion in Appendix I in the near future". According to Article II Paragraph 1 of the Convention, it shall be included in Appendix I if it is "threatened with extinction". According to Annex 1 of Res. Conf. 9.24 (Biological criteria for Appendix I), a species is threatened with extinction if it meets or is likely to meet at least one of the criteria A, B or C, with C specifying "a marked decline in the population size in the wild [...]". This term "decline" used in Criterion C for Appendix I is then further defined in Annex 5 (Definitions, explanations and guidelines) and specified for commercially exploited aquatic species in the abovementioned footnote.

By contrast, Criterion B of Annex 2 a does not refer to Appendix I. Criterion B states that a species should be included in Appendix II "to ensure that the harvest of specimens from the wild is not reducing the wild population to a level at which its survival might be threatened by continued harvesting or other influences." Whether the Appendix I definition of "decline" is relevant for Criterion B has been subject to different interpretations. The proponents do not wish to enter into this general discussion through the present document. However, the proponents would like to underline that Criterion B represents the outcome of a rewording of the previous version of Paragraph B of Annex 2a in Res. Conf. 9.24, which reads as follows:

"It is known, or can be inferred or projected, that harvesting of specimens from the wild for international trade has, or may have, a detrimental impact on the species by either

- i) exceeding, over an extended period, the level that can be continued in perpetuity; or*
- ii) reducing it to a population level at which its survival would be threatened by other influences."*

In the criteria working group at Johannesburg (20th Animals Committee, 2004) it was recognized that Criterion B of Annex 2 a in its current version encompasses both meanings of the abovementioned original text, i.e. paragraph i) and ii). With respect to paragraph ii) of the original criterion, decline is relevant with respect to the special case of reducing a population to a level at which depensation might occur. Paragraph i) of the original criterion is a reference to long-term unsustainable harvesting that is known or might be inferred or projected and to the detrimental impact that such harvesting has, or may have, on the species.

This represented the understanding of European Community Parties when the revised criteria were adopted, and the proponents feel that this remains a valid interpretation of this criterion.

Resolution Conf. 9.24 (Rev. CoP 14) also recognizes the importance of the application of the precautionary approach in cases of uncertainty and indicates that the definitions, explanations and guidelines provided in Annex 5 should be interpreted in a flexible manner, taking account of the specific features of each species considered. This was highlighted by the Standing Committee at its 58th meeting, and the proponents have interpreted the Resolution accordingly in their listing proposal for *Lamna nasus*.

On this basis, with regard to the relevant stocks of *Lamna nasus* referred to in the proposal, Criterion B of Res. Conf. 9.24 Annex 2a is regarded to be met because:

- This species is of high biological vulnerability, falling within FAO's lowest productivity category, and takes decades to recover from depletion, even under fisheries management;
- Exploitation in target fisheries is driven primarily by international trade demand for this species' meat, while fins enter international trade from target and bycatch fisheries;
- Stock assessments identify serious impacts of exploitation in the North Atlantic and Southwest Atlantic (possibly extending into Southeast Pacific), where populations depleted by target and bycatch fisheries qualify for listing in the CITES Appendices;
- Data are lacking on most southern hemisphere stocks, but these populations are of lower biological productivity, even more vulnerable to depletion than northern stocks, and are also exploited by fisheries;
- *Lamna nasus* is taken in high seas IUU fisheries, which undermine conservation measures adopted by coastal fishing states;
- Management of all stocks is a high priority. Regulation of international trade through CITES listing can supplement traditional management measures, thus providing a significant contribution to the conservation of this species.

Annex 5

References

- Acuña, E., Villarroel, J.C. y Grau, R. 2002. Fauna Ictica Asociada a la Pesquería de Pez Espada (*Xiphias gladius* Linnaeus). *Gayana (Concepc.)*, 66(2):263–267.
- Anonymous, 2008. Results of the International Expert Workshop on CITES Non-Detriment Findings. Cancun, Mexico, November 17th to 22nd, 2008. [http://www.conabio.gob.mx/institucion/cooperacion_internacional/TallerNDF/ Links-Documentos/WG-CS/WG8-Fishes/WG8-FR.pdf](http://www.conabio.gob.mx/institucion/cooperacion_internacional/TallerNDF/Links-Documentos/WG-CS/WG8-Fishes/WG8-FR.pdf)
- Biseau, A. 2006. Untitled summary of french porbeagle fisheries and market data. Working Document, ICES Working Group on Elasmobranch Fishes.
- Bonfil, R. 1994. Overview of world elasmobranch fisheries. *FAO Fisheries Technical Paper* No. 341 119 pp.
- Buencuerpo, V., Rios, S., Moron, J. 1998. Pelagic sharks associated with the swordfish, *Xiphias gladius*, fishery in the eastern North Atlantic Ocean and the Strait of Gibraltar. *Fishery Bulletin* (96): 667–685
- CCAMLR. 2006. Conservation of sharks. Conservation Measure 32-18, 2006. At www.ccamlr.org. Accessed 23 March 2009.
- Campana, S., L. Marks., Joyce, W., Hurley, P., Showell, M., and Kulka, D. 1999. An analytical assessment of the porbeagle shark (*Lamna nasus*) population in the northwest Atlantic. Canadian Science Advisory Secretariat. CSAS. Res. Doc.99/158.
- Campana, S., Marks, L., Joyce, W. and Harley, S. 2001. Analytical assessment of the porbeagle (*Lamna nasus*) population in the Northwest Atlantic, with estimates of long-term sustainable yield. Canadian Science Advisory Secretariat. CSAS Res. Doc. 2001/067. 17 pp.
- Campana, S.E. and W.N. Joyce. 2004. Temperature and depth associations of porbeagle shark (*Lamna nasus*) in the northwest Atlantic. *Fish. Oceanogr.* 13:52–64.
- Campana S. and J. Gibson. 2008. Catch and Stock Status of Porbeagle Shark (*Lamna nasus*) in the Northwest Atlantic to 2007, NAFO Doc. 08/36.
- Compagno, L.J.V. 2001. Sharks of the World. Volume 2. Bullhead, mackerel and carpet sharks (Heterodontiformes, Lamniformes and Orectolobiformes). An annotated and illustrated catalogue of the shark species known to date. *FAO Species Catalogue for Fisheries Purposes* (1): i–v, 1–269.
- COSEWIC 2004. COSEWIC assessment and status report on the porbeagle shark *Lamna nasus* in Canada. Committee on the Status of Endangered Wildlife in Canada. Ottawa. viii + 43 pp. (www.sararegistry.gc.ca/status/status_e.cfm).
- De la Serna, J.M., Valeiras, J., Ortiz, J.M., Macias D., 2002. Large Pelagic sharks as by-catch in the Mediterranean Swordfish Longline Fishery : some biological aspects. NAFO SCR Doc.02/137 Serial No. N4759.
- Deynat, P. in prep. Guide de détermination des nageoires de requins. Espèces vulnérables, en danger et en danger critique de l'extinction. WWF France et TRAFFIC.
- DFO. 2001a. Porbeagle shark in NAFO subareas 3–6. *Scientific Stock Status Report*. B3-09. 9 pp.
- DFO. 2001b. Canadian Atlantic Pelagic Shark Integrated Fishery Management Plan, 2000–2001. Pp. 1–72.
- DFO, 2005a. Stock assessment report on NAFO Subareas 3–6 porbeagle shark. *CSAS Science Advisory Report* 2005/044.
- DFO, 2005b. Recovery Assessment Report on NAFO Subareas 3–6 Porbeagle Shark. *CSAS Science Advisory Report* 2005/043.

- DFO 2006. Potential Socio-economic Implications of Adding Porbeagle Shark to the List of Wildlife Species at Risk in the *Species at Risk Act* (SARA). Fisheries and Oceans Canada, Policy and Economics Branch – Maritimes Region, Dartmouth, Nova Scotia.
- Domingo, A. , O. Mora y M. Cornes. 2001. Evolución de las capturas de elasmobranquios pelágicos en la pesquería de atunes de Uruguay, con énfasis en los tiburones azul (prionace glauca), moro (Isurus oxyrinchus) y porbeagle (*Lamna nasus*). Col. Vol. Sci. Pap. ICCAT 54(4): 1406–1420.
- Domingo, A. 2000. Los Elasmobranquios Pelágicos Capturados por la flota de longline Uruguay. In: M. Rey (Editor). Consideraciones Sobre la Pesca Incidental Producida por la Actividad de la Flota Atunera Dirigida a Grandes Pelágicos. “Plan De Investigación Pesquera”. Inape – Pnud Uru/92/003.
- FAO. 2001. Report of the second technical consultation of the CITES criteria for listing commercially exploited aquatic species. FAO Fisheries Report No. 667. FAO, Rome.
- FAO. 2007. Report of the Second FAO Ad Hoc Expert Advisory Panel for the Assessment of Proposals to Amend Appendices I and II of CITES Concerning Commercially-exploited Aquatic Species, Rome, 26-30 March 2007. FAO Fisheries Report No. 833. FIMF/R833, Rome, Italy.
- FAO FIGIS. undated. *Lamna nasus* Species Fact Sheet. In: A world overview of species of interest to fisheries. FIGIS Species Fact Sheets. SIDP -Species Identification and Data Programme. FAO–FIGIS. <<http://www.fao.org/figis/servlet/species?fid=2798>>, downloaded in August 2009.
- FAO FishStat.2009 Global Production Fisheries Statistics. 1950–2008 data downloaded in 2009. <http://www.fao.org/fishery/statistics/global-production/en>
- Ferretti, F. R. A. Myers, F, Serena and H. K. Lotze. 2008. Loss of Large Predatory Sharks from the Mediterranean Sea. *Conservation Biology*. doi: 10.1111/j.1523-1739.2008.00938.x.
- Fischer, W., Bauchot, M.-L. and Schneider, M.-L 1987. *Fiches FAO d'identification des espèces pour les besoins de la pêche. Méditerranée et Mer Noire*. Zone de peche 37. Volume 2. Vertébrés. FAO, Rome. 761–1530.
- Fishery Agency of Japan. 2008. Salmon Shark *Lamna ditropis*; Porbeagle Shark *Lamna nasus*, Pacific, Atlantic and Indian Oceans. In: The current status of international fishery stocks (summarised edition). Pp. 82–83. Fishery Agency, Japan.
- Fishery Agency of Japan. 2004. Salmon Shark *Lamna ditropis*; Porbeagle Shark *Lamna nasus*, Pacific, Atlantic and Indian Oceans. In: The current status of international fishery stocks (summarised edition). Pp. 82–83. Fishery Agency, Japan.
- Fleming, Elizabeth. H. and Papageorgiou, P.A. 1997. *Shark fisheries and trade in Europe*. TRAFFIC Europe. 78 pp.
- Fong, Q.S.W. and J.L. Anderson (1998). Assessment of Hong Kong shark fin trade. Department of Environmental and Natural Resource Economics, University of Rhode Island, Kingston, 9 pp.
- Francis, M.P., S.E. Campana, and C.M. Jones. 2007. Age under-estimation in New Zealand porbeagle sharks (*Lamna nasus*): is there an upper limit to ages that can be determined from shark vertebrae? *Marine and Freshwater Research*, 2007, 58, 10–23.
- Francis, M. P., Natanson, L. J. and Campana, S. E. 2008: Porbeagle (*Lamna nasus*). In: Pikitch, E. K. and M. Camhi (Eds). *Sharks of the open ocean*. Blackwell Scientific Publications.
- García Núñez, N.E. 2008. Sharks: Conservation, Fishing and International Trade. Bilingual edition. Dirección General para la Biodiversidad. Ministerio de Medio Ambiente, y Medio Rural y Marino, Madrid. 111 pp. <http://www.cites.org/common/com/AC/24/EF24i-05.pdf>
- Gauld, J.A. (1989). Records of porbeagles landed in Scotland, with observations on the biology, distribution and exploitation of the species. *Scottish Fisheries Research Report* 45, ISSN 0308 8022. 15 pp.
- Gibson, A.J. and S. E. Campana. 2005. Status and recovery potential of porbeagle shark in the Northwest Atlantic. CSAS Res. Doc. 2005/53. 79pp.

- Greig, T.W., Moore, K.M., Woodley, C.M., and Quattro, J.M. 2005. Gene sequences useful for identification of western North Atlantic shark species. *Fishery Bulletin* 103(3) 516–525.
- Hazin, F., M. Broadhurst, A. Amorim, C. Arfelli and A. Domingo. 2008. Catch of pelagic sharks by subsurface longline fisheries in the South Atlantic Ocean: A review of available data with emphasis on Uruguay and Brazil In: “Sharks of the open Ocean” M. Camhi and E. Pikitch (Eds.) Blackwell Scientific, New York.
- ICCAT/ICES 2009. Report of the 2009 porbeagle stock assessments meeting, (Copenhagen, Denmark, June 22 to 27, 2009). <http://www.iccat.int/en/meetingscurrent.htm> downloaded 14 August 2009.
- ICES WGEF. 2008. Report of the Working Group on Elasmobranch Fishes. ICES, Denmark.
- ICES. 2005. Report of the ICES Advisory Committee on Fishery Management. Copenhagen, Denmark.
- INIDEP. 2009. Análisis de las capturas de *Squalus acanthias* y *Lamna nasus* en embarcaciones congeladoras y factorías (convencional y surimera) con observadores a bordo. Periodo 2003 - 2006. 5th January 2009, pp. 12
- Jensen, C. F., L.J. Natanson, H.L. Pratt, N.E. Kohler, and S.E. Campana. 2002. The reproductive biology of the porbeagle shark, *Lamna nasus*, in the western North Atlantic Ocean. *Fish. Bull.* 100:727–738.
- Joyce, W., S.E. Campana, L.J. Natanson, N.E. Kohler, H.L. Pratt, and C.F. Jensen. 2002. Analysis of stomach contents of the porbeagle shark (*Lamna nasus*) in the northwest Atlantic. *ICES J. Mar. Sci.* 59:1263–1269.
- Kohler NE, Turner PA 2001. Shark tagging: A review of conventional methods and studies. *Environmental Biology of Fishes* 60 (1–3): 191–223.
- Kohler, N.E., P.A. Turner, J.J. Hoey, L.J. Natanson, and R. Briggs. 2002. Tag and recapture data for three pelagic shark species, blue shark (*Prionace glauca*), shortfin mako (*Isurus oxyrinchus*), and porbeagle (*Lamna nasus*) in the North Atlantic Ocean, ICCAT Collective Volume of Scientific Papers SCRS/2001/064 1231–1260.
- Lack, M. (2006). Conservation of Spiny Dogfish *Squalus acanthias*: A Role for CITES? TRAFFIC Oceania.
- Lallemand-Lemoine, L. 1991. Analysis of the French fishery for porbeagle *Lamna nasus* (Bonnaterre, 1788). ICES-CM-1991/G:71, 10 pp.
- Marconi, M., De Maddalena, A. 2001. On the capture of a young porbeagle, *Lamna nasus* (Bonnaterre, 1788), in the western Adriatic Sea. *Annales, Ser.hist.nat.* 11, 2 (25): 179–184
- Matsumoto, H. 2005, Report of observer program for Japanese tuna longline fishery in the Atlantic Ocean from August 2004 to January 2005, Col. Vol. Sci. Rap. ICCAT, 59(2): 663–681).
- Matsunaga, H. and H. Nakano 2002. Preliminary results of standardized CPUE for porbeagles caught by Japanese longline fishery in the Atlantic Ocean. Col. Vol. Sci. Pap. ICCAT, 54(4); 1381–1385. Available at http://www.iccat.es/Documents/CVSP/CV054_2002/no_4/CV054041381.pdf
- Matsunaga, H. and H., Nakano 2005. Estimation of shark catches by Japanese tuna longline vessels in the Atlantic Ocean. Col. Vol. Sci. Pap. ICCAT 58(3): 1096–1105. Available at http://www.iccat.es/Documents/CVSP/CV058_2005/no_3/CV058031096.pdf.
- McCoy, M.A. and H. Ishihara. 1999. *The Socio-economic Importance of Sharks in the U.S. Flag Areas of the Western and Central Pacific* (Administrative Report AR-SWR-99-01), prepared for U.S. Department of Commerce, National Marine Fisheries Service, Southwest Region, Long Beach, California, United States.
- Megalofonou, P., Damalas, D., Yannopoulos, C., De Metrio, G., Deflorio, M., De La Serna, J.M., Macias, D. 2000. By catches and discards of sharks in the large pelagic fisheries in the Mediterranean Sea. Final report of the Project No 97/50 DG XIV/C1, Comm. Of the Eu. Communities.
- Mejuto, J. 1985. Associated catches of sharks, *Prionace glauca*, *Isurus oxyrinchus* and *Lamna nasus*, with NW and N Spanish swordfish fishery in 1984. ICES C.M. 1985/H:42: 16pp.

- Mejuto, J. and Garcés, A. G. 1984. Shortfin mako, *Isurus oxyrinchus*, and porbeagle, *Lamna nasus*, associated with longline swordfish fishery in NW and N Spain. ICES CM 1984/G:72 Demersal Fish Committee.
- Ministry of Fisheries. 2005. New Zealand Gazette of Thursday, November 3 2005. Issue No. 184. Wellington, New Zealand.
- MFSC, 2008. Ministry of Fisheries, Science Group (Comps.). 2008. Report from the Mid-Year Fishery Assessment Plenary, November 2008: stock assessments and yield estimates. (Unpublished report held in NIWA Greta Point Library, Wellington, New Zealand).
- Ministry of Fisheries, Science Group (Comps.). 2006. Report from the Fishery Assessment Plenary, May 2006: stock assessments and yield estimates. 875pp. (Porbeagle on pp. 592–596.) Unpublished report held in NIWA Library, Wellington, New Zealand.
- Orsi Relini L. & Garibaldi F. 2002. Pups of Lamnid sharks from the Ligurian Sea: morphological and biometrical characteristics of taxonomic value. *In* M. Vacchi, G. La Mesa, F. Serena & B. Seret (eds.) *Proc. 4th Elasm. Assoc. Meet.*, Livorno (Italy) 2000. ICRAM, ARPAT & SFI: 199.
- Pade, N., Sarginson, J., Antsalò, M., Graham, S., Campana, S., Francis, M., Jones, C., Sims, D., and Noble, L. 2006. Spatial ecology and population structure of the porbeagle (*Lamna nasus*) in the Atlantic: an integrated approach to shark conservation. Poster presented at 10th European Elasmobranch Association Science Conference. 11–12 November 2006. Hamburg, Germany.
- Rose, D.A. 1996. An overview of world trade in sharks and other cartilaginous fishes. TRAFFIC International. 106 pp.
- Rosser, A.R. & Haywood, M.J. (compilers). 2002. Guidance For CITES Scientific Authorities: Checklist to assist in making non-detriment findings for Appendix II exports. IUCN, Gland, Switzerland and Cambridge, U.K. 146pp.
- Serena, F. & Vacchi, M. 1997. Attività di studio sui grandi pesci cartilaginei dell'alto Tirreno e Mar Ligure nell'ambito del programma L.E.M. (Large elasmobranchs monitoring). *Quad. Civ. Staz. Idrobiol.* N. 22: 17–21
- Shivji, M., Clarke, S., Pank, M., Natanson, L., Kohler, N., and Stanhope, M. 2002. Rapid molecular genetic identification of pelagic shark body-parts conservation and trade-monitoring. *Conservation Biology* 16(4): 1036–1047.
- Soldo, A. & I. Jardas. 2002. Large sharks in the Eastern Adriatic. *In* M. Vacchi, G. La Mesa, F. Serena & B. Seret (eds.) *Proc. 4th Elasm. Assoc. Meet.*, Livorno 2000. ICRAM, ARPAT & SFI: 141–155.
- Sonu, S.C. 1998. Shark fisheries, trade, and market of Japan. *NOAA Technical Memorandum NMFS*.
- STECF 2006. Report of subgroup on porbeagle. European Scientific, Technical and Economic Committee on Fisheries. Brussels.
- Stevens, J.D. (1976). Preliminary results of shark tagging in the north-east Atlantic, 1972–1975. *Journal of the Marine Biological Association of the United Kingdom* 56, 929–937.
- Stevens, J.D. (1990). Further results from a tagging study of pelagic sharks in the north-east Atlantic. *Journal of the Marine Biological Association of the United Kingdom* 70, 707–720.
- Stevens, J.D., Bonfil, R., Dulvy, N.K. and Walker, P.A. 2000. The effects of fishing on sharks, rays, and chimaeras (chondrichthyans), and the implications for marine ecosystems. *ICES Journal of Marine Science*, Volume 57, Issue 3, 476–494 pp.
- Stevens, J., Fowler, S.L., Soldo, A., McCord, M., Baum, J., Acuña, E., Domingo, A. & Francis, M. 2005. *Lamna nasus*. In: IUCN 2006. *2006 IUCN Red List of Threatened Species*. <www.iucnredlist.org>.
- Stevens, J. D., and Wayte, S. E. (1999). A review of Australia's pelagic shark resources. FRDC Project No. 98/107. Fisheries Research and Development Corporation, Canberra.

- Stevens, J.D. and Wayte, S.E. 2008. The bycatch of pelagic sharks in Australia's tuna longline fisheries. In: E. Pikitch & M. Camhi (eds). *Sharks of the open ocean. Proceedings of the Monterey pelagic shark meeting Feb 1999*. Blackwell Scientific Press,
- Sullivan, K. J., P. M. Mace, N. W. M. Smith, M. H. Griffiths, P. R. Todd, M. E. Livingston, S. Harley, J. M. Key & A. M. Connell (ed.). 2005. Report from the Fishery Assessment Plenary, May 2005: stock assessments and yield estimates. Ministry of Fisheries, Wellington. 792 pp.
- Svetlov, M.F. (1978). The porbeagle, *Lamna nasus*, in Antarctic waters. *Journal of Ichthyology* 18 (5), 850–851.
- Testerman, C., Richards, V., Francis, M., Pade, N., Jones, C., Noble, L. and Shivji, M. 2007. Global phylogeography of the porbeagle shark (*Lamna nasus*) reveals strong genetic separation of northern and Southern Hemisphere populations. Abstract presented at the American Elasmobranch Society Annual Conference 2007
- Vannuccini, S. 1999. Shark utilization, marketing and trade. *FAO Fisheries Technical Paper*. No. 389. Rome, FAO. 470 pp.
- Van Wijk, E.M. and R. Williams (2003). Fishery and invertebrate by-catch from Australian fisheries for *D. eleginoides* and *C. gunnari* in Division 58.5.2. CCAMLR WG-FSA 03/73. 26 pp.
- Vas, P. and Thorpe, T. 1998. Commercial landings of sharks in South-Western England. *Shark News* 12: November 1998.