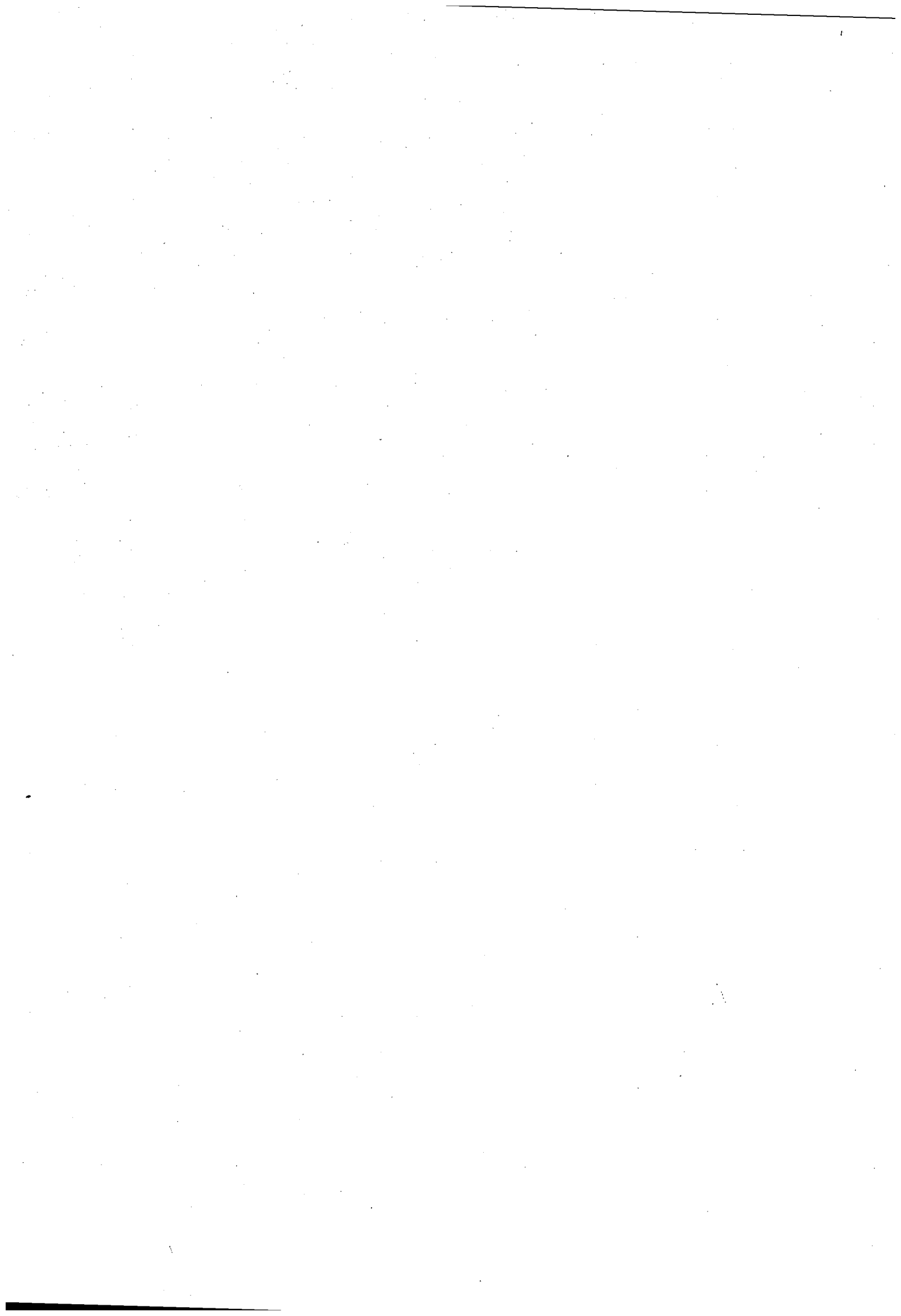


IV OTHER DOCUMENTS AND APPENDICES TO THE CONVENTION



CONVENTION ON INTERNATIONAL TRADE IN ENDANGERED SPECIES
OF WILD FAUNA AND FLORA

APPENDICES I AND II

as of 1 August 1985

INTERPRETATION

1. Species included in these appendices are referred to:
 - a) by the name of the species; or
 - b) as being all of the species included in a higher taxon or designated part thereof.
2. The abbreviation "spp." is used to denote all species of a higher taxon.
3. Other references to taxa higher than species are for the purposes of information or classification only.
4. The abbreviation "p.e." is used to denote species which are possibly extinct.
5. An asterisk (*) placed against the name of a species or higher taxon indicates that one or more geographically separate populations, subspecies or species of that species or taxon are included in Appendix I and that these populations, subspecies or species are excluded from Appendix II.
6. Two asterisks (**) placed against the name of a species or higher taxon indicate that one or more geographically separate populations, subspecies or species of that species or taxon are included in Appendix II and that these populations, subspecies or species are excluded from Appendix I.

7. The symbol (-) followed by a number placed against the name of a species or higher taxon denotes that designated geographically separate populations, subspecies, species, groups of species or families of that species or taxon are excluded from the appendix concerned, as follows:

- 101 Population of West Greenland
- 102 Populations of Bhutan, India, Nepal and Pakistan
- 103 Population of China
- 104 Panthera tigris altaica (=amurensis)
- 105 Population of Australia
- 106 Populations of Afghanistan, Bhutan, Burma, India, Nepal and Pakistan
- 107 Cathartidae
- 108 Population of the United States of America
- 109 Melopsittacus undulatus, Nymphicus hollandicus and Psittacula krameri
- 110 Population of Zimbabwe and populations of the following countries subject to the specified annual export quotas:

Cameroon	: 20	Mozambique	: 1000
Congo	: 1000	Sudan	: 5000
Kenya	: 150	United Republic of Tanzania	: 1000
Madagascar	: 1000	Zambia	: 2000
Malawi	: 500		
- 111 Populations of Australia and Papua New Guinea and population of Indonesia subject to an annual export quota of 2000
- 112 Population of Chile
- 113 Coastal population of Chile
- 114 All species which are not succulent

8. The symbol (+) followed by a number placed against the name of a species or higher taxon denotes that only designated geographically separate populations, subspecies or species of that species or taxon are included in the appendix concerned, as follows:

- +201 Population of South America
- +202 Populations of Bhutan, India, Nepal and Pakistan
- +203 All North American subspecies and population of Europe, except USSR
- +204 Populations of Cameroon and Nigeria
- +205 Population of Asia
- +206 Population of India
- +207 Population of Australia
- +208 Populations of Afghanistan, Bhutan, Burma, India, Nepal and Pakistan

- +209 Population of Mexico
- +210 Populations of Algeria, Bourkina Faso, Cameroon, the Central African Republic, Chad, Mali, Mauritania, Morocco, the Niger, Nigeria, Senegal and the Sudan.
- +211 All species of New Zealand
- +212 Population of Chile
- +213 All species of the family in the Americas
- +214 Coastal population of Chile

9. The symbol (=) followed by a number placed against the name of a species or higher taxon denotes that the name of that species or taxon shall be interpreted as follows:

- =301 Includes family Tupaiidae
- =302 Includes generic synonym Leontideus
- =303 Includes synonym Saguinus geoffroyi
- =304 Includes synonym Cercopithecus roloway
- =305 Includes synonym Colobus badius kirki
- =306 Includes synonym Colobus badius rufomitratu
- =307 Includes generic synonym Simias
- =308 Includes generic synonym Mandrillus
- =309 Includes generic synonym Rhinopithecus
- =310 Includes synonyms Bradypus boliviensis and Bradypus griseus
- =311 Includes synonym Priodontes giganteus
- =312 Includes synonym Physeter catodon
- =313 Includes synonym Eschrichtius glaucus
- =314 Includes generic synonym Eubalaena
- =315 Includes synonym Dusicyon fulvipes
- =316 Includes generic synonym Fennecus
- =317 Also referenced as Ursus thibetanus
- =318 Includes generic synonym Thalarctos
- =319 Also referenced as Aonyx microdon or as Paraonyx microdon
- =320 Includes synonyms Lutra annectens, Lutra enudris, Lutra incarum and Lutra platensis
- =321 Includes synonym Eupleres major
- =322 Also referenced as Lynx caracal, includes generic synonym Caracal
- =323 Also referenced as Lynx rufus escuinapae
- =324 Includes synonyms Equus kiang and Equus onager
- =325 Includes generic synonym Dama, includes synonym dama
- =326 Includes generic synonyms Axis and Hyelaphus
- =327 Includes synonym Bos frontalis
- =328 Includes synonym Bos grunniens

- =329 Includes generic synonym Novibos
- =330 Includes generic synonym Anoa
- =331 Includes synonym Oryx tao
- =332 Includes synonym Ovis aries ophion
- =333 Also referenced as Anas platyrhynchos laysanensis
- =334 Includes synonym Cygnus bewickii jankowskii
- =335 Includes synonyms Falco pelegrinoides and Falco babylonicus
- =336 Includes generic synonym Pipile
- =337 Includes generic synonym Mitu
- =338 Includes generic synonym Lyrurus
- =339 Also referenced as Eupodotis bengalensis
- =340 Often traded under the incorrect designation Ara caninde
- =341 Includes generic synonym Cyclopsitta
- =342 Formerly included in genus Gallirex
- =343 Also referenced as Mimizuku gurneyi
- =344 Formerly included in genus Ramphodon
- =345 Also referenced as Muscicapa ruecki
- =346 Formerly included in genus Spinus
- =347 Includes generic synonyms Nicoria and Geoemyda (part)
- =348 Also referenced in genus Testudo
- =349 Formerly included in Podocnemis spp.
- =350 Includes Alligatoridae, Crocodylidae and Gavialidae
- =351 Formerly included in Chamaeleo spp.
- =352 Includes synonym Pseudoboa cloelia
- =353 Also referenced as Hydrodynastes gigas
- =354 Formerly included in Thamnophis elegans
- =355 Includes generic synonym Megalobatrachus
- =356 Sensu D'Abbrera
- =357 Formerly included in genus Mytilus
- =358 Also referenced in genus Dysnomia
- =359 Includes generic synonym Proptera
- =360 Also referenced in genus Carunculina
- =361 Includes generic synonym Micromya
- =362 Includes generic synonym Papuina
- =363 Also referenced in genus Escobaria
- =364 Also referenced in genus Neolloydia
- =365 Also referenced as Nopalxochia macdougallii
- =366 Also referenced as Solisia pectinata
- =367 Includes subfamilies Apostasioideae and Cyripedioideae

=368 Also referenced as Lycaste skinneri var. alba

=369 Includes synonym Stangeria paradoxa

=370 Includes synonym Basiloxylon excelsum

=371 Includes synonym Welwitschia mirabilis

10. In accordance with Article I, paragraph b(iii), of the Convention, the symbol (≠) followed by a number placed against the name of a species or higher taxon included in Appendix II designates parts or derivatives which are specified in relation thereto for the purposes of the Convention as follows:

- ≠1 Designates all parts and derivatives, except:
a) seeds, spores and pollen (including pollinia); and
b) tissue cultures and flasks seedling cultures
- ≠2 Designates roots and readily recognizable parts thereof
- ≠3 Designates all parts and derivatives, except:
a) seeds, spores and pollen (including pollinia);
b) tissue cultures and flasks seedling cultures;
c) fruits and parts and derivatives thereof of naturalized or artificially propagated plants, and
d) separate stem joints (pads) and parts and derivatives thereof of naturalized or artificially propagated Opuntia spp. subgenus Opuntia
- ≠4 Designates all parts and derivatives, except:
a) seeds, spores and pollen (including pollinia);
b) tissue cultures and flasks seedling cultures; and
c) fruits and parts and derivatives thereof of naturalized or artificially propagated plants
- ≠5 Designates all parts and derivatives, except:
a) spores and pollen (including pollinia); and
b) tissue cultures and flasks seedling cultures
- ≠6 Designates all parts and derivatives, except:
a) seeds, spores and pollen (including pollinia);
b) tissue cultures and flasks seedling cultures; and
c) separate leaves and parts and derivatives thereof of naturalized or artificially propagated Aloe vera

- #7 Designates all parts and derivatives, except:
- a) seeds, spores and pollen (including pollinia);
 - b) tissue cultures and flasked seedling cultures;
 - c) cut flowers of artificially propagated plants; and
 - d) fruits and parts and derivatives thereof of artificially propagated Vanilla spp.

Appendices - Apéndices - Annexes

I

II

F A U N A

MAMMALIA

MONOTREMATA

Tachyglossidae

Zaglossus spp.

MARSUPIALIA

Dasyuridae

Sminthopsis longicaudata
Sminthopsis psammophila

Thylacinidae

Thylacinus cynocephalus p.e.

Peramelidae

Chaeropus ecaudatus p.e.
Perameles bougainville

Thylacomyidae

Macrotis lagotis
Macrotis leucura

Phalangeridae

Phalanger maculatus
Phalanger orientalis

Burramyidae

Burramys parvus

Vombatidae

Lasiorhinus krefftii

Macropodidae

Bettongia spp.
Caloprymnus campestris p.e.

Appendices - Apéndices - Annexes

I

II

Macropodidae (cont.)

Lagorchestes hirsutus
Lagostrophus fasciatus
Onychogalea fraenata
Onychogalea lunata

Dendrolagus bennettianus
Dendrolagus inustus
Dendrolagus lumholtzi
Dendrolagus ursinus

INSECTIVORA

Erinaceidae

Erinaceus frontalis

PRIMATES

PRIMATES spp. * =301

Lemuridae

Lemuridae spp.

Cheirogaleidae

Cheirogaleidae spp.

Indriidae

Indriidae spp.

Daubentoniidae

Daubentonia madagascariensis

Callithricidae

Callithrix jacchus aurita
Callithrix jacchus flaviceps
Leontopithecus spp. =302
Saguinus bicolor
Saguinus leucopus
Saguinus oedipus =303

Callimiconidae

Callimico goeldii

Appendices - Apéndices - Annexes

I

II

Cebidae

Alouatta palliata
Ateles geoffroyi frontatus
Ateles geoffroyi panamensis
Brachyteles arachnoides
Cacajao spp.
Chiropotes albinasus
Lagothrix flavicauda
Saimiri oerstedii

Cercopithecidae

Cercocebus galeritus galeritus
Cercopithecus diana =304
Colobus pennantii kirki =305
Colobus rufomitratu =306
Macaca silenus
Nasalis spp. =307
Papio leucophaeus =308
Papio sphinx =308
Presbytis entellus
Presbytis geei
Presbytis pileata
Presbytis potenziani
Pygathrix spp. =309

Hylobatidae

Hylobatidae spp.

Pongidae

Pongidae spp.

EDENTATA

Myrmecophagidae

Myrmecophaga tridactyla
Tamandua tetradactyla chapadensis

Bradypodidae

Bradypus variegatus =310

Appendices - Apéndices - Annexes

I

II

Dasypodidae

Prionomys maximus =311

PHOLIDOTA

Manidae

Manis temminckii

Manis crassicaudata

Manis javanica

Manis pentadactyla

LAGOMORPHA

Leporidae

Caprolagus hispidus

Romerolagus diazi

Nesolagus netscheri

RODENTIA

Sciuridae

Cynomys mexicanus

Lariscus hosei

Ratufa spp.

Heteromyidae

Dipodomys phillipsii phillipsii

Muridae

Leporillus conditor

Pseudomys fumeus

Pseudomys praeconis

Notomys spp.

Pseudomys shortridgei

Xeromys myoides

Zycomys pedunculatus

Chinchillidae

Chinchilla spp. +201

Appendices - Apéndices - Annexes

I

II

CETACEA

CETACEA spp. *

Platanistidae

Lipotes vexillifer
Platanista spp.

Ziphiidae

Berardius spp.
Hyperoodon spp.

Physeteridae

Physeter macrocephalus =312

Delphinidae

Sotalia spp.
Sousa spp.

Phocoenidae

Neophocaena phocaenoides
Phocoena sinus

Eschrichtidae

Eschrichtius robustus =313

Balaenopteridae

¹Balaenoptera acutorostrata ** -101
Balaenoptera borealis
Balaenoptera edeni
Balaenoptera musculus
Balaenoptera physalus
Megaptera novaeangliae

Balaenidae

Balaena spp. =314
¹Caperea marginata

¹ Entry into force on/Entrada en vigor el/Entrée en vigueur le 1.1.1986

Appendices - Apéndices - Annexes

I

II

CARNIVORA

Canidae

Canis lupus ** +202

Canis lupus * -102
Chrysocyon brachyurus
Cuon alpinus
Dusicyon culpaeus
Dusicyon griseus =315

Speothos venaticus

Vulpes cana
Vulpes zerda =316

Ursidae

Ailuropoda melanoleuca
Helarctos malayanus
Selenarctos thibetanus =317
Tremarctos ornatus

Ursus arctos * +203

Ursus arctos isabellinus
Ursus arctos nelsoni
Ursus arctos pruinosus

Ursus maritimus =318

Procyonidae

Ailurus fulgens

Mustelidae

Aonyx congica ** +204 =319

Conepatus humboldtii

Enhydra lutris nereis
Lutra felina
Lutra longicaudis =320
Lutra lutra
Lutra provocax

Lutrinae spp. *

Mustela nigripes
Pteronura brasiliensis

Appendices - Apéndices - Annexes

I

II

Viverridae

Cryptoprocta ferox
Cynogale bennettii
Eupleres goudotii =321
Fossa fossa
Hemigalus derbyanus
Prionodon linsang

Prionodon pardicolor

Hyaenidae

Hyaena brunnea

Felidae

Felidae spp. *

Acinonyx jubatus
Felis bengalensis bengalensis -103
Felis caracal ** +205 =322
Felis concolor coryi
Felis concolor costaricensis
Felis concolor cougar
Felis jacobita
Felis marmorata
Felis nigripes
Felis pardalis mearnsi
Felis pardalis mitis
Felis planiceps
Felis rubiginosa ** +206
Felis rufa escuinapae =323
Felis temmincki
Felis tigrina oncilla
Felis wiedii nicaraguae
Felis wiedii salvinia
Felis yagouaroundi cacomitli
Felis yagouaroundi fossata
Felis yagouaroundi panamensis
Felis yagouaroundi tolteca
Neofelis nebulosa

Appendices - Apéndices - Annexes

I

II

Felidae (cont.)

Panthera leo persica
Panthera onca
Panthera pardus
Panthera tigris ** -104
Panthera unca

PINNIPEDIA

Otariidae

Arctocephalus townsendi

Arctocephalus spp. *

Phocidae

Monachus spp.

Mirounga spp.

TUBULIDENTATA

Orycteropodidae

Orycteropus afer

PROBOSCIDEA

Elephantidae

Elephas maximus

Loxodonta africana

SIRENIA

Dugongidae

Dugong dugon ** -105

Dugong dugon * +207

Trichechidae

Trichechus inunguis
Trichechus manatus

Trichechus senegalensis

Appendices - Apéndices - Annexes

I

II

PERISSODACTYLA

Equidae

Equus africanus
Equus grevyi

Equus hemionus * =324

Equus hemionus hemionus
Equus hemionus khur
Equus przewalskii

Equus zebra hartmannae

Equus zebra zebra

Tapiridae

Tapiridae spp. **

Tapirus terrestris

Rhinocerotidae

Rhinocerotidae spp.

ARTIODACTYLA

Suidae

Babyrousa babyrussa
Sus salvanus

Hippopotamidae

Choeropsis liberiensis

Camelidae

Vicugna vicugna

Lama guanicoe

Cervidae

Blastocerus dichotomus
Cervus dama mesopotamicus =325
Cervus duvauceli

Cervus elaphus bactrianus

Cervus elaphus hanglu
Cervus eldi

Appendices - Apéndices - Annexes

I

II

Cervidae (cont.)

Cervus porcinus annamiticus =326
Cervus porcinus calamianensis =326
Cervus porcinus kuhli =326
Hippocamelus spp.
Moschus spp. ** +208
Muntiacus crinifrons
Ozotoceros bezoarticus

Pudu pudu

Bovidae

Addax nasomaculatus

Antilocapra americana peninsularis
Antilocapra americana sonoriensis
Bison bison athabascae
Bos gaurus =327
Bos mutus =328
Bos sauveli =329
Bubalus depressicornis =330
Bubalus mindorensis =330
Bubalus quarlesi =330

Capra falconeri chialtanensis
Capra falconeri jerdoni
Capra falconeri megaceros
Capricornis sumatraensis

Moschus spp. * -106

Pudu mephistophiles

Ammotragus lervia
Antilocapra americana mexicana

Budorcas taxicolor
Capra falconeri *

Cephalophus dorsalis
Cephalophus jentinki
Cephalophus monticola
Cephalophus ogilbyi
Cephalophus sylvicultor
Cephalophus zebra

Appendices - Apéndices - Annexes

I

Bovidae (cont.)

Gazella dama

Hippotragus niger variani

Nemorhaedus goral

Oryx dammah =331

Oryx leucoryx

Ovis ammon hodgsoni

Ovis orientalis ophion =332

Ovis vignei

Pantholops hodgsoni

Rupicapra rupicapra ornata

II

Damaliscus dorcas dorcas

Hippotragus equinus

Kobus leche

Ovis ammon *

Ovis canadensis +209

Appendices - Apéndices - Annexes

I

II

AVES

STRUTHIONIFORMES

Struthionidae

Struthio camelus +210

RHEIFORMES

Rheidae

Pterocnemia pennata

Rhea americana albescens

TINAMIFORMES

Tinamidae

Tinamus solitarius

Rhynchotus rufescens maculicollis
Rhynchotus rufescens pallescens
Rhynchotus rufescens rufescens

SPHENISCIFORMES

Spheniscidae

Spheniscus humboldti

Spheniscus demersus

PODICIPEDIFORMES

Podicipedidae

Podilymbus gigas

Appendices - Apéndices - Annexes

I

II

PROCELLARIIFORMES

Diomedidae Diomedea albatrus

PELECANIFORMES

Pelecanidae Pelecanus crispus

Sulidae Sula abbotti

Fregatidae Fregata andrewsi

CICONIIFORMES

Ciconiidae Ciconia ciconia boyciana

Jabiru mycteria

Ciconia nigra

Threskiornithidae

Geronticus eremita

Nipponia nippon

Geronticus calvus

Platalea leucorodia

Phoenicopteridae

Phoenicopteridae spp.

ANSERIFORMES

Anatidae

Anas aucklandica nesiotis

Anas aucklandica aucklandica

Anas aucklandica chlorotis

Anas bernieri

Appendices - Apéndices - Annexes

I

II

Anatidae (cont.)

Anas laysanensis =333
Anas oustaleti
Branta canadensis leucopareia

Branta sandvicensis
Cairina scutulata

Rhodonessa caryophyllacea p.e.

Branta ruficollis

Coscoroba coscoroba
Cygnus columbianus jankowskii =334
Cygnus melanocoryphus
Dendrocygna arborea
Oxyura leucocephala

Sarkidiornis melanotos

662

FALCONIFORMES

FALCONIFORMES spp. * -107

Cathartidae

Gymnogyps californianus
Vultur gryphus

Accipitridae

Aquila heliaca
Chondrohierax uncinatus wilsonii
Haliaeetus albicilla
Haliaeetus leucocephalus
Harpia harpyja
Pithecophaga jefferyi

Falconidae

Falco araea
Falco jugger
Falco newtoni aldabranus
Falco peregrinus =335
Falco punctatus
Falco rusticolus

Appendices - Apéndices - Annexes

I

II

GALLIFORMES

Megapodiidae

Macrocephalon maleo

Megapodius freycinet abbotti
Megapodius freycinet nicobariensis

Cracidae

Aburria jacutinga =336
Aburria pipile pipile =336
Crax blumenbachii
Crax mitu mitu =337
Oreophasis derbianus
Penelope albipennis

Phasianidae

Catreus wallichii
Colinus virginianus ridgwayi
Crossoptilon crossoptilon
Crossoptilon mantchuricum

Argusianus argus

Lophophorus spp.
Lophura edwardsi
Lophura imperialis
Lophura swinhoii

Cyrtonyx montezumae mearnsi -108
Cyrtonyx montezumae montezumae
Francolinus ochropectus
Francolinus swierstrai
Gallus sonneratii
Ithaginis cruentus

Polyplectron emphanum

Pavo muticus
Polyplectron bicalcaratum

Polyplectron germani
Polyplectron malacense

Appendices - Apéndices - Annexes

I

II

Phasianidae (cont.)

Syrnaticus ellioti
Syrnaticus humiae
Syrnaticus mikado

Tetrao mlokosiewiczi =338

Tetraogallus caspius
Tetraogallus tibetanus
Tragopan blythii
Tragopan caboti
Tragopan melanocephalus
Tympanuchus cupido attwateri

GRUIFORMES

Turnicidae

Turnix melanogaster

Pedionomidae

Pedionomus torquatus

Gruidae

Gruidae spp. *

Grus americana
Grus canadensis nesiotes
Grus canadensis pulla
Grus japonensis
Grus leucogeranus
Grus monacha
Grus nigricollis
Grus vipio

Rallidae

Gallirallus australis hectori

Tricholimnas sylvestris

Rhynchotidae

Rhynchotos jubatus

Appendices - Apéndices - Annexes

I

II

Otididae

Chlamydotis undulata
Choriotis nigriceps
Houbaropsis bengalensis = 339

Otis tarda

CHARADRIIFORMES

Scolopacidae

Numenius borealis
Numenius tenuirostris
Tringa guttifer

Numenius minutus

Laridae

Larus relictus

Larus brunnicephalus

COLUMBIFORMES

Columbidae

Caloenas nicobarica
Ducula mindorensis

Gallicolumba luzonica
Goura spp.

PSITTACIFORMES

Psittacidae

Amazona arausiaca
Amazona barbadensis
Amazona brasiliensis
Amazona dufresniana rhodocorytha
Amazona guildingii
Amazona imperialis
Amazona leucocephala
Amazona pretrei

PSITTACIFORMES spp. * -109

Appendices - Apéndices - Annexes

I

II

Psittacidae (cont.)

Amazona versicolor
Amazona vinacea
Amazona vittata
Anodorhynchus glaucus p.e.
Anodorhynchus leari
Ara ambigua
Ara glaucogularis =340
Ara macao
Ara rubrogenys
Aratinga guarouba
Cyanopsitta spixii
Cyanoramphus auriceps forbesi
Cyanoramphus novaezelandiae
Geopsittacus occidentalis p.e.
Neophema chrysogaster
Ognorhynchus icterotis
Opopsitta diophthalma coxeni =341
Pezoporus wallicus
Pionopsitta pileata
Psephotus chrysopterygius
Psephotus pulcherrimus p.e.
Psittacula echo
Psittacus erithacus princeps
Pyrrhura cruentata
Rynchopsitta spp.
Strigops habroptilus

CUCULIFORMES

Musophagidae

Tauraco corythaix
Tauraco porphyreolophus =342

Appendices - Apéndices - Annexes

I

II

STRIGIFORMES

STRIGIFORMES spp. *

Tytonidae

Tyto soumagnei

Strigidae

Athene blewitti
Ninox novaeseelandiae royana
Ninox squamipila natalis
Otus gurneyi =343

APODIFORMES

Trochilidae

Glaucis dohrnii =344

TROGONIFORMES

Trogonidae

Pharomachrus mocinno

CORACIIFORMES

Bucerotidae

Aceros narcondami
Buceros bicornis *
Buceros hydrocorax hydrocorax
Buceros rhinoceros rhinoceros
Rhinoplax vigil

PICIFORMES

Picidae

Campephilus imperialis
Dryocopus javensis richardsi

Picus squamatus flavirostris

Appendices - Apéndices - Annexes

I

II

PASSERIFORMES

Cotingidae

Cotinga maculata

Rupicola spp.

Xipholena atropurpurea

Pittidae

Pitta kochi

Pitta brachyura nympha

Atrichornithidae

Atrichornis clamosus

Hirundinidae

Pseudochelidon sirintarae

Muscicapidae

Dasyornis broadbenti littoralis p.e.

Dasyornis longirostris

Niltava ruecki =345

Picathartes spp.

Psophodes nigrogularis

Zosteropidae

Zosterops albogularis

Meliphagidae

Meliphaga cassidix

Fringillidae

Carduelis cucullatus =346

Carduelis yarrellii =346

Estrildidae

Emblema oculata

Poephila cincta cincta

Sturnidae

Leucopsar rothschildi

Paradisaeidae

Paradisaeidae spp.

Appendices - Apéndices - Annexes

I

II

REPTILIA

TESTUDINATA

Dermatemydidae

Dermatemys mawii

Emydidae

Batagur baska

Clemmys muhlenbergi

Geoclemys hamiltonii

Kachuga tecta tecta

Melanochelys tricarinata =347

Morenia ocellata

Terrapene coahuila

Testudinidae

Testudinidae spp. *

Geochelone elephantopus =348

Geochelone radiata =348

Geochelone yniphora =348

Gopherus flavomarginatus

Psammobates geometricus =348

Cheloniidae

Cheloniidae spp.

Dermochelyidae

Dermochelys coriacea

Trionychidae

Lissemys punctata punctata

Trionyx ater

Trionyx gangeticus

Trionyx hurum

Trionyx nigricans

Pelomedusidae

Erymnochelys madagascariensis =349

Peltocephalus dumeriliana =349

Podocnemis spp.

Appendices - Apéndices - Annexes

I

II

Chelidae

Pseudemydura umbrina

CROCODYLIA

CROCODYLIA spp. * =350

Alligatoridae

Alligator sinensis
Caiman crocodilus apaporiensis
Caiman latirostris
Melanosuchus niger

Crocodylidae

Crocodylus acutus
Crocodylus cataphractus
Crocodylus intermedius
Crocodylus moreletii
Crocodylus niloticus ** -110
Crocodylus novaeguineae mindorensis
Crocodylus palustris
Crocodylus porosus ** -111
Crocodylus rhombifer
Crocodylus siamensis
Osteolaemus tetraspis
Tomistoma schlegelii

Gavialidae

Gavialis gangeticus

RHYNCHOCEPHALIA

Sphenodontidae

Sphenodon punctatus

SAURIA

Gekkonidae

Cyrtodactylus serpensinsula
Phelsuma spp.

Appendices - Apéndices - Annexes

I

II

Pygopodidae

Agamidae

Chamaeleonidae

Iguanidae

Cordylidae

Teiidae

Helodermatidae

Varanidae

Brachylophus spp.

Cyclura spp.

Sauromalus varius

Varanus bengalensis

Varanus flavescens

Varanus griseus

Varanus komodoensis

Paradelma orientalis

Uromastyx spp.

Bradypodion spp. =351

Chamaeleo spp.

Amblyrhynchus cristatus

Conolophus spp.

Iguana spp.

Phrynosoma coronatum blainvillei

Cordylus spp.

Pseudocordylus spp.

Cnemidophorus hyperythrus

Crocodilurus lacertinus

Dracaena guianensis

Tupinambis spp.

Heloderma spp.

Varanus spp. *

Appendices - Apéndices - Annexes

I

II

SERPENTES

Boidae

Boidae spp. *

Acrantophis spp.
Bolyeria multocarinata
Casarea dussumieri
Epicrates inornatus
Epicrates monensis
Epicrates subflavus
Python molurus molurus
Sanzinia madagascariensis

Colubridae

Clelia clelia =352
Cyclagras gigas =353
Elachistodon westermanni
Thamnophis couchi hammondi =354

Elapidae

Hoplocephalus bungaroides

Appendices - Apéndices - Annexes

I

II

AMPHIBIA

CAUDATA

Ambystomidae

Ambystoma dumerilii
Ambystoma lermaense
Ambystoma mexicanum

Cryptobranchidae

Andrias spp. =355

ANURA

Bufonidae

Atelopus varius zeteki

Bufo retiformis

Bufo superciliaris
Nectophrynoides spp.

Myobatrachidae

Rheobatrachus spp.

Ranidae

Rana hexadactyla
Rana tigerina

Appendices - Apéndices - Annexes

I

II

PISCES

CERATODIFORMES

Ceratodidae

Neoceratodus forsteri

COELACANTHIFORMES

Coelacanthidae

Latimeria chalumnae

ACIPENSERIFORMES

Acipenseridae

Acipenser brevirostrum

Acipenser oxyrhynchus

Acipenser sturio

OSTEOGLOSSIFORMES

Osteoglossidae

Scleropages formosus

Arapaima gigas

SALMONIFORMES

Salmonidae

Salmo chrysogaster

Stenodus leucichthys leucichthys

Appendices - Apéndices - Annexes

I

II

CYPRINIFORMES

Cyprinidae

Probarbus jullieni

Caecobarbus geertsi

Plagopterus argentissimus

Ptychocheilus lucius

Catostomidae

Chasmistes cujus

SILURIFORMES

Schilbeidae

Pangasianodon gigas

ATHERINIFORMES

Cyprinodontidae

Cynolebias constanciae

Cynolebias marmoratus

Cynolebias minimus

Cynolebias opalescens

Cynolebias splendens

Poeciliidae

Xiphophorus couchianus

PERCIFORMES

Sciaenidae

Cynoscion macdonaldi

Appendices - Apéndices - Annexes

I

II

INSECTA

LEPIDOPTERA

Papilionidae

Ornithoptera spp. =356

Parnassius apollo

Trogonoptera spp. =356

Troides spp. =356

ARACHNIDA

ARANEAE

Theraphosidae

Brachypelma smithi

Appendices - Apéndices - Annexes

I

II

MOLLUSCA

MYTILOIDA

Mytilidae

Choromytilus chorus =357

VENEROIDA

Tridacnidae

Tridacnidae spp.

UNIONOIDA

Unionidae

Conradilla caelata

Cyprogenia aberti

Dromus dromas

Epioblasma curtisi =358

Epioblasma florentina =358

Epioblasma sampsoni =358

Epioblasma sulcata perobliqua =358

Epioblasma torulosa gubernaculum =358

Epioblasma torulosa rangiana =358

Epioblasma torulosa torulosa =358

Epioblasma turgidula =358

Epioblasma walkeri =358

Fusconaia cuneolus

Fusconaia edgariana

Fusconaia subrotunda

Lampsilis brevicula

Lampsilis higginsi

Lampsilis orbiculata orbiculata

Lampsilis satura

Lampsilis virescens

Appendices - Apéndices - Annexes

I

II

Unionidae (cont.)

Plethobasus cicatricosus
Plethobasus cooperianus

Pleurobema plenum
Potamilus capax =359
Quadrula intermedia
Quadrula sparsa
Toxolasma cylindrella =360
Unio nickliniana
Unio tampicoensis tecomatensis
Villosa trabalis =361

Lexingtonia dolabelloides

Pleurobema clava

STYLOMMATOPHORA

Camaenidae

Paryphantidae

MESOGASTROPODA

Hydrobiidae

Papustyla pulcherrima =362

Paryphanta spp. +211

Coahuilix hubbsi
Cochliopina milleri
Durangonella coahuilae
Mexipyrigus carranzae
Mexipyrigus churinceanus
Mexipyrigus escobeda
Mexipyrigus lugo
Mexipyrigus mojarralis
Mexipyrigus multilineatus
Mexithauma quadripaludium
Nymphophilus minckleyi
Paludiscala caramba

Appendices - Apéndices - Annexes

I

II

ANTHOZOA

ANTIPATHARIA

ANTIPATHARIA spp.

SCLERACTINIA

Pocilloporidae

Seriatopora spp.

Pocillopora spp.

Stylophora spp.

Acroporidae

Acropora spp.

Agaricidae

Pavona spp.

Fungiidae

Fungia spp.

Halomitra spp.

Polyphyllia spp.

Faviidae

Favia spp.

Platygyra spp.

Merulinidae

Merulina spp.

Mussidae

Lobophyllia spp.

Pectiniidae

Pectinia spp.

Caryophylliidae

Euphyllia spp.

Appendices - Apéndices - Annexes

I

II

HYDROZOA

ATHECATA

Milleporidae

Millepora spp.

ALCYONARIA

COENOTHECALIA

Helioporidae

Heliopora spp.

STOLONIFERA

Tubiporidae

Tubipora spp.

Appendices - Apéndices - Annexes

I

II

FLORA

AGAVACEAE

Agave arizonica
Agave parviflora

Nolina interrata

Agave victoriae-reginae #1

APOCYNACEAE

Pachypodium namaquanum

Pachypodium spp. * #1

ARACEAE

Alocasia sanderana
Alocasia zebrina

ARALIACEAE

Panax quinquefolius #2

ARAUCARIACEAE

Araucaria araucana ** +212

Araucaria araucana * -112 #1

ASCLEPIADACEAE

Ceropegia spp. #1
Frerea indica #1

BYBLIDACEAE

Byblis spp. #1

CACTACEAE

Ancistrocactus tobuschii
Ariocarpus agavioides
Ariocarpus scapharostus
Ariocarpus trigonus

CACTACEAE spp. * +213 #3

Appendices - Apéndices - Annexes

I

II

CACTACEAE (cont.)

Aztekium ritteri
Backebergia militaris
Coryphantha minima =363
Coryphantha sneedii =363
Coryphantha werdermannii
Echinocereus lindsayi
Echinomastus erectocentrus =364
Echinomastus mariposensis =364
Leuchtenbergia principis
Lobeira macdougallii =365
Mammillaria pectinifera =366
Mammillaria plumosa
Mammillaria solisioides
Obregonia denegrii
Pediocactus bradyi
Pediocactus despainii
Pediocactus knowltonii
Pediocactus papyracanthus
Pediocactus paradinei
Pediocactus peeblesianus
Pediocactus sileri
Pediocactus winkleri
Pelecyphora spp.

Rhipsalis spp. #4

Sclerocactus glaucus
Sclerocactus mesae-verdae
Sclerocactus pubispinus
Sclerocactus wrightiae
Strombocactus disciformis
Turbinicarpus spp.
Wilcoxia schmollii

CARYOCARACEAE

Caryocar costaricense

Appendices - Apéndices - Annexes

I

II

CEPHALOTACEAE

Cephalotus follicularis #1

COMPOSITAE

Saussurea lappa

CRASSULACEAE

Dudleya stolonifera
Dudleya traskiae

CUPRESSACEAE

Fitz-Roya cupressoides ** -113
Pilgerodendron uviferum

Fitz-Roya cupressoides * +214 #1

CYATHEACEAE

CYATHEACEAE spp. #1

CYCADACEAE

CYCADACEAE spp. #5

DIAPENSIACEAE

Shortia galacifolia #1

DICKSONIACEAE

DICKSONIACEAE spp. #1

DIDIEREACEAE

DIDIEREACEAE spp. #1

DIOSCOREACEAE

Dioscorea deltoidea #1

ERICACEAE

Kalmia cuneata #1

Appendices - Apéndices - Annexes

I

II

EUPHORBIACEAE

Euphorbia spp. -114 ≠1

FAGACEAE

Quercus copeyensis ≠1

FOUQUIERIACEAE

Fouquieria fasciculata
Fouquieria purpusii

Fouquieria columnaris ≠1

GENTIANACEAE

Prepusa hookeriana

HUMIRIACEAE

Vantanea barbourii

JUGLANDACEAE

Engelhardtia pterocarpa

LEGUMINOSAE

Cynometra hemitomophylla
Platymiscium pleiostachyum
Tachigalia versicolor

LILIACEAE

Aloe albida
Aloe pillansii
Aloe polyphylla
Aloe thorncroftii
Aloe vossii

Aloe spp. * ≠6

MELASTOMATACEAE

Lavoisiera itambana

Appendices - Apéndices - Annexes

I

II

MELIACEAE

Guarea longipetiola

Swietenia humilis #1

MORACEAE

Batocarpus costaricensis

NEPENTHACEAE

Nepenthes rajah

ORCHIDACEAE

ORCHIDACEAE spp. * =367 #7

Cattleya skinneri
Cattleya trianae
Didiciea cunninghamii
Laelia jongheana
Laelia lobata
Lycaste virginalis var. alba =368
Peristeria elata
Renanthera imschootiana
Vanda coerulea

PALMAE

Areca ipot #1
Chrysalidocarpus decipiens #1
Chrysalidocarpus lutescens #1
Neodypsis decaryi #1
Phoenix hanceana var.
philippinensis #1
Salacca clemensiana #1

PINACEAE

Abies guatemalensis

Appendices - Apéndices - Annexes

I

II

WELWITSCHIACEAE

Welwitschia bainesii =371

ZAMIACEAE

Ceratozamia spp.
Encephalartos spp.
Microcycas calocoma

ZAMIACEAE spp. * 75

ZINGIBERACEAE

Hedychium philippinense

ZYGOPHYLLACEAE

Guaiacum sanctum 71

Appendices - Apéndices - Annexes

I

II

PODOCARPACEAE

Podocarpus costalis
Podocarpus parlatorei

PORTULACACEAE

Anacampseros spp. #1
Lewisia cotyledon #1
Lewisia maguirei #1
Lewisia serrata #1
Lewisia tweedyi #1

PRIMULACEAE

Cyclamen spp. #1

PROTEACEAE

Orothamnus zeyheri
Protea odorata

RUBIACEAE

Balmea stormae

SARRACENIACEAE

Sarracenia alabamensis alabamensis
Sarracenia jonesii
Sarracenia oreophila

Darlingtonia californica #1

STANGERIACEAE

Stangeria eriopus =369

STERCULIACEAE

Pterygota excelsa =370 #1

THEACEAE

Camellia chrysantha #1

CONVENTION ON INTERNATIONAL TRADE IN ENDANGERED SPECIES
OF WILD FAUNA AND FLORA

APPENDIX III

as of 5 March 1986

INTERPRETATION

1. References to taxa higher than species are for the purpose of information or classification only.
2. Two asterisks (**) placed against the name of a species indicate that one subspecies is included in Appendix II and that this subspecies is excluded from Appendix III.
3. The symbol (=) followed by a number placed against the name of a species denotes that the name of that species shall be interpreted as follows:

- =372 Includes synonym Tamandua mexicana
- =373 Includes synonym Cabassous gymnurus
- =374 Includes synonym Manis longicaudata
- =375 Includes generic synonym Coendou
- =376 Includes synonym Galictis allamandi
- =377 Includes generic synonym Viverra
- =378 Also referenced as Tragelaphus eurycerus;
includes generic synonym Taurotragus
- =379 Also referenced as Ardeola ibis
- =380 Also referenced as Egretta alba
- =381 Also referenced as Spatula clypeata
- =382 Also referenced as Nyroca nyroca
- =383 Includes synonym Dendrocygna fulva
- =384 Also referenced as Cairina hartlaubii
- =385 Also referenced as Turturoena iriditorques or
Columba malherbii (in part)
- =386 Also referenced as Treron australis (in part)
- =387 Also referenced as Calopelia brehmeri;
includes synonym Calopelia puella
- =388 Also referenced as Tympanistria tympanistria
- =389 Also referenced as Columba mayeri
- =390 Also referenced as Terpsiphone bourbonensis
- =391 Includes synonym Bubalornis niger
- =392 Also referenced as Euplectes afra
- =393 Also referenced as Coliuspasser ardens
- =394 Also referenced as Coliuspasser macrourus
- =395 Includes synonym Euplectes franciscanus
- =396 Also referenced as Anaplectes melanotis
- =397 Includes synonyms Passer diffusus, Passer gongonensis,
Passer suahelicus and Passer swainsonii
- =398 Includes synonym Ploceus nigriceps
- =399 Includes synonym Ploceus atrogularis
- =400 Also referenced as Sitagra luteola

- =401 Also referenced as Sitagra melanocephala
- =402 Includes synonyms Ploceus katangae, Ploceus reichardi,
Ploceus ruweti and Ploceus vitellinus
- =403 Also referenced as Hypochoera chalybeata;
includes synonyms Vidua amauropteryx, Vidua centralis,
Vidua neumanni, Vidua okavangoensis and Vidua ultramarina
- =404 Includes synonym Vidua orientalis
- =405 Also referenced as Estrilda subflava or Sporaeginthus subflavus
- =406 Also referenced as Estrilda larvata;
includes synonym Lagonosticta vinacea
- =407 Includes generic synonym Spermestes
- =408 Also referenced as Euodice cantans
- =409 Also referenced as Hypargos nitidulus
- =410 Includes synonym Parmoptila rubrifrons
- =411 Includes synonyms Pyrenestes frommi and Pyrenestes rothschildi
- =412 Also referenced as Estrilda bengala
- =413 Also referenced as Pelusios subniger
- =414 Formerly included in genus Natrix

4. The name of the countries placed against the names of species are those of the Parties submitting these species for inclusion in this appendix.
5. Any animal or plant, whether live or dead, of a species listed in this appendix, is covered by the provisions of the Convention, as is any readily recognizable part or derivative thereof, except plant seeds, spores, and tissue cultures (Resolution Conf. 4.24).

F A U N A

MAMMALIA

CHIROPTERA

Phyllostomidae Vampyrops lineatus Uruguay

EDENTATA

Myrmecophagidae Tamandua tetradactyla ** =372 Guatemala

Choloepidae Choloepus hoffmanni Costa Rica

Dasypodidae Cabassous centralis Costa Rica
Cabassous tatouay =373 Uruguay

PHOLIDOTA

Manidae Manis gigantea Ghana
Manis tetradactyla =374 Ghana
Manis tricuspis Ghana

RODENTIA

Sciuridae Epixerus ebii Ghana
Sciurus deppei Costa Rica

Anomaluridae Anomalurus beecrofti Ghana
Anomalurus derbianus Ghana
Anomalurus peli Ghana
Idiurus macrotis Ghana

Hystriidae Hystrix cristata Ghana

Erethizontidae Sphiggurus spinosus =375 Uruguay

CARNIVORA

Procyonidae Bassaricyon gabbi Costa Rica
Bassariscus sumichrasti Costa Rica
Nasua nasua solitaria Uruguay

Mustelidae Galictis vittata =376 Costa Rica
Mellivora capensis Ghana,
Botswana

Viverridae Civettictis civetta =377 Botswana

Protelidae Proteles cristatus Botswana

PINNIPEDIA

Odobenidae Odobenus rosmarus Canada

ARTIODACTYLA

Tayassuidae Tayassu tajacu Guatemala

Hippopotamidae Hippopotamus amphibius Ghana

Tragulidae Hyemoschus aquaticus Ghana

Cervidae Cervus elaphus barbarus Tunisia
Mazama americana cerasina Guatemala
Odocoileus virginianus mayensis Guatemala

Bovidae Antilope cervicapra Nepal
Boocercus eurycerus =378 Ghana
Bubalus bubalis Nepal
Damaliscus lunatus Ghana
Gazella cuvieri Tunisia
Gazella dorcas Tunisia
Gazella leptoceros Tunisia
Tetracerus quadricornis Nepal
Tragelaphus spekei Ghana

AVES

RHEIFORMES

Rheidae Rhea americana ** Uruguay

CICONIIFORMES

Ardeidae Ardea goliath Ghana
Bubulcus ibis =379 Ghana
Casmerodius albus =380 Ghana
Egretta garzetta Ghana

Ciconiidae Ephippiorhynchus senegalensis Ghana
Leptoptilos crumeniferus Ghana

Threskiornithidae Hagedashia hagedash Ghana
Lampribus rara Ghana
Threskiornis aethiopicus Ghana

ANSERIFORMES

Anatidae Alopochen aegyptiacus Ghana
Anas acuta Ghana
Anas capensis Ghana
Anas clypeata =381 Ghana

	<u>Anas crecca</u>	Ghana
	<u>Anas penelope</u>	Ghana
	<u>Anas querquedula</u>	Ghana
	<u>Aythya nyroca</u> =382	Ghana
	<u>Dendrocygna bicolor</u> =383	Ghana
	<u>Dendrocygna viduata</u>	Ghana
	<u>Nettapus auritus</u>	Ghana
	<u>Plectropterus gambensis</u>	Ghana
	<u>Pteronetta hartlaubii</u> =384	Ghana
GALLIFORMES		
Cracidae	<u>Crax rubra</u>	Costa Rica, Guatemala
	<u>Ortalis vetula</u>	Guatemala
	<u>Penelopina nigra</u>	Guatemala
Phasianidae	<u>Agelastes meleagrides</u>	Ghana
	<u>Agriocharis ocellata</u>	Guatemala
	<u>Tragopan satyra</u>	Nepal
CHARADRIIFORMES		
Burhinidae	<u>Burhinus bistriatus</u>	Guatemala
COLUMBIFORMES		
Columbidae	<u>Columba guinea</u>	Ghana
	<u>Columba iriditorques</u> =385	Ghana
	<u>Columba livia</u>	Ghana
	<u>Columba unicincta</u>	Ghana
	<u>Oena capensis</u>	Ghana
	<u>Streptopelia decipiens</u>	Ghana
	<u>Streptopelia roseogrisea</u>	Ghana
	<u>Streptopelia semitorquata</u>	Ghana
	<u>Streptopelia senegalensis</u>	Ghana
	<u>Streptopelia turtur</u>	Ghana
	<u>Streptopelia vinacea</u>	Ghana
	<u>Treron calva</u> =386	Ghana
	<u>Treron waalia</u>	Ghana
	<u>Turtur abyssinicus</u>	Ghana
	<u>Turtur afer</u>	Ghana
	<u>Turtur brehmeri</u> =387	Ghana
	<u>Turtur tympanistris</u> =388	Ghana
	<u>Nesoenas mayeri</u> =389	Mauritius
PSITTACIFORMES		
Psittacidae	<u>Psittacula krameri</u>	Ghana

CUCULIFORMES

Musophagidae	<u>Corythaeola cristata</u>	Ghana
	<u>Crinifer piscator</u>	Ghana
	<u>Musophaga violacea</u>	Ghana
	<u>Tauraco macrorhynchus</u>	Ghana

PICIFORMES

Ramphastidae	<u>Ramphastos sulfuratus</u>	Guatemala
--------------	------------------------------	-----------

PASSERIFORMES

Muscicapidae	<u>Bebrornis rodericanus</u>	Mauritius
	<u>Tchitrea bourbonnensis</u> =390	Mauritius
Emberizidae	<u>Gubernatrix cristata</u>	Uruguay
Icteridae	<u>Xanthopsar flavus</u>	Uruguay
Fringillidae	<u>Serinus gularis</u>	Ghana
	<u>Serinus leucopygius</u>	Ghana
	<u>Serinus mozambicus</u>	Ghana
Ploceidae	<u>Amblyospiza albifrons</u>	Ghana
	<u>Anomalospiza imberbis</u>	Ghana
	<u>Bubalornis albirostris</u> =391	Ghana
	<u>Euplectes afer</u> =392	Ghana
	<u>Euplectes ardens</u> =393	Ghana
	<u>Euplectes hordeaceus</u>	Ghana
	<u>Euplectes macrourus</u> =394	Ghana
	<u>Euplectes orix</u> =395	Ghana
	<u>Malimbus cassini</u>	Ghana
	<u>Malimbus malimbicus</u>	Ghana
	<u>Malimbus nitens</u>	Ghana
	<u>Malimbus rubriceps</u> =396	Ghana
	<u>Malimbus rubricollis</u>	Ghana
	<u>Malimbus scutatus</u>	Ghana
	<u>Passer griseus</u> =397	Ghana
	<u>Petronia dentata</u>	Ghana
	<u>Plocepasser superciliosus</u>	Ghana
	<u>Ploceus albinucha</u>	Ghana
	<u>Ploceus aurantius</u>	Ghana
	<u>Ploceus cucullatus</u> =398	Ghana
	<u>Ploceus heuglini</u> =399	Ghana
	<u>Ploceus luteolus</u> =400	Ghana
	<u>Ploceus melanocephalus</u> =401	Ghana
	<u>Ploceus nigerrimus</u>	Ghana
	<u>Ploceus nigricollis</u>	Ghana
	<u>Ploceus pelzelni</u>	Ghana
	<u>Ploceus preussi</u>	Ghana
	<u>Ploceus superciliosus</u>	Ghana
	<u>Ploceus tricolor</u>	Ghana
	<u>Ploceus velatus</u> =402	Ghana
	<u>Quelea erythrops</u>	Ghana
	<u>Sporopipes frontalis</u>	Ghana

	<u>Vidua chalybeata</u> =403	Ghana
	<u>Vidua interjecta</u>	Ghana
	<u>Vidua larvaticolis</u>	Ghana
	<u>Vidua macroura</u>	Ghana
	<u>Vidua paradisaea</u> =404	Ghana
	<u>Vidua raricola</u>	Ghana
	<u>Vidua togoensis</u>	Ghana
	<u>Vidua wilsoni</u>	Ghana
Estrildidae		
	<u>Amadina fasciata</u>	Ghana
	<u>Amandava subflava</u> =405	Ghana
	<u>Estrilda astrild</u>	Ghana
	<u>Estrilda caerulescens</u>	Ghana
	<u>Estrilda melpoda</u>	Ghana
	<u>Estrilda troglodytes</u>	Ghana
	<u>Lagonosticta larvata</u> =406	Ghana
	<u>Lagonosticta rara</u>	Ghana
	<u>Lagonosticta rubricata</u>	Ghana
	<u>Lagonosticta rufopicta</u>	Ghana
	<u>Lagonosticta senegala</u>	Ghana
	<u>Lonchura bicolor</u> =407	Ghana
	<u>Lonchura cucullata</u> =407	Ghana
	<u>Lonchura fringilloides</u> =407	Ghana
	<u>Lonchura malabarica</u> =408	Ghana
	<u>Mandingoa nitidula</u> =409	Ghana
	<u>Nesocharis capistrata</u>	Ghana
	<u>Nigrita bicolor</u>	Ghana
	<u>Nigrita canicapilla</u>	Ghana
	<u>Nigrita fusconota</u>	Ghana
	<u>Nigrita luteifrons</u>	Ghana
	<u>Ortygospiza atricollis</u>	Ghana
	<u>Parmoptila woodhousei</u> =410	Ghana
	<u>Pholidornis rushiae</u>	Ghana
	<u>Pyrenestes ostrinus</u> =411	Ghana
	<u>Pytilia hypogrammica</u>	Ghana
	<u>Pytilia phoenicoptera</u>	Ghana
	<u>Spermophaga haematina</u>	Ghana
	<u>Uraeginthus bengalus</u> =412	Ghana

REPTILIA

TESTUDINATA

Trionychidae

Trionyx triunguis

Ghana

Pelomedusidae

Pelomedusa subrufa

Ghana

Pelusios adansonii

Ghana

Pelusios castaneus

Ghana

Pelusios gabonensis =413

Ghana

Pelusios niger

Ghana

SERPENTES

Colubridae	<u>Atretium schistosum</u>	India
	<u>Cerbutus rhynchops</u>	India
	<u>Ptyas mucosus</u>	India
	<u>Xenochrophis piscator</u> =414	India
Elapidae	<u>Naja naja</u>	India
	<u>Ophiophagus hannah</u>	India
Viperidae	<u>Vipera russellii</u>	India

F L O R A

GNETACEAE	<u>Gnetum montanum</u>	Nepal
MAGNOLIACEAE	<u>Talauma hodgsonii</u>	Nepal
PAPAVERACEAE	<u>Meconopsis regia</u>	Nepal
PODOCARPACEAE	<u>Podocarpus nerifolius</u>	Nepal
TETRACENTRACEAE	<u>Tetracentron sinense</u>	Nepal

