

CONVENTION ON INTERNATIONAL TRADE IN ENDANGERED SPECIES
OF WILD FAUNA AND FLORA



Sixty-fifth meeting of the Standing Committee
Geneva (Switzerland), 7-11 July 2014

Strategic matters

Cooperation with other organizations

INTERGOVERNMENTAL SCIENCE-POLICY PLATFORM ON
BIODIVERSITY AND ECOSYSTEM SERVICES: REPORT OF THE WORKING GROUP

1. This document has been submitted by the Chair of the Standing Committee Working Group on the *Intergovernmental Science-Policy Platform on Biodiversity and Ecosystem Services* (IPBES)^{*}, in consultation with the Vice-chair of the Animals Committee and the Secretariat.
2. The Standing Committee considered this matter at its 62nd meeting (SC62, Geneva, July 2012) in connection with document SC62 Doc. 14.5 and document SC62 Com. 6. The Committee established an intersessional working group on IPBES to take the recommendations agreed at SC62 forward for consideration at the 16th meeting of the Conference of the Parties (CoP16, Bangkok, 2013).
3. Following its discussion of document CoP16 Doc. 17 (Rev. 1), submitted by the Chair of the Standing Committee and prepared by the Chair of the Working Group on IPBES in consultation with the Secretariat, the Conference of the Parties adopted Decisions 16.13 – 16.16. It was thereafter agreed at the 64th meeting of the Standing Committee (SC64, Bangkok, 2013) that the Working Group on IPBES would be continued “with Mexico as chair, in order to initiate the implementation of the CoP16 Decisions related to this subject”.
4. More details about CITES activities related to IPBES, as well as the full text of Decisions 16.13 – 16.16, are contained in the report submitted to the joint session of the 27th meeting of the Animals Committee and the 21st meeting of the Plants Committee (AC27/PC21, Veracruz, May 2014). A copy of document AC27/PC21 Doc. 8.1, prepared by the Chair of the Standing Committee Working Group on IPBES, in collaboration with the Chairs of the Animals and Plants Committees and the Secretariat, is contained in the Annex to this document. Subsequent to that document being produced, Mr Fleming (then interim Vice-Chair of the Animals Committee) attended, on behalf of the Chairs of the Plants and Animals Committee, the 3rd meeting of the IPBES Multi-disciplinary Expert Panel (11-13 March 2014, Bonn).
5. During the joint sessions AC27/PC21 (May, 2014) document AC27/PC21 Doc. 8.1 was introduced by the Chair of the Working Group on IPBES, and on the basis of the recommendations of document, and as currently reflected in AC27/PC21 Sum. 1, the Committees noted the document and further agreed that the AC and PC Chairs incorporate information conveyed by the AC representative of Europe (Mr Fleming) into document AC27/PC21 Doc. 8.1 for reporting to the Standing Committee at its 65th meeting; see paragraphs 17 to 21 of the Annex to this document.
6. The Working Group on IPBES plans to meet in the margins of the present meeting to review Decisions 16.13 – 16.16, the relevant document for and decision taken at AC27/PC21 and any additional developments related to IPBES. On the basis of this discussion, it will prepare a set of specific recommendations for consideration by the Standing Committee at the present meeting.

^{*} *The geographical designations employed in this document do not imply the expression of any opinion whatsoever on the part of the CITES Secretariat or the United Nations Environment Programme concerning the legal status of any country, territory, or area, or concerning the delimitation of its frontiers or boundaries. The responsibility for the contents of the document rests exclusively with its author.*

Recommendation

7. The Standing Committee is invited to note the content of this document and to consider the specific recommendations made by the Chair of the Working Group on IPBES at the present meeting.

Original language: English

Edited version of AC27/PC21 Doc. 8.1

CONVENTION ON INTERNATIONAL TRADE IN ENDANGERED SPECIES
OF WILD FAUNA AND FLORA



Joint sessions of the 27th meeting of the Animals Committee and
21st meeting of the Plants Committee
Veracruz (Mexico), 2-3 May 2014

Strategic matters

INTERGOVERNMENTAL SCIENCE-POLICY PLATFORM
ON BIODIVERSITY AND ECOSYSTEM SERVICES (IPBES)
(DECISION 16.15)

1. This document has been prepared by the Chair of the Standing Committee Working Group on the *Intergovernmental Science-Policy Platform on Biodiversity and Ecosystem Services* (IPBES), in collaboration with the Chairs of Animals and Plants Committees and the Secretariat.¹

Background

2. At its 15th meeting (CoP15, Doha, 2010) the Conference of the Parties adopted Decisions 15.12 to 15.14 on IPBES, which were directed to the Animals and Plants Committees, the Secretariat and the Standing Committee, respectively.
3. At the 16th meeting of the Conference of the Parties (CoP16, Bangkok, 2013), Mexico – in its role as chair of the Standing Committee Working Group on IPBES – introduced document [CoP16 Doc. 17 \(Rev. 1\)](#) which described the activities undertaken during the intersessional period between CoP15 and CoP16, to implement the above-mentioned Decisions. On the basis of the progress achieved, the Working Group recommended that the Conference delete Decisions 15.12 – 15.14 as they had been fully implemented. It also recommended that the Conference adopt four new Decisions on IPBES (Decisions 16.13 – 16.16), which are directed to the Parties, the Standing Committee, the Animals and Plants Committees and the Secretariat, respectively. These Decisions are reproduced below:

¹ *The geographical designations employed in this document do not imply the expression of any opinion whatsoever on the part of the CITES Secretariat or the United Nations Environment Programme concerning the legal status of any country, territory, or area, or concerning the delimitation of its frontiers or boundaries. The responsibility for the contents of the document rests exclusively with its author.*

Decision	Mandate
16.13	<p><i>Directed to Parties</i></p> <p>a) Parties should consider promoting actions to reinforce linkages between IPBES and CITES and to strengthen the science-policy interface at the national and international levels, including through the governing body of IPBES, as appropriate; and</p> <p>b) Bearing in mind that IPBES consolidation remains in process, Parties are invited to provide inputs to the Secretariat in order to provide timely responses to IPBES in regard to CITES involvement.</p>
16.14	<p><i>Directed to the Standing Committee</i></p> <p>At its 64th meeting, the Standing Committee shall establish a Working Group on IPBES, including the Chairs of the Animals and Plants Committees and the Secretariat, to assist its efforts to ensure that:</p> <p>a) There is a two-way relationship between CITES and IPBES in which CITES is a user or beneficiary of IPBES as well as a contributor to IPBES;</p> <p>b) Communication between CITES and IPBES for the conveyance of government requests is effective;</p> <p>c) The development of the work programme of IPBES takes into account the needs of national scientific and management authorities to foster the use of applied science for the implementation of CITES, including the making of non-detriment and legal acquisition findings, and related trade decisions; and</p> <p>d) CITES requests and input to intersessional and regular work undertaken by IPBES are provided in accordance with relevant timelines, particularly the deadline of 5 May 2013 for request to and suggestions for the initial IPBES work programme.</p> <p>The intersessional working group shall report to the Standing Committee at its 65th and 66th meetings.</p> <p>Any inputs to IPBES developed by the intersessional working group shall, with the endorsement of the Chair of the Standing Committee after consultation with the Committee, be conveyed to IPBES by the Secretariat on behalf of the Standing Committee.</p> <p>The Standing Committee shall consider at its 66th meeting the need for drafting a resolution which specifically recognizes the relationship between CITES and IPBES.</p> <p>The Standing Committee shall report at the 17th meeting of the Conference of the Parties on the results of this work.</p>
16.15	<p><i>Directed to the Animals and Plants Committees</i></p> <p>The Chairs of the Animals and Plants Committees shall:</p> <p>a) Assist the Standing Committee with the implementation of Decision 16.14;</p> <p>b) Subject to external funds, participate as observers in the IPBES Multidisciplinary Expert Panel (MEP) and thereby reinforce linkages between the MEP and the CITES scientific committees; and</p> <p>c) Report regularly to the Standing Committee on their activities under paragraph a) above.</p>

16.16	<p><i>Directed to the Secretariat shall:</i></p> <ul style="list-style-type: none"> a) Under the policy guidance provided by the Conference of the Parties, and in cooperation with the Standing Committee's intersessional Working Group on IPBES, established pursuant to Decision 16.14, continue to track and contribute to the intersessional and regular work of IPBES bodies; b) Subject to external funds, participate as an observer in the governing body of IPBES and thereby reinforce linkages between that body and the governing bodies of CITES; c) Explore with other biodiversity-related conventions possible means for facilitating cooperation between the Liaison Group of Biodiversity-related Conventions (BLG) and the IPBES Secretariat, once the latter is established; d) Seek external funding to support attendance at IPBES meetings by the Chairs of the Animals and Plants Committees and the Secretariat; and e) Report regularly to the Standing Committee, as well as at the 17th meeting of the Conference of the Parties, on the results of this work.
-------	--

Progress achieved

Regarding Decision 16.14:

4. At its 64th meeting (SC64, Bangkok, March 2013), the Standing Committee established an intersessional Working Group on IPBES chaired by México (Mr. Hesiquio Benítez), and composed of: a) representatives from Brazil, Canada, China, Colombia, Denmark, Egypt, Ireland, Japan, Switzerland, the United Kingdom of Great Britain and Northern Ireland and the United States of America; b) the Chairs of the Animals and Plants Committees, and the Secretariat; and c) representatives from the European Commission, IUCN and WWF International.
5. In accordance with the guidance provided in Decision 16.14 d), the intersessional Working Group focused on developing a CITES request to IPBES on scientific and technical matters that required the Platform's attention. The final version of this request was submitted by the Secretariat, on behalf of the Working Group, on 5 May 2013 (see <http://www.ipbes.net/images/CITES-submission.pdf>).

Considering the great variety of wild species subject to commercial harvest and trade worldwide – particularly the more than 35,000 species of animals and plants listed in the CITES Appendices – CITES called for IPBES' assistance in strengthening the capacity of national CITES authorities to make non-detriment findings (as well as legal acquisition findings and related trade decisions) under the Convention, suggesting as a starting point the following thematic group approach for Appendix-II listed species:

- a) Timber, including precious wood species;
- b) Non-timber plants, including medicinal ones;
- c) Commercially harvested marine species, including shark species; or,
- d) Terrestrial vertebrates, including Asian snake species.

Regarding Decision 16.15:

6. With support from external funds available to the United Nations Environment Programme, the interim Chair of the Animals Committee (Mrs. Carolina Cáceres) participated as an observer in the 1st meeting of the IPBES Multidisciplinary Expert Panel (MEP) (Bergen (Norway), 1-6 June 2013)². A key issue of interest discussed during this inaugural meeting was the MEP's approach towards the development of the IPBES draft work programme (IPBES/MEP-1/3). The MEP focused on integrating all requests and inputs received from governments and other stakeholders (including the CITES request). After discussion, the MEP organized the inputs they had received into thematic topics or "bundles" of potential deliverables which took an integrated approach to IPBES functions and facilitated synergy and complementarity with other

² The notes from the 1st meeting of the IPBES Bureau and MEP are available at: <http://www.ipbes.net/images/1st%20Bureau%20and%20MEP%20meetings%20June%202013%20Bergen%20-%20Meeting%20report.pdf>

processes. The MEP agreed that these bundles would be prioritized through an intersessional process and further discussion at MEP-2 for later presentation to the second meeting of the IPBES Plenary planned for December 2013. With regard to the draft process for scoping potential assessments and other deliverables of the Platform (IPBES/MEP-1/5), the MEP agreed to do some test scoping (considering financial issues) of priority activities as determined in the work programme.

7. With support from external funds available to the United Nations Environment Programme, the Vice Chair of the Plants Committee (Mr. Hesiquio Benítez) participated as an observer in the 2nd full meeting of the IPBES MEP and Bureau (Cape Town, (South Africa, 27-31 August 2013). Based on the proposed draft IPBES work programme 2014-2018 (IPBES/MEP-2/2), three kinds of main deliverables and specific issues were considered by MEP-2:
 - a) Tools:
 - 1) Valuation of biodiversity
 - 2) Modeling
 - b) Fast track assessments:
 - 1) Pollination and food security
 - 2) Invasive species: impacts on biodiversity, ecosystem services and tools for control
 - c) Full assessments:
 - 1) Degradation and restoration of terrestrial and freshwater systems
 - 2) Agriculture, food security and biodiversity
 - 3) The impacts of harvest and exploitation on the conservation status of wild populations
 - 4) Migratory species: economics, connectivity, marine systems, climate change, and indigenous and local knowledge

The CITES request to IPBES was not included in the draft IPBES work programme as originally drafted and was instead shortened and placed under the priority 2 category of “Assessment of impact of harvesting and exploitation on wildlife species”. In this process, the element of sustainable use was deleted as well as the previous emphasis on capacity building and the development of policy support tools. However, following a suggestion by the Vice-Chair of the Plant Committee, IPBES MEP/Bureau-2 agreed that, in order to provide better guidance for discussions during the 2nd meeting of the IPBES Plenary (IPBES-2; Antalya (Turkey), 9-14 December 2013), all proposed deliverables (regardless of their priority) would be accompanied by a scoping document drafted by one or more MEP members and submitted by 30 September 2013. The proposed deliverable on ‘Sustainable use of wild species’ was assigned to MEP member Julia Carabias Lillo (Latin American and Caribbean States). Her final version of the associated scoping proposal captured the essence of the original CITES request, while explaining it in more user-friendly language and including closely-related notions such as indigenous and local knowledge (see <http://www.ipbes.net/images/K1353334-en.pdf>).

8. With support from external funds provided to the Secretariat by the European Union, the Chair of the Plants Committee and the Secretariat participated as observers in IPBES-2. In addition to expressing formal and informal support for inclusion of the proposed assessment deliverable on “Sustainable use of wild species” in the IPBES work programme, they tracked CITES-relevant discussions in contact groups established during the meeting and worked closely with the representatives of other convention secretariats and chairs of scientific advisory bodies to reinforce linkages between IPBES and convention bodies. In particular, they contributed to the drafting of a joint statement made by participating conventions at the end of the meeting.

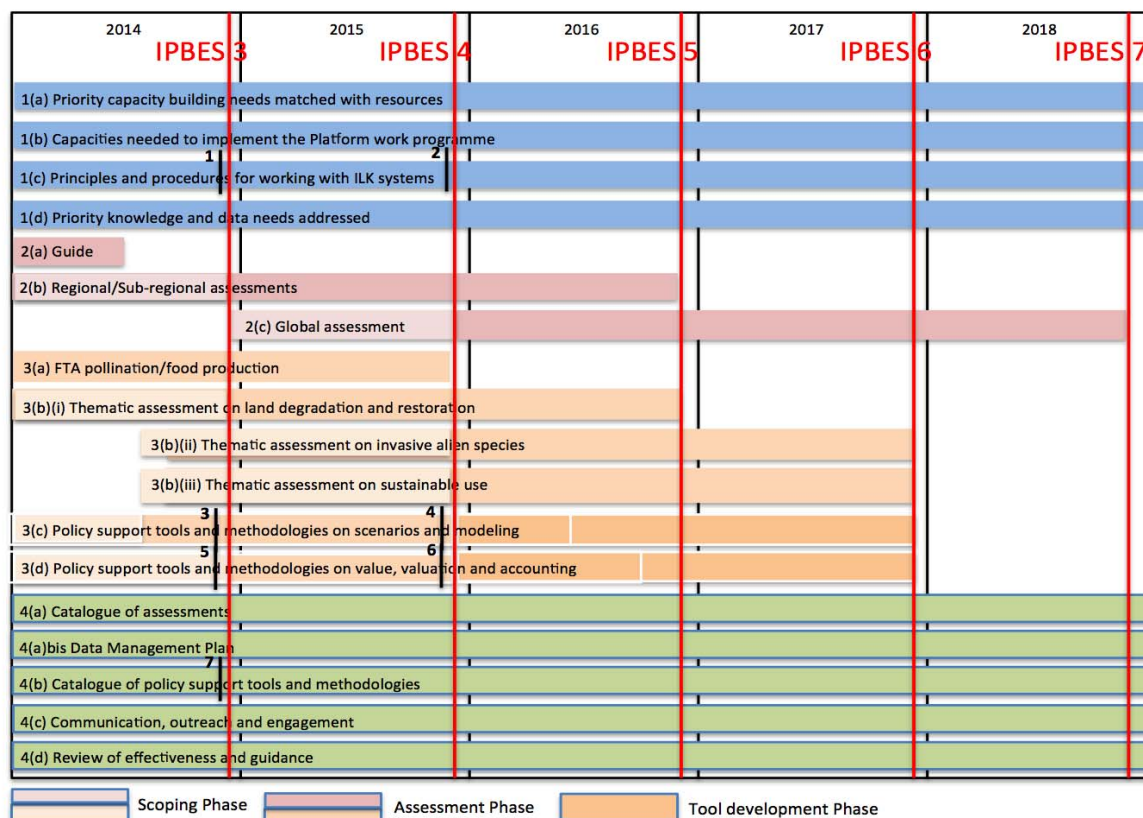
The statement made by the Secretariat on 10 December 2013 can be found here: http://cites.org/eng/news/sundry/2013/20131212_ipbes2.php. The joint convention statement is attached as an Annex to this document.

The advance report and decisions of IPBES-2 are available at <http://www.ipbes.net/images/IPBES-2-17%20%20%20-%20%20Advance%20En.pdf>

Key outcomes of IPBES-2 included adoption of the following:

- IPBES work programme 2014-2018 containing, among other things, an assessment on “Sustainable use of wild species” (see complete Schedule for delivery of the work programme in Figure 1 below);
- Financial and budgetary arrangements;
- Collaborative partnership arrangement with UNEP, UNESCO, FAO and UNDP;
- A conceptual framework for the Platform;
- Procedures for the preparation of the Platform’s deliverables;
- Terms of reference for task forces on capacity building, knowledge and data, and indigenous and local knowledge; and
- Initial scoping of two fast-track assessments.

Figure 1. Schedule for delivery of IPBES work programme (2014-2018)



During IPBES-2, the official appointment of the head of the permanent IPBES Secretariat (to be located in Bonn, Germany) was announced. Additional appointments of Secretariat staff are expected to follow soon. As of 18 February 2014, IPBES had 117 member States. With the work programme and funding agreed at IPBES-2, and the expedited establishment of a permanent secretariat, IPBES has a good basis for initiating and progressing its anticipated deliverables.

9. It is worth noting that on 7 January 2014 the Chair of IPBES (Prof. Zakri Abdul Hamid) issued a letter requesting the Platform’s Member States and Observers (including CITES) to nominate experts for the

following task forces or expert groups by 28 February 2014 (<http://www.ipbes.net/images/Letter%20from%20IPBES%20chair%20following%20IPBES-2.pdf>):

- 1) Task force on capacity building (related to deliverables 1a and 1b);
- 2) Task force on indigenous and local knowledge system (related to deliverable 1c);
- 3) Task force on knowledge (related to deliverables 1d and 4b);
- 4) Expert group to implement work programme deliverable 2a (i.e. guide to the production and integration of assessments from across all levels);
- 5) Assessment on pollination and pollinators associated with food production (deliverable 3a);
- 6) Methodological assessment on scenario analysis and modeling of biodiversity and ecosystem services (deliverable 3c);
- 7) Scoping of a methodological assessment on the conceptualization of values of biodiversity and nature's benefits to people and development of a preliminary guide on the subject (deliverable 3d); and,
- 8) Expert group to support the IPBES MEP and Bureau and developing a catalogue of policy support tools and methodologies (deliverable 4c).

The call for nominations for experts to contribute to other work programme deliverables (including the assessment on sustainable use) will be circulated towards the end of March, with a June 2014 deadline.

Regarding Decision 16.16:

10. IPBES was one of the key agenda items for the 8th meeting of the Liaison Group of the Biodiversity-related Conventions (Bogis-Bossey (Switzerland), 2 February 2013), as reflected in the minutes of the meeting (see item 2 at <https://www.cbd.int/cooperation/doc/blg-2013-02-13-en.pdf>). Although CITES and other BLG members initially considered that a joint request might be submitted to IPBES, this was ultimately not feasible because of their differing mandates on IPBES-related activities. BLG members nevertheless shared with each other their respective submissions and liaised closely at IPBES-2. There seems to be scope for members of the Chairs of Scientific Advisory Bodies, however, to liaise more closely in future meetings of the IPBES MEP.
11. The Secretariat participated in the 7th Trondheim Conference on Biodiversity (Trondheim (Norway) 27-31 May 2013), where the Chair of IPBES gave a presentation on *Ecology and human well-being*. The role of IPBES in improving processes for the capture, management and synthesis of data, information and knowledge as an important basis for decision-making was reflected in the report of the Conference co-chairs (see page 8 at <https://www.cbd.int/sbstta/doc/trondheim-07-cochairs-report-en.pdf>).
12. The Environment Management Group is a UN system-wide coordination body. The 9th meeting of the EMG Issue Management Group on Biodiversity (IMG-Biodiversity) was held on the margins of IPBES-2 to discuss members' contributions to the Strategic Plan for Biodiversity 2011-2020 and its Aichi Targets and National Biodiversity Strategies and Action Plans (NBSAPs), as well as the integration of the Targets and NBSAPs into country-level planning tools such as the United Nations Development Assistance Framework (UNDAF). The meeting was co-chaired by the CBD and CITES Secretariats. Among other things, the IMG-Biodiversity agreed that its next meeting in 2014 might discuss how the UN system could support IPBES. A report of the meeting may be found at <http://www.unemg.org/>.

Overview of progress achieved

13. The participation of CITES in the process to operationalize IPBES was achieved through the timely submission of concrete inputs for inclusion in the IPBES work programme and through the participation of the Chairs of the Animals and Plants Committees and the Secretariat (as observers) in meetings of the IPBES MEP and Plenary, as well as other IPBES-relevant meetings. These efforts have resulted in general support being expressed during IPBES-2 for the value of developing strategic partnerships between MEAs and IPBES, and the inclusion of the assessment on sustainable use of wild species in the 2014-2018 IPBES work programme, which will contribute to the effective implementation of CITES.

Next steps and recommendations

14. The Animals and Plants Committees are invited to take note of this report and the progress achieved.
15. The Animals and Plants Committees could establish an AC/PC drafting group to develop a brief set of recommendations for consideration of the Standing Committee Working Group on IPBES on matters such as: a) CITES participation at IPBES meetings; b) the development of and nomination of experts for the assessment on sustainable use of wild species; and c) the pertinence of a draft Resolution on CITES and IPBES collaboration and any other matter relevant to the implementation of Decision 16.14.
16. As directed in Decision 16.15, the Chairs of the Animals and Plants Committees shall continue to participate as observers in the IPBES MEP and Plenary (subject to external funds), assist the Standing Committee with the implementation of Decision 16.14 and report to the 65th meeting of the Standing Committee (Geneva, 7 - 11 July 2014) on their activities.

RECOMMENDATIONS BY THE SCIENTIFIC COMMITTEES TO THE SC INTERSESSIONAL WORKING GROUP ON IPBES, AS AGREED DURING THEIR JOINT SESSIONS (AC27/PC21, Veracruz 2014):³

1. It would be important to make sure that experts with good knowledge of CITES take part in the forthcoming assessment by the IPBES sustainable use Task Force;
2. In view of the importance given to Government candidates in IPBES assessment processes, Parties nominate CITES experts for participation in the assessment;
3. When nominating experts for the assessment, the Standing Committee and Parties should seek fair regional representation, broad skills and a better gender balance;
4. For a comprehensive assessment of sustainable use, expertise in additional areas other than biology and biodiversity management will be required, such as social and economic sciences, an rural development policies;
5. The Standing Committee and Parties could consider experts who took part in the International Workshop on CITES Non-Detriment Findings (Cancún, México 2008) for nominations; and,
6. Opportunities exist for better and more regulated liaison between IPBES and CITES, and for facilitating the nomination of experts with CITES knowledge, through the AC alternate representative of Africa (Mr Fouda), who is also member of the IPBES Multidisciplinary Expert Panel for Africa.

³ From this paragraph onwards, the agreements derived from the AC27/PC21 sessions after consideration of the original document AC27/PC21 Doc. 8.1 are indicated in underlined.

2nd meeting of the IPBES Plenary

Joint Statement by the Multilateral Environmental Agreements

Secretariats of the Convention on Biological Diversity (CBD), Convention on International Trade in Endangered Species of Wild Fauna and Flora (CITES), Convention on Migratory Species (CMS), Convention on Wetlands (Ramsar) and United Nations Convention to Combat Desertification (UNCCD)

Delivered by the Chair of the Ramsar Scientific and Technical Review Panel

14 December 2013

Mr Chairman,

In my capacity as Chair of the Ramsar Convention's Scientific and Technical Review Panel, I am pleased to deliver this statement on behalf of all the MEAs participating in IPBES-2, namely the Convention on Biological Diversity (CBD), Convention on International Trade in Endangered Species of Wild Fauna and Flora (CITES), Convention on Migratory Species (CMS), Convention on Wetlands (Ramsar) and United Nations Convention to Combat Desertification (UNCCD).

The MEAs represented here in Antalya by their Secretariats and/or their Chairs of the Scientific Subsidiary Bodies welcome the adoption of the IPBES work programme for 2014 - 2018 and look forward to contributing to it and benefiting from its implementation.

We recognize that this work programme responds to the requests from the MEAs.

The MEAs expect that the thematic assessments will help countries in their efforts to achieve the Aichi Biodiversity Targets and a number of objectives established under the MEAs. For example: the thematic assessment on land degradation and restoration will contribute to Aichi Biodiversity Target 15 and efforts under the UNCCD on desertification, land degradation and drought, as well as the efforts by the Ramsar Convention to promote the wise use of wetlands. While the assessment on sustainable use will contribute to the implementation of several of the MEAs, in particular CITES and the CBD, the assessment on pollination is, among others, linked to the work of CMS.

The MEAs welcome the sub-global assessments that will not only provide the building blocks for a comprehensive global assessment, but also will be engines for capacity building, engaging national and sub-regional expertise, and broadening the pool of scientists available to participate in global assessments. We also welcome their multidisciplinary approach, drawing upon the full range of relevant social and natural science disciplines as well as indigenous and traditional knowledge.

The methodological assessments to be undertaken by IPBES are likely to be useful to the work of all MEAs.

As stated earlier in the Plenary, the MEAs are keen to further strengthen their partnership with the Platform, working with the Secretariat, Bureau, MEP and participating in task forces, as the need may be, on all four functions of the Platform: assessment; capacity building, policy support and knowledge generation.

The MEAs would like to join others in congratulating Dr. Anne Larigauderie on her appointment as the Secretary of the Platform and we look forward to working with her.

In concluding, the MEAs would also like to thank our host Turkey for its kind hospitality, and congratulate you, Mr. Chair, and the interim Secretariat, as well as the MEP, Bureau and members of the Platform on the good progress that has been made in this meeting and would like to wish the experts working on its implementation every success.

Thank you.